

Harmony21

Premium

Toon Boom Harmony21 Premium Keyboard Shortcuts Guide



TOON BOOM ANIMATION INC.
4200 St.Laurent Blvd, Suite 1020
Montreal, Quebec, Canada
H2W 2R2

+1 514 278 8666
contact@toonboom.com
toonboom.com

Legal Notices

Toon Boom Animation Inc.
4200 Saint-Laurent, Suite 1020
Montreal, Quebec, Canada
H2W 2R2

Tel: +1 514 278 8666

Fax: +1 514 278 2666

toonboom.com

Disclaimer

The content of this document is the property of Toon Boom Animation Inc. and is copyrighted. Any reproduction in whole or in part is strictly prohibited.

The content of this document is covered by a specific limited warranty and exclusions and limit of liability under the applicable License Agreement as supplemented by the special terms and conditions for Adobe®Flash® File Format (SWF). For details, refer to the License Agreement and to those special terms and conditions.

Trademarks

Toon Boom® is a registered trademark. Harmony™ and the Toon Boom logo are trademarks of Toon Boom Animation Inc. All other trademarks of the property of their respective owners.

Publication Date

07-03-2021

Copyright © 2021 Toon Boom Animation Inc., a Corus Entertainment Inc. company. All rights reserved.

Table of Contents

| | |
|--|-----------|
| Table of Contents | 2 |
| About Keyboard Shortcuts | 4 |
| Accessing the Keyboard Shortcuts Dialog | 6 |
| About Keyboard Shortcut Sets | 8 |
| Switching Between Shortcut Sets | 9 |
| Creating a Keyboard Shortcut Set | 10 |
| Deleting a Keyboard Shortcut Set | 11 |
| Exporting Keyboard Shortcuts | 12 |
| Importing Keyboard Shortcuts | 13 |
| Searching for Keyboard Shortcuts | 14 |
| Customizing Keyboard Shortcuts | 16 |
| Resetting Keyboard Shortcuts | 18 |
| Default Keyboard Shortcuts | 20 |
| General Keyboard Shortcuts | 21 |
| Camera Keyboard Shortcuts | 32 |
| Timeline Keyboard Shortcuts | 39 |
| Node View Keyboard Shortcuts | 47 |
| Exposure Sheet Keyboard Shortcuts | 50 |
| Colour Management Keyboard Shortcuts | 54 |
| Drawing Mode Keyboard Shortcuts | 55 |
| Function Editor Keyboard Shortcuts | 69 |
| Library Keyboard Shortcuts | 71 |
| Tagging Keyboard Shortcuts | 72 |
| Tool Presets Keyboard Shortcuts | 73 |
| 3D Graph Keyboard Shortcuts | 74 |
| Shift and Trace Keyboard Shortcuts | 76 |
| Deformation Keyboard Shortcuts | 77 |
| Envelope Creator Keyboard Shortcuts | 79 |
| Exposure Fill Keyboard Shortcuts | 80 |

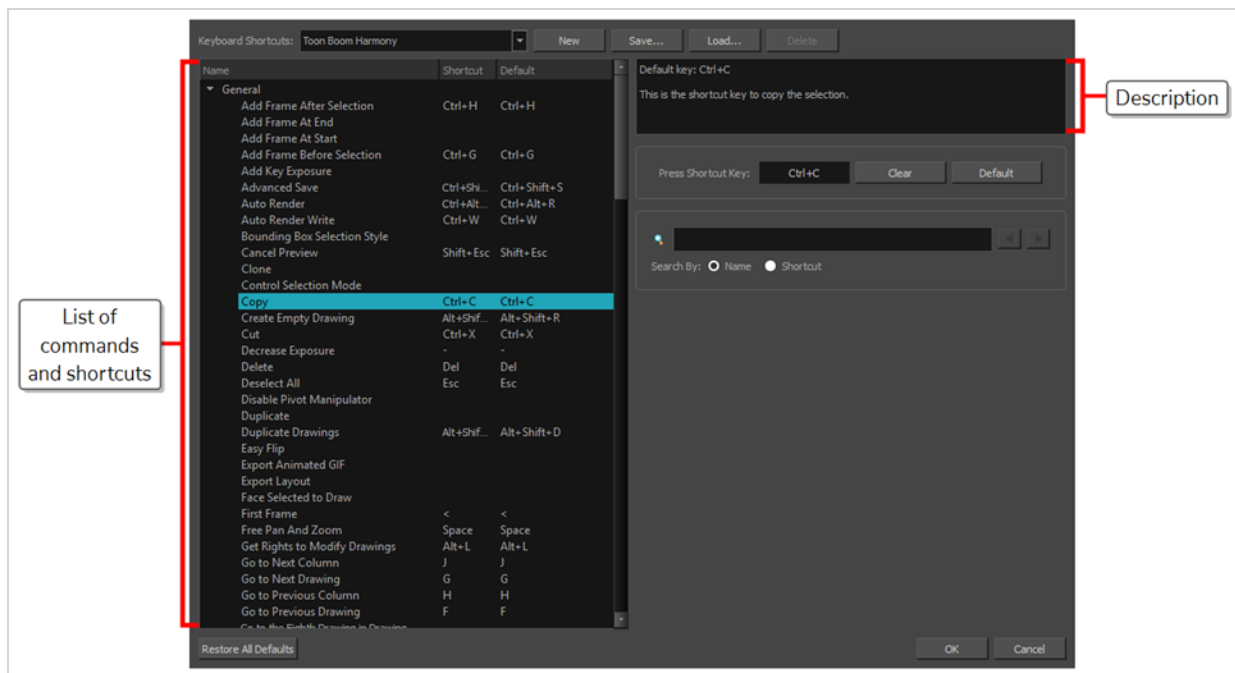
| | |
|---|----|
| Gaming Keyboard Shortcuts | 81 |
| Guides Keyboard Shortcuts | 82 |
| Animated Matte Generator Keyboard Shortcuts | 83 |
| Particle Keyboard Shortcuts | 86 |
| Timesheet Keyboard Shortcuts | 87 |
| Mini Playback Keyboard Shortcuts | 89 |
| Node Caching Keyboard Shortcuts | 90 |

About Keyboard Shortcuts

Harmony uses keyboard shortcuts to allow you to quickly use commands you are familiar with without having to browse through menus and toolbars. Learning the keyboard shortcuts for the commands you use the most often can be a great way to increase your productivity with Harmony.

Using the Keyboard Shortcuts dialog, you can:

- Check which keyboard shortcuts are assigned to which commands
- Search through commands and keyboard shortcuts
- Customize existing keyboard shortcuts
- Assign keyboard shortcuts to commands that don't have any
- Save keyboard shortcuts as presets
- Switch between keyboard shortcut presets
- Export and import keyboard shortcut configurations



Accessing the Keyboard Shortcuts Dialog

You can access the Keyboard Shortcuts dialog from the **Edit** menu on Windows and GNU/Linux, or from the **Harmony Premium** menu on macOS. The Keyboard Shortcuts menu item is just below the Preferences menu item.

How to open the Keyboard Shortcuts dialog box

1. Do one of the following:
 - **Windows or GNU/Linux:** In the top menu, select **Edit > Keyboard Shortcuts**.
 - **macOS:** In the top menu, select **Harmony Premium > Keyboard Shortcuts**.

About Keyboard Shortcut Sets

Harmony comes preloaded with different sets of keyboard shortcut configurations:

- **Toon Boom Harmony:** The default keyboard shortcuts for Harmony. When the Harmony documentation refers to a specific keyboard shortcut, it refers to the keyboard shortcuts in this preset.
- **Adobe Flash:** A preset that likens the default keyboard shortcut configuration in the Adobe Animate software.
- **Toon Boom Studio:** A preset that likens the default keyboard shortcut configuration for Toon Boom Studio, a legacy Toon Boom software.

You can quickly switch between keyboard shortcut sets in the Keyboard Shortcuts dialog. You can also create your own keyboard shortcut sets. Keyboard shortcut sets can be saved directly to your preferences, along with the shortcut presets that are preloaded in Harmony. They can also be exported as XML files and imported later or shared with other users.

Switching Between Shortcut Sets

You can instantly switch from one keyboard shortcut set to another in the Keyboard Shortcuts dialog.

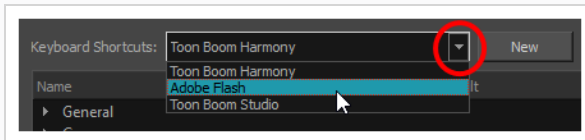


NOTE

Switching to a different keyboard shortcut set will not discard your current keyboard shortcut configuration. Your keyboard shortcut configuration is saved to the currently selected keyboard shortcut set. Hence, you can return to your old configuration simply by switching back to the previously used keyboard shortcut set.

How to switch between keyboard shortcut sets

1. Do one of the following to open the Keyboard Shortcuts dialog:
 - **Windows or GNU/Linux:** In the top menu, select **Edit > Keyboard Shortcuts**.
 - **macOS:** In the top menu, select **Harmony Premium > Keyboard Shortcuts**.
2. In the top-left corner of the Keyboard Shortcuts dialog, open the **Keyboard Shortcuts:** drop-down and select the preset you want to use.



3. Click on **OK**.

Creating a Keyboard Shortcut Set

You can create your own keyboard short cut sets and add them to the **Keyboard Shortcuts:** drop-down menu of the Keyboard Shortcuts dialog.

How to create a keyboard shortcut set

1. Do one of the following to open the Keyboard Shortcuts dialog:
 - **Windows or GNU/Linux:** In the top menu, select **Edit > Keyboard Shortcuts**.
 - **macOS:** In the top menu, select **Harmony Premium > Keyboard Shortcuts**.
2. In the list of commands and keyboard shortcuts, configure each keyboard shortcut the way you want them in your preset.
3. Near the top of the Keyboard Shortcuts dialog, click on the **New** button.
4. In the Keyboard Shortcut Set dialog, type in a name for your keyboard shortcut preset.
5. Click **OK**.

The keyboard shortcut set is now in the **Keyboard Shortcuts:** drop-down. Selecting it will load the keyboard shortcuts configuration you had when you created it.

Deleting a Keyboard Shortcut Set

You can delete a custom keyboard shortcut set from the **Keyboard Shortcuts:** drop-down in the Keyboard Shortcuts dialog.



NOTE

You can only delete custom keyboard shortcut sets that you created or imported. You cannot delete the keyboard shortcut sets that are preloaded with Harmony.

How to delete a keyboard shortcut set

1. Do one of the following to open the Keyboard Shortcuts dialog:
 - **Windows or GNU/Linux:** In the top menu, select **Edit > Keyboard Shortcuts**.
 - **macOS:** In the top menu, select **Harmony Premium > Keyboard Shortcuts**.
2. In the **Keyboard Shortcuts:** drop-down, select the keyboard shortcut set that you want to delete.
3. At the right of the **Keyboard Shortcuts:** drop-down, click on the **Delete** button.
A confirmation prompt appears.
4. If you are sure you want to delete the selected keyboard shortcut set, click on **Yes**.
The selected keyboard shortcut set is removed from the **Keyboard Shortcuts:** drop-down.

Exporting Keyboard Shortcuts

You can export your current keyboard shortcut configuration into an XML file. You can reimport this file later to restore your configuration, or share it with project collaborators so that you all use the same keyboard shortcuts.



NOTE

When you export your keyboard shortcuts configuration, only the currently selected keyboard shortcuts set is exported.

How to export your keyboard shortcut configuration

1. Do one of the following to open the Keyboard Shortcuts dialog:
 - **Windows or GNU/Linux:** In the top menu, select **Edit > Keyboard Shortcuts**.
 - **macOS:** In the top menu, select **Harmony Premium > Keyboard Shortcuts**.
2. In the **Keyboard Shortcuts:** drop-down, make sure the keyboard shortcut set you want to export is selected.
3. At the right of the **Keyboard Shortcuts:** drop-down, click on the **Save...** button.
A save dialog appears.
4. Browse to the location where you want to save your keyboard shortcut file.
5. Type in the desired name for your keyboard shortcut file.
6. Click on **Save**.

The currently keyboard shortcut set has been exported as an XML file, in the selected location with the file name you gave it.

Importing Keyboard Shortcuts

You can import a keyboard shortcut configuration file exported from Harmony.



NOTES

- To export keyboard shortcuts into a file, see [Exporting Keyboard Shortcuts on page 12](#).
- When you import a keyboard shortcuts file, it is added to the list of keyboard shortcut sets in the Keyboard Shortcuts drop-down menu of the Keyboard Shortcuts dialog.

How to import a keyboard shortcut configuration file

1. Do one of the following to open the Keyboard Shortcuts dialog:
 - **Windows or GNU/Linux:** In the top menu, select **Edit > Keyboard Shortcuts**.
 - **macOS:** In the top menu, select **Harmony Premium > Keyboard Shortcuts**.
2. At the right of the **Keyboard Shortcuts:** drop-down, click on the **Load...** button.
An open dialog appears.
3. Browse to the directory where your keyboard shortcut file is located.
4. Select the keyboard shortcut file you want to import.
5. Click on **Open**.

The configuration selected keyboard shortcut file is loaded into the Keyboard Shortcuts dialog, and is added as a keyboard shortcut set in the **Keyboard Shortcuts:** drop-down menu.

Searching for Keyboard Shortcuts

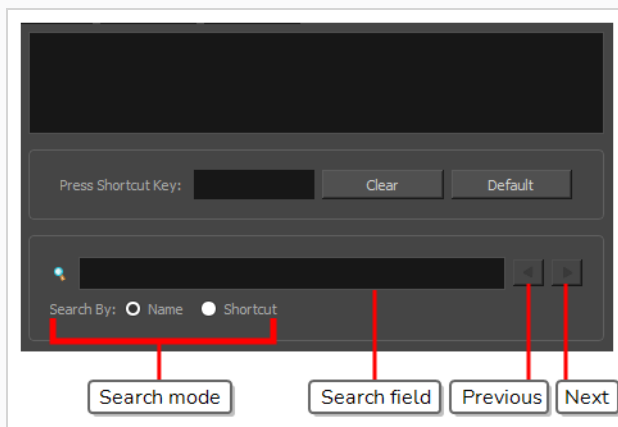
Harmony has a very extensive list of commands that can be assigned to keyboard shortcuts. Using the Search bar in the Keyboard Shortcuts dialog, you can:


- Search for a command, and its keyboard shortcut, by typing part or all of its name.
- Search for a command by typing part or all of its currently assigned keyboard shortcut.

How to search for a keyboard shortcut


1. Do one of the following to open the Keyboard Shortcuts dialog:

- **Windows or GNU/Linux:** In the top menu, select **Edit > Keyboard Shortcuts**.
- **macOS:** In the top menu, select **Harmony Premium > Keyboard Shortcuts**.



1. Below the  Search field, select the type of search you want to perform:

- **Name:** To search a command by typing part or all of its name.
- **Shortcut:** To search a command by typing part or all of its currently assigned keyboard shortcut.

2. In the  Search field, type in either part of the name of the command you want to find, or part of its currently assigned keyboard shortcut, depending on which option you chose in the previous step.



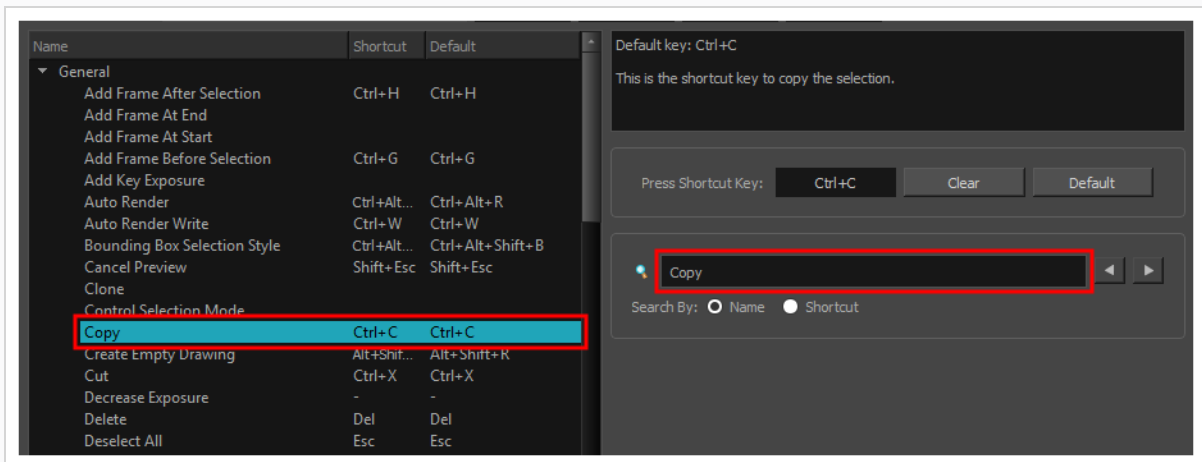
NOTES

- When searching for a command by its keyboard shortcut, if the keyboard shortcut is a combination, make sure that:
 - Modifier keys (Ctrl, Alt and Shift) are typed before other keys.
 - Join the keys by a + sign, with no space around it.

For example, to search for the **Copy** command, type **Ctrl+C**.

- On macOS, modifier keys such as Command (⌘), Control (⌃), Alt (⌥) and Shift (⇧) are represented by specific symbols that cannot be typed with a standard keyboard. You can copy and paste them from this document into the search field if you are reading this on a computer.

Harmony will immediately select the first command in the list that matches your search query.



3. If your query matches several commands in the list, uses the ◀ Previous and ▶ Next button right of the 🔍 Search field to navigate between matching commands.

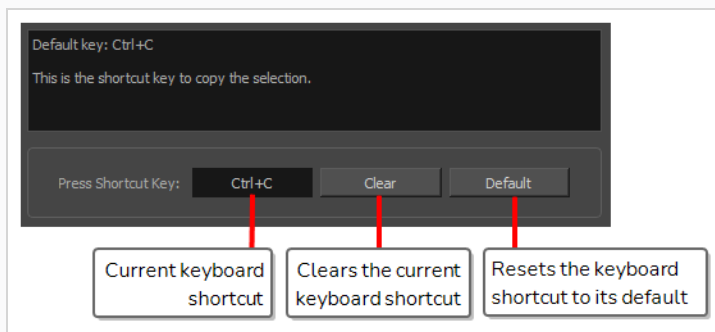
Customizing Keyboard Shortcuts

You can create your own keyboard shortcut for a tool or command, by assigning it to a certain key or combination of keys.

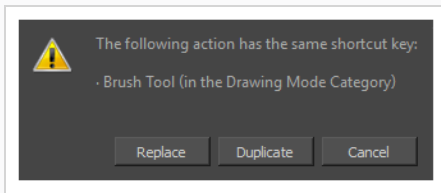
How to customize a keyboard shortcut

1. Do one of the following to open the Keyboard Shortcuts dialog:
 - **Windows or GNU/Linux:** In the top menu, select **Edit > Keyboard Shortcuts**.
 - **macOS:** In the top menu, select **Harmony Premium > Keyboard Shortcuts**.
2. In the list of commands and shortcuts to the left, locate and select the command for which you want to assign a keyboard shortcut—see [Searching for Keyboard Shortcuts](#).

The description of the selected command, as well as its currently assigned shortcut, appear in the right pane.



3. Do one of the following:
 - If you want to assign a custom shortcut to the selected command, click inside the box just right of **Press Shortcut Key:**.
 - If you want the selected command to have no keyboard shortcut, click on **Clear**.
 - If you want the selected command to be assigned to its default keyboard shortcut, click on **Default**.
4. If you are assigning a custom keyboard shortcut to the selected command, using your keyboard, type in the keyboard shortcut you want to use in the **Press Shortcut Key:** field.
5. If the keyboard shortcut you typed in is already in use by another command, a dialog box will prompt you to decide what to do.



If this occurs, choose one the following options depending on what suits your case better:

- **Replace:** This will unassign the keyboard shortcut from the commands listed in the dialog box, and assign it to the selected command.
- **Duplicate:** Assigns the keyboard shortcut to the selected command, and lets other commands use the same keyboard shortcut.



IMPORTANT

Having several commands share the same keyboard shortcut could cause undesired behaviour.

- **Cancel:** Allows you to attempt assigning a different keyboard shortcut to the selected command.

Resetting Keyboard Shortcuts

You can reset the configuration of your keyboard shortcuts to the default values for the selected keyboard shortcut set.



IMPORTANT

This will replace your current keyboard shortcut configuration and discard any custom keyboard shortcut you created.

How to reset your keyboard shortcuts configuration

1. Do one of the following to open the Keyboard Shortcuts dialog:
 - **Windows or GNU/Linux:** In the top menu, select **Edit > Keyboard Shortcuts**.
 - **macOS:** In the top menu, select **Harmony Premium > Keyboard Shortcuts**.
2. In the **Keyboard Shortcuts:** drop-down, make sure the keyboard shortcut set that you want to restore to its default configuration is selected.
3. In the bottom-left corner of the Keyboard Shortcuts dialog, click on **Restore All Defaults**.
A confirmation prompt appears.
4. If you are sure you want to restore the default keyboard shortcut configuration for the selected keyboard shortcut set, click on **Yes**.

All the commands in the list are now set to their default keyboard shortcut.

Default Keyboard Shortcuts

The following section lists all of the default keyboard shortcuts for Harmony.

To make it easier to search for specific keyboard shortcuts, the shortcuts have been divided and grouped into sections.

| | |
|---|----|
| General Keyboard Shortcuts | 21 |
| Camera Keyboard Shortcuts | 32 |
| Timeline Keyboard Shortcuts | 39 |
| Node View Keyboard Shortcuts | 47 |
| Exposure Sheet Keyboard Shortcuts | 50 |
| Colour Management Keyboard Shortcuts | 54 |
| Drawing Mode Keyboard Shortcuts | 55 |
| Function Editor Keyboard Shortcuts | 69 |
| Library Keyboard Shortcuts | 71 |
| Tagging Keyboard Shortcuts | 72 |
| Tool Presets Keyboard Shortcuts | 73 |
| 3D Graph Keyboard Shortcuts | 74 |
| Shift and Trace Keyboard Shortcuts | 76 |
| Deformation Keyboard Shortcuts | 77 |
| Envelope Creator Keyboard Shortcuts | 79 |
| Exposure Fill Keyboard Shortcuts | 80 |
| Gaming Keyboard Shortcuts | 81 |
| Guides Keyboard Shortcuts | 82 |
| Animated Matte Generator Keyboard Shortcuts | 83 |
| Particle Keyboard Shortcuts | 86 |
| Timesheet Keyboard Shortcuts | 87 |
| Mini Playback Keyboard Shortcuts | 89 |
| Node Caching Keyboard Shortcuts | 90 |

General Keyboard Shortcuts

| Command | Description | Windows/Linux | macOS | My Shortcut |
|------------------------------|--|------------------|---------------|-------------|
| Add Frame After Selection | The shortcut key to display the Add Frame After Selection dialog box in the Xsheet View. | Ctrl + H | Ctrl + H | |
| Add Frame At End | The shortcut key to display the Add Frame At Bottom dialog box in the Xsheet View. | | | |
| Add Frame At Start | The shortcut key to display the Add Frame At Top dialog box in the Xsheet View. | | | |
| Add Frame Before Selection | The shortcut key to display the Add Frame Before Selection dialog box in the Xsheet View. | Ctrl + G | ⌘ + G | |
| Add Key Exposure | Add a drawing key exposure. | | | |
| Advanced Save | This is the shortcut to open the Advanced Save dialog box. This dialog box is used to save specific parts of a scene (scene data, palette lists, palettes and drawings). | Ctrl + Shift + S | Shift + ⌘ + S | |
| Auto Render | This is the shortcut key to render frames automatically. | Ctrl + Alt + R | ⌘ + Alt + R | |
| Auto Render Write | This is the shortcut key to enable the Write nodes to write final frames to the file system. | Ctrl + W | ⌘ + W | |
| Bounding Box Selection Style | This is the shortcut key to toggle between BBox highlighting and colour highlighting of selected drawings. | | | |

| Command | Description | Windows/Linux | macOS | My Shortcut |
|---------------------------|--|-----------------|-----------------|-------------|
| Cancel Preview | This is the shortcut key to cancel the automatic preview. | Shift + Esc | Shift + Esc | |
| Clone | The shortcut key to main Edit->Clone | | | |
| Control Selection Mode | Enable the group selection of controls with the lasso or marquee. | | | |
| Copy | This is the shortcut key to copy the selection. | Ctrl + C | ⌘ + C | |
| Create Empty Drawing | This is the shortcut key used to replace selected drawings by new drawings. | Alt + Shift + R | Alt + Shift + R | |
| Cut | This is the shortcut key to cut the selection. | Ctrl + X | ⌘ + X | |
| Decrease Exposure | Removes one frame from the exposure of a timed value. | - | - | |
| Delete | This is the shortcut key to delete the selection. | Del | Backspace | |
| Deselect All | This is the shortcut key to deselect all selected objects. | Esc | Esc | |
| Disable Pivot Manipulator | When activated, the pivot point cannot be changed position visually. | | | |
| Duplicate | The shortcut key to main Edit->Duplicate. | | | |
| Duplicate Drawings | This is the shortcut key used to replace selected drawings by a copy of the drawing. | Alt + Shift + D | Alt + Shift + D | |

| Command | Description | Windows/Linux | macOS | My Shortcut |
|-------------------------------|---|---------------|---------|-------------|
| Easy Flip | This is the shortcut key to execute a single flip in the Drawing view. | | | |
| Export Animated GIF | Use this shortcut to open the Export Animated GIF window. | | | |
| Export Layout | Export scene layout to image. | | | |
| Face Selected to Draw | This is the shortcut key that makes the Perspective view perpendicular to a selected drawing, allowing you to draw on it. | | | |
| First Frame | This is the shortcut key to go to the first frame. | < | < | |
| Free Pan and Zoom | This is the shortcut key to pan and zoom the current view. | Space | Space | |
| Get Rights to Modify Drawings | The shortcut key to get the edit rights on the selected drawings. | Alt + L | Alt + L | |
| Go to Next Column | Go to Next Column | J | J | |
| Go to Next Drawing | Go to Next Drawing | G | G | |
| Go to Previous Column | Go to Previous Column | H | H | |
| Go to Previous Drawing | Go to Previous Drawing | F | F | |
| Go to the Eighth | Go to the Eighth Drawing in drawing view | | | |

| Command | Description | Windows/Linux | macOS | My Shortcut |
|---|---|---------------|-------|-------------|
| Drawing in Drawing View | | | | |
| Go to the Fifth Drawing in Drawing View | Go to the Fifth Drawing in drawing view | | | |
| Go to the First Drawing in Drawing View | Go to the first Drawing in drawing view | | | |
| Go to the Fourth Drawing in Drawing View | Go to the Fourth Drawing in drawing view | | | |
| Go to the Ninth Drawing in Drawing View | Go to the Ninth Drawing in drawing view | | | |
| Go to the Second Drawing in Drawing View | Go to the second Drawing in drawing view | | | |
| Go to the Seventh Drawing in Drawing View | Go to the Seventh Drawing in drawing view | | | |
| Go to the Sixth Drawing in Drawing View | Go to the Sixth Drawing in drawing view | | | |
| Go to the Tenth Drawing in Drawing View | Go to the Tenth Drawing in drawing view | | | |

| Command | Description | Windows/Linux | macOS | My Shortcut |
|---|--|------------------|---------------|-------------|
| Go to the Third Drawing in Drawing View | Go to the third Drawing in drawing view | | | |
| Help | This is the shortcut to the Online Help | | | |
| Import Movie | Import QuickTime movie to the scene | | | |
| Increase Exposure | Adds one frame to the exposure of a timed value. | + | + | |
| Invert Selection | This is the shortcut key to invert the selection in the current view. | Ctrl + Shift + I | Shift + ⌘ + I | |
| Jog Backward | This is the shortcut key to jog the frames backward. | | | |
| Jog Forward | This is the shortcut key to jog the frames forward. | | | |
| Last Frame | This is the shortcut key to go to the last frame. | > | > | |
| Look at Selected | This is the shortcut key that repositions a 3D object in the centre of the view. | | | |
| Merge | The shortcut key to main Edit->Merge | | | |
| Mirror View | This is the shortcut key to mirror the view horizontally. | | | |
| Move Backward | This is the shortcut key to move the camera backward in the current view. | | | |

| Command | Description | Windows/Linux | macOS | My Shortcut |
|---------------------|---|------------------|---------------|-------------|
| Move Forward | This is the shortcut key to move the camera forward in the current view. | | | |
| New | This is the shortcut to create a new scene. | Ctrl + N | ⌘ + N | |
| Next Frame | This is the shortcut key to go to the next frame. | period (.) | period (.) | |
| Open | This is the shortcut to open a scene or open drawings in paint mode. | Ctrl + O | ⌘ + O | |
| OpenGL Frames | Opens the Save OpenGL Frames dialog box | | | |
| Paste | This is the shortcut key to paste the clipboard contents to the scene. | Ctrl + V | ⌘ + V | |
| Paste Cycle | This is the shortcut key to paste the clipboard contents to the scene in cycles. | Ctrl + / | ⌘ + / | |
| Paste Reverse | This is the shortcut key to paste the clipboard contents to the scene in reverse. | Ctrl + . | Ctrl + . | |
| Paste Special | This is the shortcut key to paste the clipboard contents to the scene. | Ctrl + B | ⌘ + B | |
| Paste Special Again | This is the shortcut key to paste the clipboard contents to the scene. | Ctrl + Shift + B | ⌘ + Shift + B | |
| Peg Selection Mode | This is the shortcut key to toggle the peg selection mode for the transform tool. | | | |

| Command | Description | Windows/Linux | macOS | My Shortcut |
|-----------------------------------|---|--|--|-------------|
| Preferences | Launches the preferences dialog. | Ctrl + U | ⌘ + U | |
| Preview Manager | This is the shortcut key to open the Show/Hide Manager. | | | |
| Previous Frame | This is the shortcut key to go to the previous frame. | comma (,) | comma (,) | |
| Quick Close-up | This toggles between a global view and a close-up view. | Shift + Z | Shift + Z | |
| Read Changed Drawings | This is the shortcut key to reload drawings that have changed on disk. | Ctrl + ; | ⌘ + ; | |
| Recentre | This is the shortcut key to recentre the view on the mouse pointer in the current view. | N | N | |
| Record and Play | This is the shortcut key to record the camera view and play the result. | | | |
| Redo | This is the shortcut key to redo the an operation that was undone. | Ctrl + Shift + Z | Ctrl + Shift + Z | |
| Release Rights to Modify Drawings | The shortcut key to release the edit rights on selected drawings. | Alt + Shift + L | Alt + Shift + L | |
| Remove All Drawings | Removes all drawings from the thumbnails side panel. | Esc | Esc | |
| Remove Art Outside Selection | This is the shortcut key to delete the selection. | Shift + Del or Shift + Backspace | Shift + Del or Shift + Backspace | |
| Remove | Remove duplicate drawing key | | | |

| Command | Description | Windows/Linux | macOS | My Shortcut |
|-----------------------------|--|------------------|---------------|-------------|
| Duplicate Key Exposure | exposure. | | | |
| Remove Key Exposure | Remove a drawing key exposure. | | | |
| Rename by Frame | Rename drawings by their frame number. | | | |
| Rename Drawings | This is the shortcut key used to rename selected drawing. | Ctrl + D | ⌘ + D | |
| Rename Drawings with Prefix | This is the shortcut key used to rename selected drawing by prepending a prefix to its exposure. | | | |
| Render | Opens the Render Write Nodes dialog box, which you can use to initiate a local composite or batch composite operation. | Ctrl + Shift + Y | ⌘ + Shift + Y | |
| Render and Play | This is the shortcut key to render and preview your scene in the Player module. | | | |
| Reset Pan | This is the shortcut key to recentre the current view. | Shift + N | Shift + N | |
| Reset Rotation | This is the shortcut to reset the rotation of the current view. | Shift + X | Shift + X | |
| Reset View | This is the shortcut key to reset the pan, the zoom and the rotation in the current view. | Shift + M | Shift + M | |
| Reset Zoom | This is the shortcut key to reset the zoom level of the current view. | | | |

| Command | Description | Windows/Linux | macOS | My Shortcut |
|--------------------------------------|--|---------------|-----------|-------------|
| Rotate View CCW | This is the shortcut key to rotate the view counter clock-wise. | | | |
| Rotate View CW | This is the shortcut key to rotate the view clock-wise. | | | |
| Save | This is the shortcut to save everything in a scene (scene data, palette lists, palettes and drawings). | Ctrl + S | ⌘ + S | |
| Select All | This is the shortcut key to select everything in the current view. | Ctrl + A | ⌘ + A | |
| Select Child | Select Child. | | | |
| Select Child Skipping Effects | Select Child Skip Effects. | Shift + B | Shift + B | |
| Select Group Content | Select Group Content. | | | |
| Select Next Sibling | Select next brother. | ? | ? | |
| Select Parent | Select Parent. | | | |
| Select Parent Skipping Effects | Select Parent Skip Effects. | B | B | |
| Select Previous Sibling | Select previous brother. | / | / | |
| Select Synced Layers | This is the shortcut key to select all linked read layers. | | | |

| Command | Description | Windows/Linux | macOS | My Shortcut |
|--|---|---------------|---------|-------------|
| Share Functions | This is the shortcut key to share functions so that they are available to other layers. | | | |
| Shortcuts | Launches the shortcuts dialog. | | | |
| Show Colour Model | The shortcut key that opens/closes the Colour Model. | Shift+K | Shift+K | |
| Show Whats This | The shortcut key to Help. | F1 | ⌘ + / | |
| Shuttle Backward | This is the shortcut key to shuttle the frames backward. | | | |
| Shuttle Forward | This is the shortcut key to shuttle the frames forward. | | | |
| Shuttle Reset | This is the shortcut key to reset the shuttle control's position. | | | |
| Test SWF Movie | This is the shortcut key to render and preview your scene in a Flash movie. | | | |
| Toggle Auto-Apply | This is the shortcut key to toggle the Auto-Apply feature in node editors | | | |
| Toggle Auto-Get-Rights-to-Modify-Palette-Lists | This is the shortcut key to toggle the automatic locking of palette lists. | | | |
| Toggle Auto-Get-Rights-to-Modify-Palettes | This is the shortcut key to toggle the automatic locking of palettes. | | | |

| Command | Description | Windows/Linux | macOS | My Shortcut |
|--|---|----------------|----------------|-------------|
| Toggle Auto-Lock | This is the shortcut key to toggle the automatic locking of drawings. | | | |
| Toggle Editor | This is the shortcut key that opens the editor for the selected node. | Shift+E | Shift+E | |
| Toggle Full Screen | This is the shortcut key to toggle the full screen display mode. | Ctrl + F | ⌘ + F | |
| Toggle Playback | This is the shortcut key to playback frames in Sceneplanning views. It is invoked on keyRelease. | Shift + Return | Shift + Return | |
| Toggle Show Locked Drawings in Outline | This controls whether the drawings will be drawn in full or only in outline when they are locked. | | | |
| Toggle Velocity Editor | This is the shortcut to open the "Velocity Editor" | Shift + V | Shift + V | |
| Undo | This is the shortcut key to undo the previous operation. | Ctrl + Z | ⌘ + Z | |
| Unload Model | The shortcut key that unload the current frame in the Model View. | Del | Del | |
| Zoom In | This is the shortcut key to zoom-in the current view. | 2 | 2 | |
| Zoom Out | This is the shortcut key to zoom-out the current view. | 1 | 1 | |

Camera Keyboard Shortcuts

| Command | Description | Windows/Linux | macOS | My Shortcut |
|---------------------------------------|---|-----------------|-----------------|-------------|
| Add All to Onion Skin | Show all nodes in the onion skins. | Alt + Shift + O | Alt + Shift + O | |
| Add to Onion Skin | Show the selected nodes and their children in the onion skins. | Shift + S | Shift + S | |
| Animate Current Frame | Automatically creates keyframes at the current frame when using the Transform or Advanced Animation tools. | | | |
| Animate Off | All modifications done with an animation tool are applied across the entire scene duration. | | | |
| Animate Onion Skin Range | Modify existing keyframes in the frame range defined by the onion skin. Keyframes will be added at the first and last frames of this range if none are present. | | | |
| Bitmap Image Quality | This is the shortcut to set the small pixmap files image quality | Ctrl + Q | ⌘ + Q | |
| Centre on Selection | This shortcut centres the timeline's layer list on the current selection. | Shift + O | Shift + O | |
| Clear Alignment Guides | Clear all alignment guides | | | |
| Create Drawing from Drawing Selection | Create Drawing from Drawing Selection | F9 | ⌘ + F9 | |

| Command | Description | Windows/Linux | macOS | My Shortcut |
|-----------------------------|---|---------------|------------|-------------|
| Create Symbol | Create Symbol | F8 | F8 | |
| Distribute to Layers | Distribute all contours and groups of current drawings in separate layers | | | |
| Duplicate Symbol | Duplicate Selected Symbol | | | |
| Enable Alignment Guides | Enable Alignment Guides | | | |
| Enable/Disable Playback | This is the shortcut to turn on/off the ability to playback frames in the Top, Side or Free View. | | | |
| Enter Selected Symbol | Enter Selected Symbol | Ctrl + E | ⌘ + E | |
| Expand Symbol | Expand Symbol | Shift + F8 | Shift + F8 | |
| Flip Horizontal | This is the shortcut key to flip the selection horizontally. | 4 | 4 | |
| Flip Scale X | This is the shortcut key to flip the X axis scaling of the selection. | | | |
| Flip Scale Y | This is the shortcut key to flip the Y axis scaling of the selection. | | | |
| Flip Vertical | This is the shortcut key to flip the the selection vertically. | 5 | 5 | |
| Hide All Control Parameters | This is the shortcut to hide all controls in Sceneplanning views. | Shift + C | Shift + C | |

| Command | Description | Windows/Linux | macOS | My Shortcut |
|--|--|------------------------|---------------------|-------------|
| Hide Selected | This is the shortcut key to hide selected elements. | Alt + H | Alt + H | |
| Insert Control Point | This is the shortcut to insert a new control point in the currently selected 3D path. | P | P | |
| Insert Keyframe | This is the shortcut to insert a key frame in the currently selected layers. | F6 | F6 | |
| Insert Keyframe and Duplicate Drawings | This is the shortcut to insert a key frame and duplicate drawing in the currently selected layers. | | | |
| Insert Position Keyframe | This is the shortcut to insert a position key frame in the currently selected layers. | | | |
| Inverse Kinematics Tool | This is the shortcut for the "Inverse Kinematics" tool in Sceneplanning views. This tool is only useful on pegs. | Shift + I | Shift + I | |
| Lock Alignment Guides | Lock the alignment guides | | | |
| Lock All | Lock all. | Ctrl + Shift + L | ⌘ + Shift + L | |
| Lock All Others | Lock all others. | Ctrl + Alt + Shift + O | ⌘ + Alt + Shift + O | |
| Lock Selection | Lock the selection so it cannot be selected from the Sceneplanning views. | Ctrl + Alt + L | ⌘ + Alt + L | |
| Maintain Size Tool | This is the shortcut for the "Maintain Size" tool in Sceneplanning views. This | Alt + 6 | Alt + 6 | |

| Command | Description | Windows/Linux | macOS | My Shortcut |
|------------------------------------|--|------------------|---------------|-------------|
| | tool is only useful in the Side View or Top View. | | | |
| New Horizontal Alignment Guide | Create a new horizontal alignment guide | | | |
| New Vertical Alignment Guide | Create new vertical alignment guide | | | |
| Remove All Onion Skin | Hide all elements from the onion skins | Ctrl + Shift + O | ⌘ + Shift + O | |
| Remove Selection from Onion Skin | Hide from the onion skins elements that are selected | | | |
| Remove Unselected from Onion Skin | Hide from the onion skins elements that are not selected | | | |
| Reset All Transformations | This is the shortcut key to reset all transformations on the selected element | Shift + R | Shift + R | |
| Reset All Transformations Except Z | This is the shortcut key to reset all transformations on the selected element except their Z | | | |
| Reset Transformation | This is the shortcut key to reset transformation on the selected element. | R | R | |
| Return To Parent Symbol | Return to Parent Symbol | Ctrl + Shift + E | ⌘ + Shift + E | |
| Rotate Tool | This is the shortcut for the Rotate tool in Sceneplanning views. | Alt + 3 | Alt + 3 | |

| Command | Description | Windows/Linux | macOS | My Shortcut |
|-----------------------------------|--|-----------------|-----------------|-------------|
| Scale Tool | This is the shortcut for the Scale tool in Sceneplanning views. | Alt + 4 | Alt + 4 | |
| Select Control Point | This is the shortcut to select the control point closest to the mouse pointer. | T | T | |
| Select Next Control Point | This is the shortcut to select the next control point on the currently selected function path. | , | , | |
| Select Previous Control Point | This is the shortcut to select the previous control point on the currently selected function path. | semicolon (;) | semicolon (;) | |
| Show Alignment Guides | Show Alignment Guides | | | |
| Show Hidden | This is the shortcut to show hidden elements in the Sceneplanning views. | Alt + Shift + H | Alt + Shift + H | |
| Show Snapshot | This shortcut temporarily displays the last snapshot taken in the Camera View. | | | |
| Show/Hide Control Parameters | This is the shortcut to display the controls (either the spline of a peg or the handles on a quadmap) of the selected node in Sceneplanning views. | Shift + F11 | ⌘ + F11 | |
| Show/Hide Transform Tool Controls | Show/Hide Transform Tool Controls. | | | |
| Skew Tool | This is the shortcut for the | Alt + 5 | Alt + 5 | |

| Command | Description | Windows/Linux | macOS | My Shortcut |
|--------------------------------|--|---------------|---------|-------------|
| | Skew tool in Sceneplanning views. | | | |
| Spline Offset Tool | This is the shortcut for the "Spline Offset" tool in Sceneplanning views. | Alt + 8 | Alt + 8 | |
| Substitute Drawing Next | This is the shortcut key to change the exposed drawing to the next one. |] |] | |
| Substitute Drawing Previous | This is the shortcut key to change the exposed drawing to the previous one. | [| [| |
| Take Snapshot | This shortcut takes a snapshot of the camera view content. | | | |
| Toggle Between Line and Curve | This is the shortcut to toggle the continuity of the selected control point. | | | |
| Toggle Lock In Time | This is the shortcut to change the selected point from a control point, which is not locked in time, to a keyframe, which is locked in time. | Alt + L | Alt + L | |
| Toggle Onion Skin Drawing Mode | The onion skin is calculated using the next n drawings (versus the next n frames) in the camera view. | | | |
| Toggle Snap Keyframe | This is the shortcut to snap the next keyframe to the current keyframe's value. To snap, both keyframes must have the same initial value and the current segment must be marked as constant. | X | X | |

| Command | Description | Windows/Linux | macOS | My Shortcut |
|------------------|---|------------------------|---------------------|-------------|
| Transform Tool | This is the shortcut for the "Transform Tool" tool in the cameraview. | Shift + T | Shift + T | |
| Translate Tool | This is the shortcut for the Translate tool in Sceneplanning views. | Alt + 2 | Alt + 2 | |
| Unlock All | Unlock all. | Ctrl + Alt + Shift + L | ⌘ + Alt + Shift + L | |
| Unlock Selection | Unlock selection. | Ctrl + Shift + K | ⌘ + Shift + K | |

Timeline Keyboard Shortcuts

| Command | Description | Windows/Linux | macOS | My Shortcut |
|-------------------------------|---|---------------|---------|-------------|
| Centre On Selection | This shortcut centres the timeline's layer list on the current selection. | O | O | |
| Clear Exposure | Clear exposure. | | | |
| Clear Exposure and Pull | The shortcut key to clear the current frames in the timeline. | | | |
| Collapse All Elements | This shortcut collapses all elements. | O | O | |
| Collapse or Expand an Element | This shortcut collapses or expands an element. | Ctrl + I | ⌘ + I | |
| Convert Morphing to Drawings | Convert Morphing to Drawings | | | |
| Create Morphing | Add Morphing | Alt + M | Alt + M | |
| Create Scene Marker | Create a Scene Marker at the current timeline ruler selection. | | | |
| Delete Keyframe | The shortcut key to clear keyframes in the currently selected layers. | F7 | F7 | |
| Delete Morphing | Delete Morphing | | | |
| Disable All Other Elements | This shortcut disables all elements except the currently selected one. | | | |
| Disable Layers | This shortcut disables layers. | D | D | |

| Command | Description | Windows/Linux | macOS | My Shortcut |
|-----------------------------|---|------------------|---------------|-------------|
| Enable All Elements | This shortcut enables all elements. | | | |
| Enable Layers | This shortcut enables layers. | A | A | |
| Enable or Disable Elements | This shortcut enables or disables elements. | | | |
| Expand All Elements | This shortcut expands all elements. | 9 | 9 | |
| Extend Exposure | Extend Exposure | F5 | F5 | |
| Flip Horizontal | Horizontal flip of the selected frames | | | |
| Flip Vertical | Vertical flip of the selected frames | | | |
| Go to Next Blue Frame Mark | Go to Next Blue Frame Mark | | | |
| Go to Next Cyan Frame Mark | Go to Next Cyan Frame Mark | | | |
| Go to Next Frame Mark | Go to Next Frame Mark | | | |
| Go to Next Global Frame | Go to next frame in the top scene | Ctrl + Shift + C | ⌘ + Shift + C | |
| Go to Next Green Frame Mark | Go to Next Green Frame Mark | | | |
| Go to Next Keyframe | Go to Next Keyframe | ' | ' | |
| Go to Next | Go to Next Orange Frame Mark | | | |

| Command | Description | Windows/Linux | macOS | My Shortcut |
|---------------------------------|---------------------------------------|------------------|---------------|-------------|
| Orange Frame Mark | | | | |
| Go to Next Pink Frame Mark | Go to Next Pink Frame Mark | | | |
| Go to Next Purple Frame Mark | Go to Next Purple Frame Mark | | | |
| Go to Next Red Frame Mark | Go to Next Red Frame Mark | | | |
| Go to Next White Frame Mark | Go to Next White Frame Mark | | | |
| Go to Next Yellow Frame Mark | Go to Next Yellow Frame Mark | | | |
| Go to Previous Blue Frame Mark | Go to Previous Blue Frame Mark | | | |
| Go to Previous Cyan Frame Mark | Go to Previous Cyan Frame Mark | | | |
| Go to Previous Frame Mark | Go to Previous Frame Mark | | | |
| Go to Previous Global Frame | Go to previous frame in the top scene | Ctrl + Shift + X | ⌘ + Shift + X | |
| Go to Previous Green Frame Mark | Go to Previous Green Frame Mark | | | |
| Go to Previous Keyframe | Go to Previous Keyframe | semicolon (;) | semicolon (;) | |

| Command | Description | Windows/Linux | macOS | My Shortcut |
|----------------------------------|---|------------------|---------------|-------------|
| Go to Previous Orange Frame Mark | Go to Previous Orange Frame Mark | | | |
| Go to Previous Pink Frame Mark | Go to Previous Pink Frame Mark | | | |
| Go to Previous Purple Frame Mark | Go to Previous Purple Frame Mark | | | |
| Go to Previous Red Frame Mark | Go to Previous Red Frame Mark | | | |
| Go to Previous White Frame Mark | Go to Previous White Frame Mark | | | |
| Go to Previous Yellow Frame Mark | Go to Previous Yellow Frame Mark | | | |
| Group Selection | This shortcut creates a group from the selected layers. | Ctrl + G | ⌘ + G | |
| Group Selection With Composite | This shortcut creates a group with an internal composite from the selected nodes. | Ctrl + Shift + G | ⌘ + Shift + G | |
| Hide All Thumbnails | This shortcut hide thumbnails of all layers. | | | |
| Insert Blank Frame | The shortcut key to insert a blank frame in the timeline. | Shift + J | Shift + J | |
| Insert Camera | This shortcut adds a Camera. | | | |
| Insert Drawing | This shortcut adds a Drawing. | Ctrl + R | ⌘ + R | |

| Command | Description | Windows/Linux | macOS | My Shortcut |
|--|---|------------------------|---------------------|-------------|
| Insert Group | This shortcut adds a Group. | Alt + G | Alt + G | |
| Insert Keyframe | This shortcut adds a Keyframe | F6 | F6 | |
| Insert Keyframe and Duplicate Drawings | This shortcut adds a Keyframe and Duplicate Drawings | | | |
| Insert Morphing Keyframe | Insert Morphing Key Frame | | | |
| Insert Parent Peg | This shortcut adds a parent Peg. | Shift + P | Shift + P | |
| Insert Peg | This shortcut adds a Peg. | Ctrl + P | ⌘ + P | |
| Insert Quadmap | This shortcut adds a Quadmap. | | | |
| Insert Sound | This shortcut adds a Sound. | | | |
| Lock All | Lock all. | Ctrl + Shift + L | ⌘ + Shift + L | |
| Lock All Others | Lock all others. | Ctrl + Alt + Shift + O | ⌘ + Alt + Shift + O | |
| Lock Selection | Lock the selection so it cannot be selected from the Sceneplanning views. | Ctrl + Alt + L | ⌘ + Alt + L | |
| Mark Current Frame | Create a Scene Marker at the current frame. | | | |
| Mark Frame Blue | This is the shortcut to mark a frame blue in the currently selected layers. | | | |
| Mark Frame Cyan | This is the shortcut to mark a | | | |

| Command | Description | Windows/Linux | macOS | My Shortcut |
|-----------------------------------|---|---------------|-------|-------------|
| | frame cyan in the currently selected layers. | | | |
| Mark Frame Green | This is the shortcut to mark a frame green in the currently selected layers. | | | |
| Mark Frame Orange | This is the shortcut to mark a frame orange in the currently selected layers. | | | |
| Mark Frame Pink | This is the shortcut to mark a frame pink in the currently selected layers. | | | |
| Mark Frame Purple | This is the shortcut to mark a frame purple in the currently selected layers. | | | |
| Mark Frame Red | This is the shortcut to mark a frame red in the currently selected layers. | | | |
| Mark Frame White | This is the shortcut to mark a frame white in the currently selected layers. | | | |
| Mark Frame Yellow | This is the shortcut to mark a frame yellow in the currently selected layers. | | | |
| Paste Mode: Cycle Through Presets | Cycle through paste presets | | | |
| Paste Mode: Set All | Set paste preset mode to all | | | |
| Paste Mode: Set Exposures Only | Set paste preset mode to exposure only | | | |

| Command | Description | Windows/Linux | macOS | My Shortcut |
|---------------------------------|---|---------------|-------|-------------|
| Paste Mode: Set Key Frames Only | Set paste preset mode to key frames only | | | |
| Remove Frame Marker | This is the shortcut to remove a frame marker from the currently selected layers. | | | |
| Select Children | Select children. | | | |
| Set Exposure | Set Exposure | | | |
| Set Exposure to 1 | Set Exposure to 1 | | | |
| Set Exposure to 2 | Set Exposure to 2 | | | |
| Set Exposure to 3 | Set Exposure to 3 | | | |
| Set Motion Keyframe | Set Non Constant Keyframe | Ctrl + K | ⌘ + K | |
| Set Stop-Motion Keyframe | Set Constant Keyframe | Ctrl + L | ⌘ + L | |
| Show All Thumbnails | This shortcut show thumbnails of all layers. | | | |
| Show Composite | Show composite nodes in the timeline. | | | |
| Show Effects | Show effect nodes. | | | |
| Show Group | Show group nodes in the timeline. | | | |
| Show Manager | Show Layer Display Dialog. | | | |
| Show or Hide Thumbnails | This shortcut show or hide thumbnails of a layer. | T | T | |

| Command | Description | Windows/Linux | macOS | My Shortcut |
|-----------------------------|---|------------------------|---------------------|-------------|
| Show Sound Columns | Show sound columns. | | | |
| Show/Hide Functions | Show/Hide functions. | Alt + F | Alt + F | |
| Substitute Drawing Next | This is the shortcut key to change the exposed drawing to the next one. |] |] | |
| Substitute Drawing Previous | This is the shortcut key to change the exposed drawing to the previous one. | [| [| |
| Toggle Solo Mode | Toggle Solo Mode On and Off | | | |
| Unlock All | Unlock all. | Ctrl + Alt + Shift + L | ⌘ + Alt + Shift + L | |
| Unlock Selection | Unlock selection. | Ctrl + Shift + K | ⌘ + Shift + K | |
| View Mode Next | Will cycle through the Timeline view modes. | | | |
| View Mode Normal | This will set the Timeline view mode to the default one. | | | |
| View Mode Selected | This will set the Timeline to display only the selected nodes. | | | |
| View Mode Tagged | This will set the Timeline to display only the tagged nodes. | | | |

Node View Keyboard Shortcuts

| Command | Description | Windows/Linux | macOS | My Shortcut |
|-----------------------|--|------------------|---------------|-------------|
| Cable Cutter | This shortcut toggles the cable cutting mode. | | | |
| Cable Cutter Override | This shortcut temporarily enables the cable cutter, while held. | | | |
| Centre on Selection | Shortcut key to recentre the node view on the selected node. | O | O | |
| Centre to Child Node | Centre node view to child node of selected node or port. | Ctrl + Down | ⌘ + Down | |
| Centre to Parent Node | Centre node view to parent node of selected node or port. | Ctrl + Up | ⌘ + Up | |
| Copy Qualified Name | This is the shortcut key to copy the qualified name of the selected node or waypoint | Ctrl + Q | ⌘ + Q | |
| Create Backdrop | This shortcut adds a new backdrop to the Node View. | | | |
| Create Composite | This shortcut adds a new composite node to the Node View. | Ctrl + H | Ctrl + H | |
| Create Cutter | This shortcut adds a new cutter node to the Node View. | | | |
| Create Display | This shortcut adds a Display Node to the Node View. | Ctrl + Y | ⌘ + Y | |
| Create Group | This shortcut adds a new Group Node to the Node View. | Alt + G | Alt + G | |
| Create Parent | This shortcut adds a Parent Peg | Ctrl + Shift + P | ⌘ + Shift + P | |

| Command | Description | Windows/Linux | macOS | My Shortcut |
|----------------------|--|-----------------------|--------------------|-------------|
| Peg | Node to the Selected Nodes in the Node View. | | | |
| Create Peg | This shortcut adds a Peg Node to the Node View. | Ctrl + P | ⌘ + P | |
| Create Read | This shortcut adds a Read Node to the Node View. | Ctrl + R | ⌘ + R | |
| Create Waypoint | This shortcut adds a new floating, unconnected waypoint in the current group. | | | |
| Disable Node | This shortcut turns off selected nodes in the node network. | D | D | |
| Enable Node | This shortcut turns on selected nodes in the node network that have been disabled. | A | A | |
| Enter Group | This shortcut displays the contents of a Group Node. | Ctrl + Return | ⌘ + Return | |
| Exit Group | This shortcut goes back to the previous level of the Group Node. | Ctrl + Shift + Return | ⌘ + Shift + Return | |
| Group | This shortcuts adds a new Group Node to the Node View, and moves the selected nodes into it. | Ctrl + G | ⌘ + G | |
| Group with Composite | This shortcuts adds a new Group Node to the Node View, and moves the selected nodes into it. | Ctrl + Shift + G | ⌘ + Shift + G | |
| Hide All Thumbnails | This shortcut hides the thumbnails for all nodes. | Alt + T | Alt + T | |
| Magnifier | This is the shortcut key to | Z | Z | |

| Command | Description | Windows/Linux | macOS | My Shortcut |
|-------------------------------|---|-------------------|-------------------|-------------|
| | display a magnifier for the Node View. | | | |
| Move To Parent | This shortcut moves the selected nodes in the Group Node to the parent level, maintaining all node connections. | Ctrl + Shift + U | ⌘ + Shift + U | |
| Rename Waypoint | This shortcut will show a dialog to rename selected waypoint. | | | |
| Show All Nodes | This is the shortcut key to show all nodes in the Node View. | Shift + comma (,) | Shift + comma (,) | |
| Show/Hide Navigator | Default show/hide value for the the World View in the Node View. | Ctrl + Shift + W | ⌘ + Shift + W | |
| Show/Hide Selected Thumbnails | This shortcut shows the thumbnails for selected nodes. | T | T | |
| Ungroup | This shortcuts explode the group and moves all nodes within onto the selected level. | | | |

Exposure Sheet Keyboard Shortcuts

| Command | Description | Windows/Linux | macOS | My Shortcut |
|---------------------------------------|--|---------------|-----------|-------------|
| Add Columns | The shortcut key to display the Add Column dialog box in the Xsheet View. | Shift + C | Shift + C | |
| Add Drawing Column | The shortcut key to add a drawing column in the Xsheet View. | Ctrl + R | ⌘ + R | |
| Clear Exposure and Pull | The shortcut key to clear the current frames in insert mode in the Xsheet View. | | | |
| Clear Selected Cells | The shortcut key to clear the selected cell in the Xsheet View. | | | |
| Clone Selected Columns: Drawings Only | The shortcut key to clone the drawing columns in the current selection of the Xsheet View. | | | |
| Collapse | The shortcut key to Collapse column groups in the Xsheet View. | | | |
| Collapse All | The shortcut key to Collapse all column groups in the Xsheet View. | 0 | 0 | |
| Delete Selected Columns | This is the shortcut key used to delete selected columns. | | | |
| Delete Selected Drawings | This is the shortcut key used to delete selected drawings. | | | |
| Duplicate Selected Columns | The shortcut key to duplicate the drawing columns in the current selection of the | | | |

| Command | Description | Windows/Linux | macOS | My Shortcut |
|-------------------------|--|---------------|-----------|-------------|
| | Xsheet View. | | | |
| Enable/Disable Playback | This is the shortcut to turn on/off the highlight of the current frame during playback in the Xsheet View. | | | |
| Expand | The shortcut key used to Expand column groups in the Xsheet View. | | | |
| Expand All | The shortcut key to Expand all column groups in the Xsheet View. | 9 | 9 | |
| Fill Randomly | The shortcut key to display the Random Fill dialog in the Xsheet View. | | | |
| Fill Selection | The shortcut key to display the Fill dialog in the Xsheet View. | Ctrl + T | ⌘ + T | |
| Gestural Drag Mode | The shortcut key to enable/disable gestural editing in the Xsheet View. | | | |
| Hide Selected Column | The shortcut key to hide selected columns in the Xsheet View. | Alt + H | Alt + H | |
| Insert Blank Cell | The shortcut key to insert blank frames in insert mode in the Xsheet View. | Shift + J | Shift + J | |
| Insert Keyframe | The shortcut key to insert keyframes in the Xsheet View. | F6 | F6 | |
| Insert/Overwrite Mode | The shortcut key to switch between inserting and | I | I | |

| Command | Description | Windows/Linux | macOS | My Shortcut |
|------------------------|--|---------------|---------|-------------|
| | modifying cells in Drawings and Timing columns in the Xsheet View. | | | |
| Mark As Breakdown | Marks the selected drawings as breakdown drawings. | | | |
| Mark As In-between | Marks the selected drawings as in-between drawings. | | | |
| Mark As Key | Marks the selected drawings as key drawings. | | | |
| Merge Selected Columns | The shortcut key to merge the drawing columns in the current selection of the Xsheet View. | | | |
| Preview | The shortcut key to preview frames using Playback from the Xsheet View | Alt + P | Alt + P | |
| Remove Frames | This is the shortcut key used to remove selected frames. | | | |
| Sequence Fill | The shortcut key to display the Columdate dialog box in the Xsheet View. | Ctrl + M | ⌘ + M | |
| Set Custom Hold Cell | Set Custom Hold Cell | | | |
| Set Exposure to 1 | Set Exposure to 1 | | | |
| Set Exposure to 2 | Set Exposure to 2 | | | |
| Set Exposure to 3 | Set Exposure to 3 | | | |

| Command | Description | Windows/Linux | macOS | My Shortcut |
|---------------------|---|-----------------|-----------------|-------------|
| Set Exposure to 4 | Set Exposure to 4 | | | |
| Set Exposure to 5 | Set Exposure to 5 | | | |
| Set Exposure to 6 | Set Exposure to 6 | | | |
| Set Exposure to 7 | Set Exposure to 7 | | | |
| Set Exposure to 8 | Set Exposure to 8 | | | |
| Set Exposure to 9 | Set Exposure to 9 | | | |
| Set Hold 1 Cell | Set Hold 1 Cell | Ctrl + 1 | ⌘ + 1 | |
| Set Hold 2 Cells | Set Hold 2 Cells | Ctrl + 2 | ⌘ + 2 | |
| Set Hold 3 Cells | Set Hold 3 Cells | Ctrl + 3 | ⌘ + 3 | |
| Set Hold 4 Cells | Set Hold 4 Cells | Ctrl + 4 | ⌘ + 4 | |
| Show Column Types | The shortcut key to display the Show Columns dialog in the Xsheet View | | | |
| Show Hidden Columns | The shortcut key to display the Show Column dialog box in the Xsheet View. | Alt + Shift + H | Alt + Shift + H | |
| Thumbnails | The shortcut key to toggle the displaying of Thumbnails in the Xsheet View | | | |
| Zoom Extents | This is the shortcut key to set the zoom level to show all contents of the Xsheet View. | | | |

Colour Management Keyboard Shortcuts

| Command | Description | Windows/Linux | macOS | My Shortcut |
|-----------------------------------|---|---------------|---------|-------------|
| Get Rights to Modify All Palettes | Shortcut key for the Get Rights to Modify All Palettes command. | Alt + L | Alt + L | |
| Palette Go to Next Colour | Shortcut to change the current colour to the next colour. | | | |
| Palette Go to Previous Colour | Shortcut to change the current colour to the previous colour. | | | |
| Protect Colour Value | Shortcut to toggle on/off Protect Colour on selected colour pots. | | | |
| Recolour Drawing... | Shortcut to replace current colour in drawings | | | |

Drawing Mode Keyboard Shortcuts

| Command | Description | Windows/Linux | macOS | My Shortcut |
|--------------------------------------|---|---------------|---------|-------------|
| Activate Magnifier | Activate Magnifier temporarily or toggle it permanently if pressed with ALT. | | | |
| Apply Tool to All Frames | Turn on and off the Apply to All Frames mode. When Apply to All Frames is on, some operations will apply to all frames on the selected drawing layers. | Alt + A | Alt + A | |
| Apply Tool to Line and Colour Art | Turn on and off the Apply to Line and Colour Art mode. When Apply to Line and Colour Art is on, some operations will apply to all art layers of the drawing. | Shift+Q | Shift+Q | |
| Apply to Onion Skin Range | Turn on and off the Apply to Onion Skin Range mode. When Apply to Onion Skin Range is on, some operations will apply to all the drawings visible in the onion skin. | | | |
| Apply Tool to Synced Drawing Layers | Turn on and off the Apply to Synced Drawing Layers mode. When Apply to Synced Drawing Layers is on, some operations will apply to the current drawing layer and all layers synced with that layer in the Camera View. | | | |
| Apply Tool to Visible Drawing Layers | Turn on and off the Apply to Visible Drawing Layers mode. When Apply to Visible Drawing Layers is on, some operations will apply to all visible drawing layers in the | | | |

| Command | Description | Windows/Linux | macOS | My Shortcut |
|--|--|---------------------|------------------|-------------|
| | Camera View. | | | |
| Auto-Create Colour Art from Brush | Shortcut to toggle the Create Colour Art on Brush switch | Shift+F2 | Shift+F2 | |
| Automatically Fill Inside Regions | Automatically fill drawing shapes. | Ctrl + Shift + R | ⌘ + Shift + R | |
| Auto-Matte | Generate Auto-Matte. | | | |
| Bring Forward | Bring the selected drawing element one step forward. | Ctrl + PgUp | ⌘ + PgUp | |
| Bring To Front | Bring the selected drawing element to the front. | Ctrl + Shift + PgUp | ⌘ + Shift + PgUp | |
| Brush Tool | Activate the Brush Tool in Brush Mode. | Alt + B | Alt + B | |
| Brush Tool (General) | Activate the Brush Tool. | | | |
| Centerline Editor Tool | Activate the Centerline Editor Tool. | Alt + W | Alt + W | |
| Change Bitmap Drawing Resolution | Change the resolution for the selected bitmap drawing(s) | | | |
| Change Vector Drawing Brush Resolution | Change the brush resolution for the selected vector drawing(s) | | | |
| Close Desk | Close the Desk in the Drawing View | Alt + J | Alt + J | |
| Close Gap Interactive Tool | Pops up a dialog to adjust the size of gaps to be closed all | Shift+F10 | | |

| Command | Description | Windows/Linux | macOS | My Shortcut |
|---------------------------------------|---|---------------|-------------|-------------|
| | at once. | | | |
| Close Gap Tool | Activate the Close Gap Tool. | Alt + C | Alt + C | |
| Colour Eyedropper Tool | Activate the Colour Eyedropper Tool. | Alt + D | Alt + D | |
| Contour Editor Tool | Activate the Contour Editor Tool. | Alt + Q | Alt + Q | |
| Convert Brush Strokes to Pencil Lines | Convert Brush to Pencil. | ^ | ^ | |
| Convert Pencil Lines to Brush Strokes | Convert Pencil Lines to Brush. | & | & | |
| Convert Strokes to Pencil Lines | Convert selected (invisible) strokes to pencil lines. | Shift + F12 | Shift + F12 | |
| Convert to Bitmap Drawing | Render the selected vector drawing(s) to generate a corresponding bitmap drawing(s) | | | |
| Convert to Vector Drawing | Vectorize the selected bitmap drawing(s) to generate a corresponding vector drawing (s) | | | |
| Create Breaking Triangles | Create Breaking Triangles. | | | |
| Create Colour Art from Line Art | Line Art To Colour Art. | * | * | |
| Crop Brush Textures | Crop and optimize the brush textures. | | | |

| Command | Description | Windows/Linux | macOS | My Shortcut |
|---|---|---------------|-------------------|-------------|
| Cutter Tool | Activate the Cutter Tool. | Alt + T | Alt + T | |
| Cycle Through Flatten Drawing Modes | This shortcut cycles through the different drawing modes: Normal, Flatten Latest and Auto Flatten | | | |
| Decrement Brush Size | Decrement Brush Size. | | | |
| Delete All Morphing Hints | Delete All Morphing Hints | Shift + Del | Shift + Backspace | |
| Desk: Shift Trace Drawing Move Down | Move Shift and Trace Drawing Down. For the Desk's Shift and Trace Only. | | | |
| Desk: Shift Trace Drawing Move Up | Move Shift and Trace Drawing Up. For the Desk's Shift and Trace Only. | | | |
| Desk: Shift Trace Drawing Reset Position | Reset Shift and Trace Drawing Position. For the Desk's Shift and Trace Only. | | | |
| Desk: Shift Trace Drawing Toggle Peg State | Toggle Shift and Trace Drawing Peg State. For the Desk's Shift and Trace Only. | | | |
| Desk: Shift Trace Drawing Toggle Visibility | Toggle Shift and Trace Onion Skin Drawing Visibility. For the Desk's Shift and Trace Only. | | | |
| Desk: Shift Trace Move Tool | Shift and Trace Move Override Tool. For the Desk's Shift and Trace Only. | | | |
| Desk: Shift Trace Rotate Tool | Shift and Trace Rotate Override. For the Desk's Shift | | | |

| Command | Description | Windows/Linux | macOS | My Shortcut |
|--------------------------------------|--|------------------|-----------------|-------------|
| | and Trace Only. | | | |
| Desk: Shift Trace Scale Tool | Shift and Trace Scale Override. For the Desk's Shift and Trace Only. | | | |
| Desk: Shift Trace Toggle Manipulator | Toggle Shift and Trace Manipulator. For the Desk's Shift and Trace Only. | | | |
| Desk: Shift Trace Toggle View | Toggle Shift and Trace Peg View. For the Desk's Shift and Trace Only. | | | |
| Draw Behind | Toggle the Draw Behind mode for the current tool. | | | |
| Drawing Pivot Tool | This is the shortcut for the pivot tool. | Shift + P | Shift + P | |
| Edit Texture/Gradient Tool | Activate the Edit Texture/Gradient Tool | Shift + F3 | Shift + F3 | |
| Ellipse Tool | Activate the Ellipse Tool. | Alt + = | Alt + = | |
| Enable Morphing Pencil Hint Mode | Pencil Hint Mode | | | |
| Eraser Tool | Activate the Eraser Tool. | Alt + E | Alt + E | |
| First Frame | First Frame | | | |
| Flatten | Flatten. | Alt + Shift + F | Alt + Shift + F | |
| Flatten and Remove Extra Strokes | Shortcut to flatten and remove the extra strokes | Ctrl + Shift + F | ⌘ + Shift + F | |

| Command | Description | Windows/Linux | macOS | My Shortcut |
|-------------------------------|--|-----------------|-----------------|-------------|
| Flatten Latest | Shortcut to toggle the draw top layer switch | | | |
| Flip Horizontal | This is the shortcut key to flip horizontally drawing objects in Drawing mode. | | | |
| Flip Vertical | This is the shortcut key to flip vertically drawing objects in Drawing mode. | | | |
| Go to Next Morphing Frame | Go to Next Morphing Frame | | | |
| Go to Previous Morphing Frame | Go to Previous Morphing Frame | | | |
| Group | This is the shortcut key to group drawing objects in Drawing mode | Ctrl + G | ⌘ + G | |
| Hand Tool | Activate the Hand Tool. | | | |
| Increment Brush Size | Increment Brush Size. | | | |
| Ink Tool | Activate the Ink Tool. | | | |
| Join Pencil Lines | Join Pencil Lines. | Alt + Shift + J | Alt + Shift + J | |
| Light Table | The shortcut key that activates the Auto Light Table command. | Shift + L | Shift + L | |
| Line Tool | Activate the Line Tool. | Alt + \ | Alt + \ | |
| Merge Pencil Lines | Shortcut to merge selected pencil lines into a single pencil line. | | | |

| Command | Description | Windows/Linux | macOS | My Shortcut |
|----------------------------|--|---------------|-------|-------------|
| Morphing Tool | This is the shortcut for the drawing morphing tool. | F3 | F3 | |
| Onion Skin: 1 Next | The shortcut key that activates the Next Drawing command for the onion skin. | Ctrl + 1 | ⌘ + 1 | |
| Onion Skin: 1 Previous | The shortcut key that activates the Previous Drawing command for the onion skin. | ! | ! | |
| Onion Skin: 2 Next | The shortcut key that activates the Next Two Drawings command for the onion skin. | Ctrl + 2 | ⌘ + 2 | |
| Onion Skin: 2 Previous | The shortcut key that activates the Previous Two Drawings command for the onion skin. | @ | @ | |
| Onion Skin: 3 Next | The shortcut key that activates the Next Three Drawings command for the onion skin. | Ctrl + 3 | ⌘ + 3 | |
| Onion Skin: 3 Previous | The shortcut key that activates the Previous Three Drawings command for the onion skin. | # | # | |
| Onion Skin: Add 1 Next | The shortcut key that activates the Add One Next Drawing command for the onion skin. | | | |
| Onion Skin: Add 1 Previous | The shortcut key that activates the Add One Previous Drawing command for the onion skin. | | | |

| Command | Description | Windows/Linux | macOS | My Shortcut |
|--------------------------------|---|------------------------|---------------------|-------------|
| Onion Skin: No Next | The shortcut key that activates the No Next Drawings command for the onion skin. | Ctrl + ` | ⌘ + ` | |
| Onion Skin: No Previous | The shortcut key that activates the No Previous Drawings command for the onion skin. | ~ | ~ | |
| Onion Skin: Reduce 1 Next | The shortcut key that activates the Reduce One Next Drawing command for the onion skin. | | | |
| Onion Skin: Reduce 1 Previous | The shortcut key that activates the Reduce One Previous Drawing command for the onion skin. | | | |
| Optimize | Combine the selected drawing's strokes. | Ctrl + Alt + Shift + C | ⌘ + Alt + Shift + C | |
| Paint and Remove Texture | Shortcut to toggle the Paint Over Texture switch | Shift + F6 | Shift + F6 | |
| Paint Tool | Activate the Paint Tool. | Alt + I | Alt + I | |
| Paint Tool (General) | Activate the Paint Tool without changing its mode. | | | |
| Paint Unpainted Tool | Activate the Paint Tool in Paint Unpainted Mode. | Alt+Y | Alt+Y | |
| Pencil Editor Tool | Activate Pencil Editor Tool temporarily or permanently if pressed with ALT. | 8 | 8 | |
| Pencil Texture Eyedropper Tool | Activate the Pencil Texture Eyedropper Tool. | | | |

| Command | Description | Windows/Linux | macOS | My Shortcut |
|-----------------------------------|---|------------------|---------------|-------------|
| Pencil Tool | Activate the Pencil Tool. | Alt + / | Alt + / | |
| Permanent Selection | Selects drawings in the specified area for all frames in the scene. | Ctrl + Shift + P | ⌘ + Shift + P | |
| Perspective Tool | This is the shortcut for the drawing perspective tool. | Alt + 0 | Alt + 0 | |
| Polyline Tool | Activate the Polyline Tool. | Alt + _ | Alt + _ | |
| Preview Line and Colour Arts | Shortcut key to toggle Preview Mode on and off in the Drawing View. In Preview Mode, all layers of the drawing are visible; only the active layer (Line Art or Colour Art) is visible when Preview Mode is off. | P | P | |
| Rectangle Tool | Activate the Rectangle Tool. | Alt + 7 | Alt + 7 | |
| Reduce Drawing Texture Resolution | Reduce drawing texture resolution. | | | |
| Remove Dirt | Shortcut to call the remove dirt function | Shift + D | Shift + D | |
| Remove Hair | Pops a dialog to adjust the length of hair to be removed. | | | |
| Remove Selected Drawing | Removes the selected drawing from the thumbnails side panel. | | | |
| Remove Art Inside Selection | Removes art inside selection on current drawing | | | |

| Command | Description | Windows/Linux | macOS | My Shortcut |
|---|---|---------------|-----------|-------------|
| Remove Art Inside Selection on All Drawings | Removes art inside selection on all drawings | | | |
| Removes Art Outside Selection | Removes art outside selection on current drawing | | | |
| Removes Art Outside Selection on All Drawings | Removes art outside selection on all drawings | | | |
| Repaint Brush Tool | Activate the Brush Tool in Repaint Mode. | Alt + X | Alt + X | |
| Repaint Tool | Activate the Paint Tool in Repaint Mode. | Alt + R | Alt + R | |
| Reposition All Drawings Tool | Activate the Reposition All Drawings Tool. | | | |
| Resize Pencil Style Tool | This is the shortcut for the tool to resize pencil. | O | O | |
| Rotate 180 | Rotate the drawing 180 degrees. | | | |
| Rotate 90 CCW | Rotate the drawing 90 degrees counterclockwise. | Ctrl + 7 | ⌘ + 7 | |
| Rotate 90 CW | Rotate the drawing 90 degrees clockwise. | Ctrl + 9 | ⌘ + 9 | |
| Rotate View Tool | Activate the Rotate View Tool. | | | |
| Select Delete Morphing Hint Mode | Select Delete Morphing Hint Mode | DeleteDel | Backspace | |

| Command | Description | Windows/Linux | macOS | My Shortcut |
|--|---|-----------------------|--------------------|-------------|
| Select Morphing Appearing Point Mode | Appearing Point Mode | | | |
| Select Morphing Contour Hint Mode | Contour Hint Mode | F7 | F7 | |
| Select Morphing Vanishing Point Mode | Vanishing Point Mode | F10 | F10 | |
| Select Morphing Zone Hint Mode | Zone Hint Mode | | | |
| Select Strokes with Current Colour | This is the shortcut key to select all drawing objects in the active layer(s) of a drawing that are coloured with the current colour. | Ctrl + Shift + A | ⌘ + Shift + A | |
| Select Strokes with Current Pencil Texture | This is the shortcut key to select all drawing objects in the active layer(s) of a drawing that use the current pencil texture. | | | |
| Select Tool | Activate the Select Tool. | Alt + S | Alt + S | |
| Send Backward | Send the selected drawing element one step backward. | Ctrl + PgDown | ⌘ + PgDown | |
| Send to Back | Send the selected drawing element to the back. | Ctrl + Shift + PgDown | ⌘ + Shift + PgDown | |
| Show Grid | Show/hide the Drawing View grid by default. | Ctrl + ' | ⌘ + ' | |
| Show Grid Outline Only | Toggle between the display of the drawing view grid in | | | |

| Command | Description | Windows/Linux | macOS | My Shortcut |
|-----------------------------------|--|------------------|-----------------|-------------|
| | outline or full field chart mode. | | | |
| Show Other Morphing Key Drawing | Shortcut to toggle the display of other drawing of a morphing sequence in a thumbnail | Ctrl + Shift + M | ⌘ + Shift + M | |
| Show Scan Info Panel | Show/hide the panel that display the scan info for the selected drawing in the drawing view. | | | |
| Show Strokes | Shortcut key to the Show Strokes command. | K | K | |
| Show Symbol Pivot | Show/hide the Current Symbol Pivot. | | | |
| Show/Hide Contour Editor Controls | Show/Hide Rotation and Scale Controls | Alt+F5 | Alt+F5 | |
| Show/Hide Onion Skin | Toggles on and off the onion skin. | Alt + O | Alt + O | |
| Smooth | Smooth. | Alt + Shift + S | Alt + Shift + S | |
| Smooth Editor Tool | Activate the Smooth Editor Tool. | | | |
| Snap and Align | Use drawing bounding boxes for snapping and alignment. | Ctrl + Alt + , | ⌘+Alt + , | |
| Snap to Contour | Use drawing contours for snapping. | Ctrl + Alt + ; | ⌘+Alt + ; | |
| Snap to Grid | Snap drawings to the grid. | Ctrl + Alt + ' | ⌘ + Alt + ' | |

| Command | Description | Windows/Linux | macOS | My Shortcut |
|----------------------------------|--|-----------------|-----------------|-------------|
| Split Pencil Line | Split Pencil Line. | Alt+Shift+K | Alt+Shift+K | |
| Stamp Tool | Activate the Stamp tool. | | | |
| Stroke Tool | Activate the Stroke Tool. | Alt + V | Alt + V | |
| Suggest Morphing Hints | Suggest Hints | | | |
| Switch to Line Art/Colour Art | Shortcut key to toggle between Line Art and Colour Art in a drawing. | L | L | |
| Switch to Overlay/Underlay Layer | Shortcut key to toggle between overlay and underlay layer in a drawing. | colon (:) | colon (:) | |
| Text Tool | Activate the Text Tool. | Alt + 9 | Alt + 9 | |
| Toggle Backlight | Shortcut key to turn the Backlight on and off in the Drawing View. | Alt + Shift + B | Alt + Shift + B | |
| Toggle Line Building Mode | Turn on and off the Pencil Tool Line Building Mode. This mode allows to append new pencil strokes to existing one when drawing with the Pencil Tool and Line Tool. | | | |
| Toggle Morphing Key Drawings | Show/Toggle Drawing | F4 | F4 | |
| Toggle Protect Colours | Turn on and off the Respect Sticky Colours option. When Respect Sticky Colours is on, you cannot change the colour of objects painted with sticky colours. | Shift + S | Shift + S | |

| Command | Description | Windows/Linux | macOS | My Shortcut |
|--------------------------|---|------------------|---------------|-------------|
| Toggle stabilizer on/off | Toggle the pen stabilizer on and off | | | |
| Ungroup | This is the shortcut key to ungroup drawing objects in Drawing mode | Ctrl + Shift + G | ⌘ + Shift + G | |
| Unpaint Tool | Activate the Paint Tool in Unpaint Mode. | Alt + U | Alt + U | |
| Zoom Tool | Activate Zoom Tool temporarily or permanently if pressed with ALT. | Alt + Z | Alt + Z | |

Function Editor Keyboard Shortcuts

| Command | Description | Windows/Linux | macOS | My Shortcut |
|----------------------------|---|---------------|---------------|-------------|
| Insert Point | In Function Editors, the shortcut key to insert a point. | | | |
| Lock/Unlock Point | In Function Editors, this shortcut key locks control points to a frame number or unlocks a key frame. | | | |
| Select Left Handle | This is the shortcut to select the left handle of a selected keyframe. | [| [| |
| Select Next Keyframe | This is the shortcut to select the next keyframe. | , | , | |
| Select Prev Keyframe | This is the shortcut to select the previous keyframe. | semicolon (;) | semicolon (;) | |
| Select Right Handle | This is the shortcut to select the right handle of a selected keyframe. |] |] | |
| Toggle Grid | In Function Editors, the shortcut key to display grid. | G | G | |
| Toggle Stop-Motion Segment | Shortcut key to toggle the Constant Segment attribute of a function keypoint. In a 3D path, to hold on a position for a while, then jump to another position, set the corresponding segment constant in its velocity curve. | S | S | |
| Zoom In X | In Function Editors, the shortcut key to zoom in the X axis. | 4 | 4 | |
| Zoom In Y | In Function Editors, the shortcut key to zoom in the Y axis. | 6 | 6 | |
| Zoom Out X | In Function Editors, the shortcut | 3 | 3 | |

| Command | Description | Windows/Linux | macOS | My Shortcut |
|------------|---|---------------|-------|-------------|
| | key to zoom out in the X axis. | | | |
| Zoom Out Y | In Function Editors, the shortcut key to zoom out the Y axis. | 5 | 5 | |

Library Keyboard Shortcuts

| Command | Description | Windows/Linux | macOS | My Shortcut |
|------------|--|---------------|-------|-------------|
| Details | Shortcut key to turn on the detail view | | | |
| List | Shortcut key to turn on the list view. | | | |
| Refresh | Shortcut key that reloads the list of contents in the Library. | F5 | F5 | |
| Rename | Shortcut key that renames a library folder or template. | | | |
| Thumbnails | Shortcut key to turn on the thumbnail view. | | | |

Tagging Keyboard Shortcuts

| Command | Description | Windows/Linux | macOS | My Shortcut |
|------------------|---|---------------|-------|-------------|
| Tag Selection | This is the shortcut key to tag the selection. | | | |
| Untag All | This is the shortcut key to untag all nodes. | | | |
| Untag All Others | This is the shortcut key to untag all nodes except the selection. | | | |
| Untag Selection | This is the shortcut key to untag the selection. | | | |

Tool Presets Keyboard Shortcuts

| Command | Description | Windows/Linux | macOS | My Shortcut |
|--------------------------|--------------------------|---------------|-------|-------------|
| Tool Preset Shortcut #01 | Tool Preset Shortcut 1. | | | |
| Tool Preset Shortcut #02 | Tool Preset Shortcut 2. | | | |
| Tool Preset Shortcut #03 | Tool Preset Shortcut 3. | | | |
| Tool Preset Shortcut #04 | Tool Preset Shortcut 4. | | | |
| Tool Preset Shortcut #05 | Tool Preset Shortcut 5. | | | |
| Tool Preset Shortcut #06 | Tool Preset Shortcut 6. | | | |
| Tool Preset Shortcut #07 | Tool Preset Shortcut 7. | | | |
| Tool Preset Shortcut #08 | Tool Preset Shortcut 8. | | | |
| Tool Preset Shortcut #09 | Tool Preset Shortcut 9. | | | |
| Tool Preset Shortcut #10 | Tool Preset Shortcut 10. | | | |

3D Graph Keyboard Shortcuts

| Command | Description | Windows/Linux | macOS | My Shortcut |
|---------------------------|--|---------------|-------|-------------|
| Add 3D Kinematic Output | Add a 3D Kinematic Output under the selected node and set its filter to the selected subnode key. The name added 3D Kinematic Output will be the name of the selected subnode plus "-Output" appended to it. | | | |
| Collapse All Elements | Collapse all branches. | 0 | 0 | |
| Collapse Selection | Collapse selected branches. | | | |
| Disable Subnode | Disables the visibility of a selection of node(s). | | | |
| Enable Subnode | Enables the visibility of a selection of node(s). | | | |
| Expand All Elements | Expand all branches. | 9 | 9 | |
| Expand Selection | Expand selected branches. | | | |
| Make Properties Available | Create transformation attributes for a subnode that didn't have any transformation before. It automatically creates a corresponding subnode layer under the selected node layer in the timeline. | | | |
| Select Child Subnodes | The current selection will move to its first subnode child. | | | |

| Command | Description | Windows/Linux | macOS | My Shortcut |
|---------------------------------|--|---------------|-------|-------------|
| Select Next Sibling Subnode | The current selection will go to the next sibling subnode on the same level and under the same parent subnode. | | | |
| Select Parent Subnode | The current selection will move to its subnode parent. | | | |
| Select Previous Sibling Subnode | The current selection will go to the previous sibling subnode on the same level and under the same parent subnode. | | | |

Shift and Trace Keyboard Shortcuts



NOTE

These keyboard shortcuts work with the Shift and Trace tool which can be used in the Camera view, not the Shift and Trace functionality of the desk in the Drawing view.

| Command | Description | Windows/Linux | macOS | My Shortcut |
|--|---|---------------|-------|-------------|
| Reset Shift and Trace of All Drawings | Reset the shift and trace position of all drawings on the current drawing layer. | | | |
| Reset Shift and Trace of Selected Drawings | Reset the shift and trace position of the selected drawings. | | | |
| Shift and Trace Tool | Use the Shift and Trace Tool to change the position of drawings in the Camera View when Shift and Trace is enabled. If you assign 'Alt + a shortcut key', you can temporarily override the current tool by using the shortcut key without the Alt modifier. Using Alt + key will activate the Shift and Trace tool. | | | |
| Shift and Trace Rotate | Use this shortcut to temporarily override from any tool to the Rotate mode of the Shift and Trace tool. | | | |
| Shift and Trace Scale | Use this shortcut to temporarily override from any tool to the Scale mode of the Shift and Trace tool. | | | |

Deformation Keyboard Shortcuts

| Command | Description | Windows/Linux | macOS | My Shortcut |
|--|--|---------------|-------|-------------|
| Add Articulation Node | Add Articulation Node. | | | |
| Add Bone Node | Add Bone Node. | | | |
| Add Curve Node | Add Curve Node. | | | |
| Add Game Bone Node | Add Game Bone Node. | | | |
| Add Offset Node | Add Offset Node. | | | |
| Add Stick Node | Add Stick Node. | | | |
| Convert Elliptic ROI to Shape | Convert Elliptic Zones of Influence to Shaped Region of Influence. | | | |
| Convert to New Drawing and Add Deformation Chain | Convert Drawing to a New Drawing and Add a Deformation Chain. | | | |
| Remove All Key Frames | Remove all the key frames of the selected deformation chain. | | | |
| Show Current Deformers | Show the Selected Deformation Chain and Hide All Others | | | |
| Show Selected Deformers | Shows the controls of the selected drawing's deformation chain. | | | |
| Unset Local Flag | Uncheck the Selected Nodes Local Flag. | | | |

| Command | Description | Windows/Linux | macOS | My Shortcut |
|------------------|---|---------------|-------|-------------|
| Unset Local Flag | Copy the curve point position to the parent offset. | | | |

Envelope Creator Keyboard Shortcuts

| Command | Description | Windows/Linux | macOS | My Shortcut |
|--------------------|-------------------------------|---------------|-------|-------------|
| Create Envelope | Envelope Creator | | | |
| Create Envelope... | Show Envelope Creator Options | | | |

Exposure Fill Keyboard Shortcuts

| Command | Description | Windows/Linux | macOS | My Shortcut |
|----------------------|---|---------------|-------|-------------|
| Using Render Changes | Fill the Exposure Based on Rendering Changes. | | | |

Gaming Keyboard Shortcuts

| Command | Description | Windows/Linux | macOS | My Shortcut |
|------------------|-----------------|---------------|-------|-------------|
| Select Group #01 | Select Group 01 | | | |
| Select Group #02 | Select Group 02 | | | |
| Select Group #03 | Select Group 03 | | | |
| Select Group #04 | Select Group 04 | | | |
| Select Group #05 | Select Group 05 | | | |
| Select Group #06 | Select Group 06 | | | |
| Select Group #07 | Select Group 07 | | | |
| Select Group #08 | Select Group 08 | | | |
| Select Group #09 | Select Group 09 | | | |
| Select Group #10 | Select Group 10 | | | |

Guides Keyboard Shortcuts

| Command | Description | Windows/Linux | macOS | My Shortcut |
|--------------------------|---|---------------|-----------|-------------|
| Align with Guide | When enabled, drawing tools will draw aligned with guides | | | |
| Enable Guide | Enable guide for assistive drawing | Shift + G | Shift + G | |
| Enable Guide with Eraser | When enabled, guide remains effective with eraser | | | |
| Full Cursor Display | When enabled, lines from the mouse cursor will extend to the edge of the drawing area | | | |
| Lock Guide | When enabled, guides are locked in position and cannot be modified | | | |
| Show Reference Lines | Display additional lines used as visual reference for the guide | | | |

Animated Matte Generator Keyboard Shortcuts

| Command | Description | Windows/Linux | macOS | My Shortcut |
|--|--|---------------|-------|-------------|
| Add Matte Point Mode | Enable the Add Matte Point mode in which it is possible to add new control points on the matte contour. | | | |
| Align Matte Handles | Make the handle angles identical on each side of the matte control points. | | | |
| Contract Selected Inner Matte Points | Move the selected inner matte points towards the matte's pivot. | | | |
| Contract Selected Outer Matte Points | Move the selected outer matte points towards the matte's pivot. | | | |
| Define Matte Point Mode | Enable the Define Matte Point Mode in which it is possible to modify the matte control points. | | | |
| Delete Matte Point Animation | Remove selected matte point keyframes. | | | |
| Delete Selected Matte Point | Delete selected matte points. | | | |
| Delete Unused Matte Generator Attributes | Remove unused attributes of the Animated Matte Generator node. | | | |
| Drag Matte Inner Contour Only | Drag only the control points of the matte inner contour. This action works in Define Matte Point and Setup Snapping modes. | | | |

| Command | Description | Windows/Linux | macOS | My Shortcut |
|---------------------------------------|--|---------------|-------|-------------|
| Drag Matte Outer Contour Only | Drag only the control points of the matte outer contour. This action works in Define Matte Point and Setup Snapping modes. | | | |
| Expand Selected Inner Matte Points | Move the selected inner matte points away from the matte's pivot. | | | |
| Expand Selected Outer Matte Points | Move the selected outer matte points away from the matte's pivot. | | | |
| Make Selected Matte Points Animatable | Create the attributes of the selected matte control points in the Timeline view without adding a keyframe. | | | |
| Merge Inner and Outer Matte Contours | Merge selected matte control points of inner and outer contour. | | | |
| Set to Snap Mode | Enable the Set to Snap Mode in which it is possible to define the snapping of each matte control points and contour. | | | |
| Shorten Matte Handles | Shorten matte handles by 30%. | | | |
| Toggle Auto Key on All Points | Toggle Auto Key on All Points setting. | | | |
| Toggle Fix Adjacent Keyframes | Toggle Fix Adjacent Keyframes setting. | | | |

| Command | Description | Windows/Linux | macOS | My Shortcut |
|---------------------------------|---|---------------|-------|-------------|
| Toggle Show Matte Inner Contour | Toggle the visibility of the matte inner contour. | | | |
| Toggle Show Matte Outer Contour | Toggle the visibility of the matte outer contour. | | | |
| Toggle Show Matte Point Id | Toggle the visibility of the matte control points id. | | | |
| Toggle Show Scaling Controls | Toggle the visibility of the scaling controls. | | | |

Particle Keyboard Shortcuts

| Command | Description | Windows/Linux | macOS | My Shortcut |
|------------------------|--|---------------|-------|-------------|
| Show Particles as Dots | Show Particles as Dots in Camera View. | | | |

Timesheet Keyboard Shortcuts

The following keyboard shortcuts are useful if you are working in a traditional Japanese animation pipeline. They use functionalities specific to the *Timesheet*, a special mode of the *Xsheet* view when using Harmony in Japanese.

| Command | Description | Windows/Linux | macOS | My Shortcut |
|--------------------|--|---------------|-------|-------------|
| Add Camera Column | Adds a Camera column. | | | |
| Add Camera Fairing | Adds a wiggle line marker in the Camera column for Fairing. | | | |
| Add Camera Pan | Adds a straight line marker in the Camera column for Pan. | | | |
| Add Camera Point | Adds a marker in the Camera column for a customized camera position. | | | |
| Add Camera Point A | Adds a marker in the Camera column for the A camera position. | | | |
| Add Camera Point B | Adds a marker in the Camera column for the B camera position. | | | |
| Add Camera Point C | Adds a marker in the Camera column for the C camera position. | | | |
| Add Slide Marker A | Adds an A marker in the Camera column for layer slides or movements. | | | |
| Add Slide Marker E | Adds an A marker in the Camera column for layer slides or movements. | | | |
| Add Slide Marker I | Adds an A marker in the Camera column for layer slides or movements. | | | |

| Command | Description | Windows/Linux | macOS | My Shortcut |
|---------------------------|---|---------------|-------|-------------|
| Add Slide Marker O | Adds an A marker in the Camera column for layer slides or movements. | | | |
| Add Slide Marker U | Adds an A marker in the Camera column for layer slides or movements. | | | |
| Add Sound Column | Adds a sound column named S. | | | |
| Clear Inbetween Markers | Clears the cell marker Inbetween, Reverse Inbetween or Reverse Reference. | | | |
| Export Timesheet to PDF | Exports the Timesheet information to a PDF file. | | | |
| Generate Cell Columns | Generates new columns from the selected columns, renames the drawing in ascending order and replaces inbetween markers with drawings. | | | |
| Mark as Breakdown | Marks the selected cell as a breakdown. | | | |
| Mark as Inbetween | Marks the selected cell as an inbetween. | | | |
| Mark as Key | Marks the selected cell as a key drawing. | | | |
| Mark as Reverse Inbetween | Marks the selected cell as a reverse inbetween. | | | |

Mini Playback Keyboard Shortcuts

| Command | Description | Windows/Linux | macOS | My Shortcut |
|----------------------|--------------------------------|---------------|-------|-------------|
| Mini Playback | Starts the mini playback | | | |
| Mini Playback Dialog | Opens the mini playback dialog | | | |

Node Caching Keyboard Shortcuts

| Command | Description | Windows/Linux | macOS | My Shortcut |
|--|--|---------------|-------|-------------|
| Always Playback with Cached Previews | Always display cached previews during playback | | | |
| Disable Preview Cache when selecting nodes | <p>When active, selecting a node in the Node or Timeline views will disable cache previews for the selection.</p> <p>When inactive, nodes selected through the Node or Timeline views will still be displayed using their cached previews.</p> <p>This has no impact on selection made through the Camera View</p> | | | |
| OpenGL Node Caching | Toggles the OpenGL Node Caching | | | |
| Show cached preview | Reset all the nodes and display their cached preview if any | | | |
| Toggle Node's Cache | Toggle the Cache attribute for the Selected Nodes | | | |