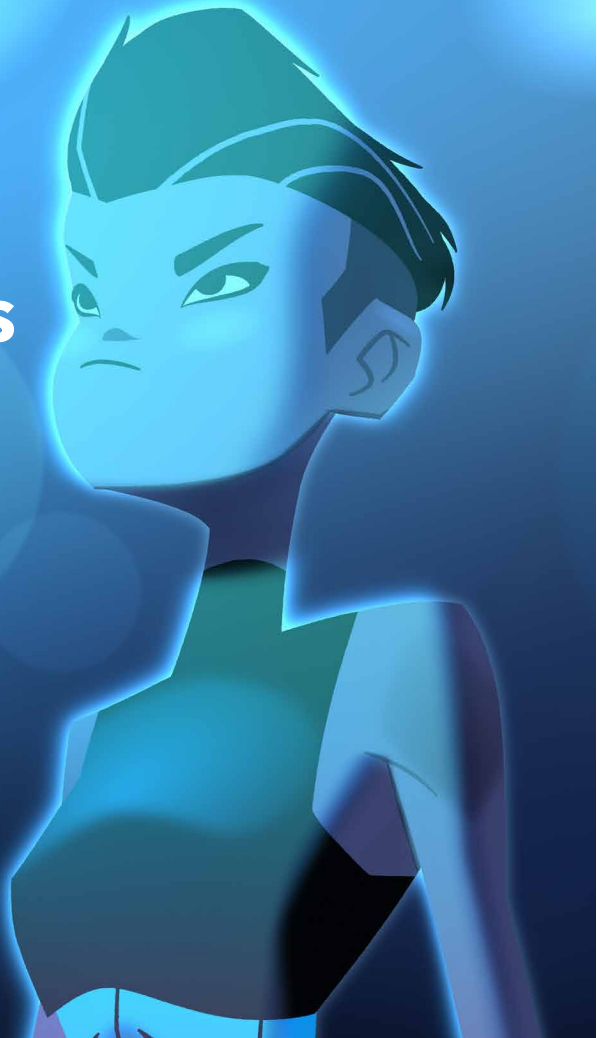


Harmony22 Essentials

Toon Boom Harmony22 Essentials

Keyboard Shortcuts Guide



TOON BOOM ANIMATION INC.
4200 St.Laurent Blvd, Suite 1020
Montreal, Quebec, Canada
H2W 2R2

+1 514 278 8666
contact@toonboom.com
toonboom.com

Legal Notices

Toon Boom Animation Inc.
4200 Saint-Laurent, Suite 1020
Montreal, Quebec, Canada
H2W 2R2

Tel: +1 514 278 8666

Fax: +1 514 278 2666

toonboom.com

Disclaimer

The content of this document is the property of Toon Boom Animation Inc. and is copyrighted. Any reproduction in whole or in part is strictly prohibited.

The content of this document is covered by a specific limited warranty and exclusions and limit of liability under the applicable License Agreement as supplemented by the special terms and conditions for Adobe® Flash® File Format (SWF). For details, refer to the License Agreement and to those special terms and conditions.

Trademarks

Toon Boom® is a registered trademark. Harmony™ and the Toon Boom logo are trademarks of Toon Boom Animation Inc. All other trademarks of the property of their respective owners.

Publication Date

09-23-2022

Copyright © 2022 Toon Boom Animation Inc., a Corus Entertainment Inc. company. All rights reserved.

Table of Contents

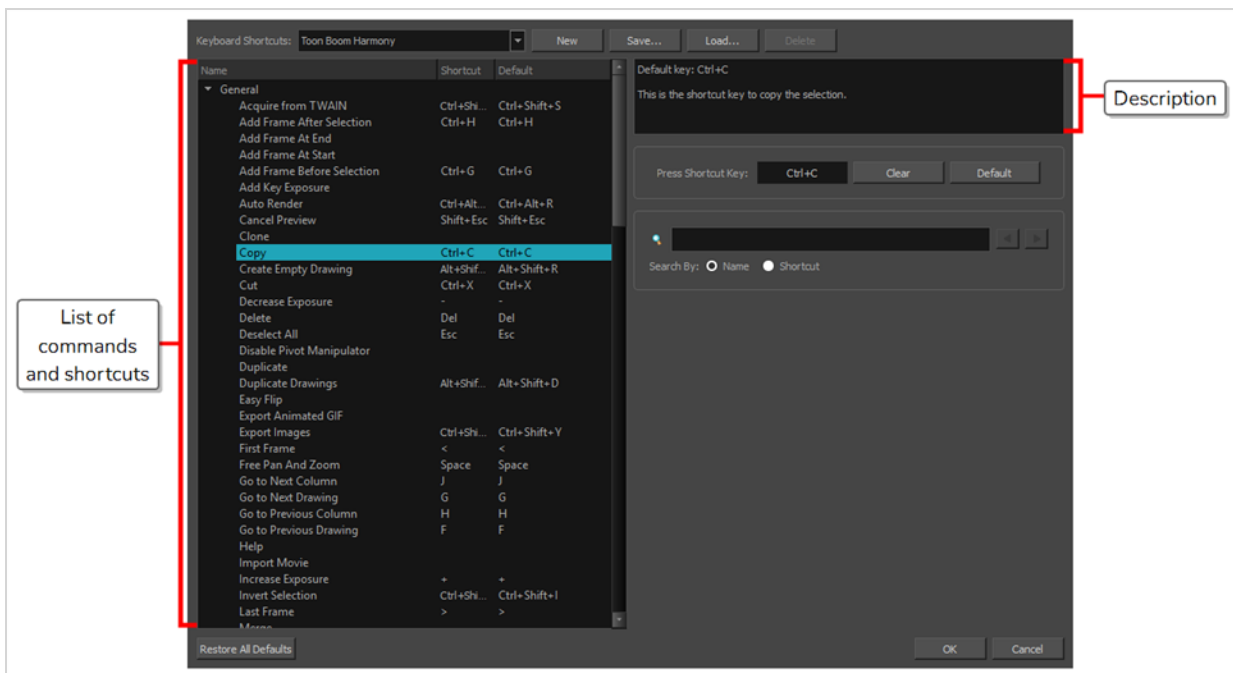
Table of Contents	2
About Keyboard Shortcuts	3
Accessing the Keyboard Shortcuts Dialog	4
About Keyboard Shortcut Sets	5
Switching Between Shortcut Sets	6
Creating a Keyboard Shortcut Set	7
Deleting a Keyboard Shortcut Set	8
Exporting Keyboard Shortcuts	9
Importing Keyboard Shortcuts	10
Searching for Keyboard Shortcuts	11
Customizing Keyboard Shortcuts	13
Resetting Keyboard Shortcuts	15
Default Keyboard Shortcuts	16
General Keyboard Shortcuts	17
Camera Keyboard Shortcuts	24
Timeline Keyboard Shortcuts	29
Exposure Sheet Keyboard Shortcuts	35
Drawing Mode Keyboard Shortcuts	39
Function Editor Keyboard Shortcuts	45
Library Keyboard Shortcuts	47
Gaming Keyboard Shortcuts	48
Guides Keyboard Shortcuts	49
Mini Playback Keyboard Shortcuts	50

About Keyboard Shortcuts

Harmony uses keyboard shortcuts to allow you to quickly use commands you are familiar with without having to browse through menus and toolbars. Learning the keyboard shortcuts for the commands you use the most often can be a great way to increase your productivity with Harmony.

Using the Keyboard Shortcuts dialog, you can:

- Check which keyboard shortcuts are assigned to which commands
- Search through commands and keyboard shortcuts
- Customize existing keyboard shortcuts
- Assign keyboard shortcuts to commands that don't have any
- Save keyboard shortcuts as presets
- Switch between keyboard shortcut presets
- Export and import keyboard shortcut configurations



Accessing the Keyboard Shortcuts Dialog

You can access the Keyboard Shortcuts dialog from the **Edit** menu on Windows or from the **Harmony Essentials** menu on macOS. The Keyboard Shortcuts menu item is just below the Preferences menu item.

How to open the Keyboard Shortcuts dialog box

1. Do one of the following:
 - **Windows:** In the top menu, select **Edit > Keyboard Shortcuts**.
 - **macOS:** In the top menu, select **Harmony Essentials > Keyboard Shortcuts**.

About Keyboard Shortcut Sets

Harmony comes preloaded with different sets of keyboard shortcut configurations:

- **Toon Boom Harmony:** The default keyboard shortcuts for Harmony. When the Harmony documentation refers to a specific keyboard shortcut, it refers to the keyboard shortcuts in this preset.
- **Adobe Flash:** A preset that likens the default keyboard shortcut configuration in the Adobe Animate software.
- **Toon Boom Studio:** A preset that likens the default keyboard shortcut configuration for Toon Boom Studio, a legacy Toon Boom software.

You can quickly switch between keyboard shortcut sets in the Keyboard Shortcuts dialog. You can also create your own keyboard shortcut sets. Keyboard shortcut sets can be saved directly to your preferences, along with the shortcut presets that are preloaded in Harmony. They can also be exported as XML files and imported later or shared with other users.

Switching Between Shortcut Sets

You can instantly switch from one keyboard shortcut set to another in the Keyboard Shortcuts dialog.

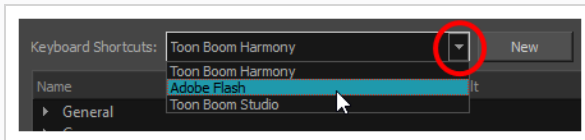


NOTE

Switching to a different keyboard shortcut set will not discard your current keyboard shortcut configuration. Your keyboard shortcut configuration is saved to the currently selected keyboard shortcut set. Hence, you can return to your old configuration simply by switching back to the previously used keyboard shortcut set.

How to switch between keyboard shortcut sets

1. Do one of the following to open the Keyboard Shortcuts dialog:
 - **Windows:** In the top menu, select **Edit > Keyboard Shortcuts**.
 - **macOS:** In the top menu, select **Harmony Essentials > Keyboard Shortcuts**.
2. In the top-left corner of the Keyboard Shortcuts dialog, open the **Keyboard Shortcuts:** drop-down and select the preset you want to use.



3. Click on **OK**.

Creating a Keyboard Shortcut Set

You can create your own keyboard short cut sets and add them to the **Keyboard Shortcuts:** drop-down menu of the Keyboard Shortcuts dialog.

How to create a keyboard shortcut set

1. Do one of the following to open the Keyboard Shortcuts dialog:
 - **Windows:** In the top menu, select **Edit > Keyboard Shortcuts**.
 - **macOS:** In the top menu, select **Harmony Essentials > Keyboard Shortcuts**.
2. In the list of commands and keyboard shortcuts, configure each keyboard shortcut the way you want them in your preset.
3. Near the top of the Keyboard Shortcuts dialog, click on the **New** button.
4. In the Keyboard Shortcut Set dialog, type in a name for your keyboard shortcut preset.
5. Click **OK**.

The keyboard shortcut set is now in the **Keyboard Shortcuts:** drop-down. Selecting it will load the keyboard shortcuts configuration you had when you created it.

Deleting a Keyboard Shortcut Set

You can delete a custom keyboard shortcut set from the **Keyboard Shortcuts:** drop-down in the Keyboard Shortcuts dialog.



NOTE

You can only delete custom keyboard shortcut sets that you created or imported. You cannot delete the keyboard shortcut sets that are preloaded with Harmony.

How to delete a keyboard shortcut set

1. Do one of the following to open the Keyboard Shortcuts dialog:
 - **Windows:** In the top menu, select **Edit > Keyboard Shortcuts**.
 - **macOS:** In the top menu, select **Harmony Essentials > Keyboard Shortcuts**.
2. In the **Keyboard Shortcuts:** drop-down, select the keyboard shortcut set that you want to delete.
3. At the right of the **Keyboard Shortcuts:** drop-down, click on the **Delete** button.
A confirmation prompt appears.
4. If you are sure you want to delete the selected keyboard shortcut set, click on **Yes**.
The selected keyboard shortcut set is removed from the **Keyboard Shortcuts:** drop-down.

Exporting Keyboard Shortcuts

You can export your current keyboard shortcut configuration into an XML file. You can reimport this file later to restore your configuration, or share it with project collaborators so that you all use the same keyboard shortcuts.



NOTE

When you export your keyboard shortcuts configuration, only the currently selected keyboard shortcuts set is exported.

How to export your keyboard shortcut configuration

1. Do one of the following to open the Keyboard Shortcuts dialog:
 - **Windows:** In the top menu, select **Edit > Keyboard Shortcuts**.
 - **macOS:** In the top menu, select **Harmony Essentials > Keyboard Shortcuts**.
2. In the **Keyboard Shortcuts:** drop-down, make sure the keyboard shortcut set you want to export is selected.
3. At the right of the **Keyboard Shortcuts:** drop-down, click on the **Save...** button.
A save dialog appears.
4. Browse to the location where you want to save your keyboard shortcut file.
5. Type in the desired name for your keyboard shortcut file.
6. Click on **Save**.

The currently keyboard shortcut set has been exported as an XML file, in the selected location with the file name you gave it.

Importing Keyboard Shortcuts

You can import a keyboard shortcut configuration file exported from Harmony.



NOTES

- To export keyboard shortcuts into a file, see [Exporting Keyboard Shortcuts on page 9](#).
- When you import a keyboard shortcuts file, it is added to the list of keyboard shortcut sets in the Keyboard Shortcuts drop-down menu of the Keyboard Shortcuts dialog.

How to import a keyboard shortcut configuration file

1. Do one of the following to open the Keyboard Shortcuts dialog:
 - **Windows:** In the top menu, select **Edit > Keyboard Shortcuts**.
 - **macOS:** In the top menu, select **Harmony Essentials > Keyboard Shortcuts**.
2. At the right of the **Keyboard Shortcuts:** drop-down, click on the **Load...** button.
An open dialog appears.
3. Browse to the directory where your keyboard shortcut file is located.
4. Select the keyboard shortcut file you want to import.
5. Click on **Open**.

The configuration selected keyboard shortcut file is loaded into the Keyboard Shortcuts dialog, and is added as a keyboard shortcut set in the **Keyboard Shortcuts:** drop-down menu.

Searching for Keyboard Shortcuts

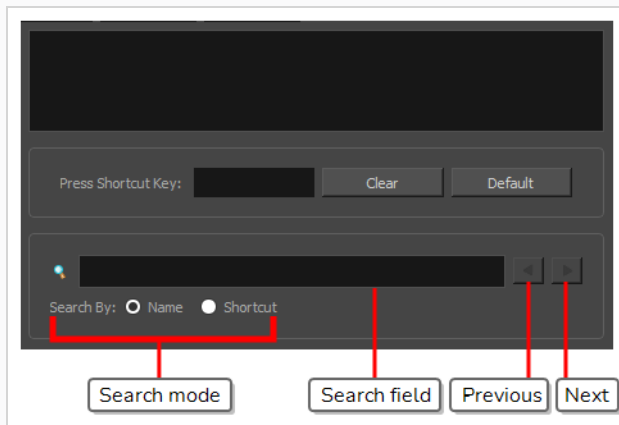
Harmony has a very extensive list of commands that can be assigned to keyboard shortcuts. Using the Search bar in the Keyboard Shortcuts dialog, you can:


- Search for a command, and its keyboard shortcut, by typing part or all of its name.
- Search for a command by typing part or all of its currently assigned keyboard shortcut.

How to search for a keyboard shortcut


1. Do one of the following to open the Keyboard Shortcuts dialog:

- **Windows:** In the top menu, select **Edit > Keyboard Shortcuts**.
- **macOS:** In the top menu, select **Harmony Essentials > Keyboard Shortcuts**.



1. Below the  Search field, select the type of search you want to perform:

- **Name:** To search a command by typing part or all of its name.
- **Shortcut:** To search a command by typing part or all of its currently assigned keyboard shortcut.

2. In the  Search field, type in either part of the name of the command you want to find, or part of its currently assigned keyboard shortcut, depending on which option you chose in the previous step.



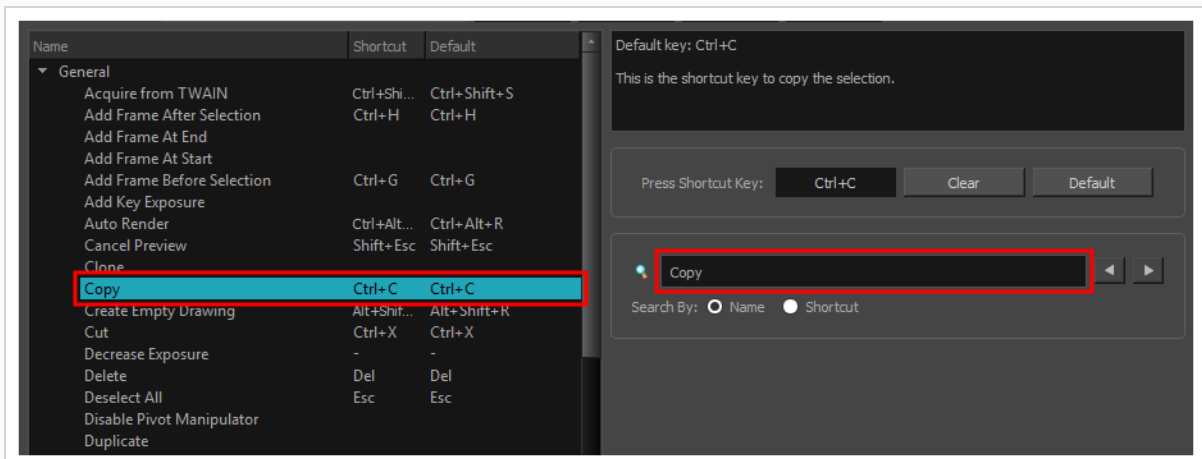
NOTES

- When searching for a command by its keyboard shortcut, if the keyboard shortcut is a combination, make sure that:
 - Modifier keys (Ctrl, Alt and Shift) are typed before other keys.
 - Join the keys by a + sign, with no space around it.

For example, to search for the **Copy** command, type **Ctrl+C**.

- On macOS, modifier keys such as Command (⌘), Control (^), Alt (⌥) and Shift (⇧) are represented by specific symbols that cannot be typed with a standard keyboard. You can copy and paste them from this document into the search field if you are reading this on a computer.

Harmony will immediately select the first command in the list that matches your search query.



3. If your query matches several commands in the list, uses the ◀ Previous and ▶ Next button right of the 🔍 Search field to navigate between matching commands.

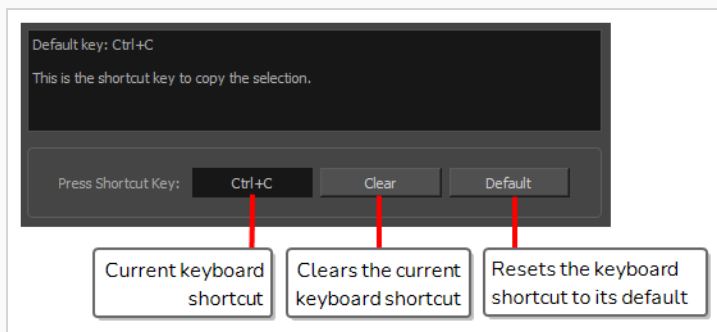
Customizing Keyboard Shortcuts

You can create your own keyboard shortcut for a tool or command, by assigning it to a certain key or combination of keys.

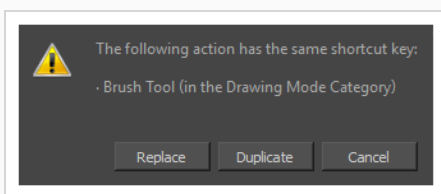
How to customize a keyboard shortcut

1. Do one of the following to open the Keyboard Shortcuts dialog:
 - **Windows:** In the top menu, select **Edit > Keyboard Shortcuts**.
 - **macOS:** In the top menu, select **Harmony Essentials > Keyboard Shortcuts**.
2. In the list of commands and shortcuts to the left, locate and select the command for which you want to assign a keyboard shortcut—see [Searching for Keyboard Shortcuts](#).

The description of the selected command, as well as its currently assigned shortcut, appear in the right pane.



3. Do one of the following:
 - If you want to assign a custom shortcut to the selected command, click inside the box just right of **Press Shortcut Key:**.
 - If you want the selected command to have no keyboard shortcut, click on **Clear**.
 - If you want the selected command to be assigned to its default keyboard shortcut, click on **Default**.
4. If you are assigning a custom keyboard shortcut to the selected command, using your keyboard, type in the keyboard shortcut you want to use in the **Press Shortcut Key:** field.
5. If the keyboard shortcut you typed in is already in use by another command, a dialog box will prompt you to decide what to do.



If this occurs, choose one the following options depending on what suits your case better:

- **Replace:** This will unassign the keyboard shortcut from the commands listed in the dialog box, and assign it to the selected command.
- **Duplicate:** Assigns the keyboard shortcut to the selected command, and lets other commands use the same keyboard shortcut.



IMPORTANT

Having several commands share the same keyboard shortcut could cause undesired behaviour.

- **Cancel:** Allows you to attempt assigning a different keyboard shortcut to the selected command.

Resetting Keyboard Shortcuts

You can reset the configuration of your keyboard shortcuts to the default values for the selected keyboard shortcut set.



IMPORTANT

This will replace your current keyboard shortcut configuration and discard any custom keyboard shortcut you created.

How to reset your keyboard shortcuts configuration

1. Do one of the following to open the Keyboard Shortcuts dialog:
 - **Windows:** In the top menu, select **Edit > Keyboard Shortcuts**.
 - **macOS:** In the top menu, select **Harmony Essentials > Keyboard Shortcuts**.
2. In the **Keyboard Shortcuts:** drop-down, make sure the keyboard shortcut set that you want to restore to its default configuration is selected.
3. In the bottom-left corner of the Keyboard Shortcuts dialog, click on **Restore All Defaults**.
A confirmation prompt appears.
4. If you are sure you want to restore the default keyboard shortcut configuration for the selected keyboard shortcut set, click on **Yes**.

All the commands in the list are now set to their default keyboard shortcut.

Default Keyboard Shortcuts

The following section lists all of the default keyboard shortcuts for Harmony.

To make it easier to search for specific keyboard shortcuts, the shortcuts have been divided and grouped into sections.

General Keyboard Shortcuts	17
Camera Keyboard Shortcuts	24
Timeline Keyboard Shortcuts	29
Exposure Sheet Keyboard Shortcuts	35
Drawing Mode Keyboard Shortcuts	39
Function Editor Keyboard Shortcuts	45
Library Keyboard Shortcuts	47
Gaming Keyboard Shortcuts	48
Guides Keyboard Shortcuts	49
Mini Playback Keyboard Shortcuts	50

General Keyboard Shortcuts

Command	Description	Windows	macOS	My Shortcut
Acquire from TWAIN	This is the shortcut key to scan a drawing with a TWAIN device.	Ctrl + Shift + S	Shift + ⌘ + S	
Add Frame After Selection	The shortcut key to display the Add Frame After Selection dialog box in the Xsheet View .	Ctrl + H	Ctrl + H	
Add Frame At End	The shortcut key to display the Add Frame At Bottom dialog box in the Xsheet View .			
Add Frame At Start	The shortcut key to display the Add Frame At Top dialog box in the Xsheet View .			
Add Frame Before Selection	The shortcut key to display the Add Frame Before Selection dialog box in the Xsheet View .	Ctrl + G	⌘ + G	
Add Key Exposure	Add a drawing key exposure.			
Advanced Save	This is the shortcut to open the Advanced Save dialog box. This dialog box is used to save specific parts of a scene (scene data, palette lists, palettes and drawings).	Ctrl + Shift + S	Shift + ⌘ + S	
Auto Render	This is the shortcut key to render frames automatically.	Ctrl + Alt + R	⌘ + Alt + R	
Cancel Preview	This is the shortcut key to cancel the automatic preview .	Shift + Esc	Shift + Esc	

Command	Description	Windows	macOS	My Shortcut
Clone	The shortcut key to main Edit->Clone			
Copy	This is the shortcut key to copy the selection.	Ctrl + C	⌘ + C	
Create Empty Drawing	This is the shortcut key used to replace selected drawings by new drawings.	Alt + Shift + R	Alt + Shift + R	
Cut	This is the shortcut key to cut the selection.	Ctrl + X	⌘ + X	
Decrease Exposure	Removes one frame from the exposure of a timed value.	-	-	
Delete	This is the shortcut key to delete the selection.	Del	Backspace	
Deselect All	This is the shortcut key to deselect all selected objects.	Esc	Esc	
Disable Pivot Manipulator	When activated, the pivot point cannot be changed position visually.			
Duplicate	The shortcut key to main Edit->Duplicate.			
Duplicate Drawings	This is the shortcut key used to replace selected drawings by a copy of the drawing.	Alt + Shift + D	Alt + Shift + D	
Easy Flip	This is the shortcut key to execute a single flip in the Drawing view .			
Export Animated GIF	Use this shortcut to open the Export Animated GIF window .			

Command	Description	Windows	macOS	My Shortcut
Export Images	Opens the Export Images dialog box which you can use to save rendered frames to file.	Ctrl + Shift + Y	Ctrl + Shift + Y	
First Frame	This is the shortcut key to go to the first frame.	<	<	
Free Pan and Zoom	This is the shortcut key to pan and zoom the current view .	Space	Space	
Go to Next Column	Go to Next Column	J	J	
Go to Next Drawing	Go to Next Drawing	G	G	
Go to Previous Column	Go to Previous Column	H	H	
Go to Previous Drawing	Go to Previous Drawing	F	F	
Help	This is the shortcut to the Online Help			
Import Movie	Import QuickTime movie to the scene			
Increase Exposure	Adds one frame to the exposure of a timed value.	+	+	
Invert Selection	This is the shortcut key to invert the selection in the current view .	Ctrl + Shift + I	Shift + ⌘ + I	
Last Frame	This is the shortcut key to go to the last frame.	>	>	

Command	Description	Windows	macOS	My Shortcut
Merge	The shortcut key to main Edit->Merge			
Mirror View	This is the shortcut key to mirror the view horizontally.			
New	This is the shortcut to create a new scene.	Ctrl + N	⌘ + N	
Next Frame	This is the shortcut key to go to the next frame.	period (.)	period (.)	
Open	This is the shortcut to open a scene or open drawings in paint mode.	Ctrl + O	⌘ + O	
Paste	This is the shortcut key to paste the clipboard contents to the scene.	Ctrl + V	⌘ + V	
Paste Cycle	This is the shortcut key to paste the clipboard contents to the scene in cycles.	Ctrl + /	⌘ + /	
Paste Reverse	This is the shortcut key to paste the clipboard contents to the scene in reverse.	Ctrl + .	Ctrl + .	
Paste Special	This is the shortcut key to paste the clipboard contents to the scene.	Ctrl + B	⌘ + B	
Paste Special Again	This is the shortcut key to paste the clipboard contents to the scene.	Ctrl + Shift + B	⌘ + Shift + B	
Peg Selection Mode	This is the shortcut key to toggle the peg selection mode for the transform tool.			

Command	Description	Windows	macOS	My Shortcut
Preferences	Launches the preferences dialog.	Ctrl + U	⌘ + U	
Previous Frame	This is the shortcut key to go to the previous frame.	comma (,)	comma (,)	
Quick Close-up	This toggles between a global view and a close-up view.	Shift + Z	Shift + Z	
Recentre	This is the shortcut key to recentre the view on the mouse pointer in the current view.	N	N	
Redo	This is the shortcut key to redo the an operation that was undone.	Ctrl + Shift + Z	Ctrl + Shift + Z	
Remove Key Exposure	Remove a drawing key exposure.			
Rename Drawings	This is the shortcut key used to rename selected drawing.	Ctrl + D	⌘ + D	
Render and Play	This is the shortcut key to render and preview your scene in the Player module.			
Reset Pan	This is the shortcut key to recentre the current view.	Shift + N	Shift + N	
Reset Rotation	This is the shortcut to reset the rotation of the current view.	Shift + X	Shift + X	
Reset View	This is the shortcut key to reset the pan, the zoom and the rotation in the current view.	Shift + M	Shift + M	

Command	Description	Windows	macOS	My Shortcut
Reset Zoom	This is the shortcut key to reset the zoom level of the current view .			
Rotate View CCW	This is the shortcut key to rotate the view counter clock-wise.			
Rotate View CW	This is the shortcut key to rotate the view clock-wise.			
Save	This is the shortcut to save everything in a scene (scene data, palette lists, palettes and drawings).	Ctrl + S	⌘ + S	
Select All	This is the shortcut key to select everything in the current view .	Ctrl + A	⌘ + A	
Select Child	Select Child.	Shift + B	Shift + B	
Select Parent	Select Parent.	B	B	
Shortcuts	Launches the shortcuts dialog.			
Test SW F Movie	This is the shortcut key to render and preview your scene in a Flash movie.			
Toggle Full Screen	This is the shortcut key to toggle the full screen display mode.	Ctrl + F	⌘ + F	
Toggle Playback	This is the shortcut key to playback frames in Sceneplanning views. It is invoked on keyRelease.	Shift + Return	Shift + Return	

Command	Description	Windows	macOS	My Shortcut
Undo	This is the shortcut key to undo the previous operation.	Ctrl + Z	⌘ + Z	
Zoom In	This is the shortcut key to zoom-in the current view.	2	2	
Zoom Out	This is the shortcut key to zoom-out the current view.	1	1	

Camera Keyboard Shortcuts

Command	Description	Windows	macOS	My Shortcut
Add All to Onion Skin	Show all nodes in the onion skins.	Alt + Shift + O	Alt + Shift + O	
Add to Onion Skin	Show the selected nodes and their children in the onion skins.	Shift + S	Shift + S	
Animate Current Frame	Automatically creates keyframes at the current frame when using the Transform or Advanced Animation tools.			
Animate Off	All modifications done with an animation tool are applied across the entire scene duration.			
Animate Onion Skin Range	Modify existing keyframes in the frame range defined by the onion skin. Keyframes will be added at the first and last frames of this range if none are present.			
Bitmap Image Quality	This is the shortcut to set the small pixmap files image quality	Ctrl + Q	⌘ + Q	
Centre on Selection	This shortcut centres the timeline's layer list on the current selection.	Shift + O	Shift + O	
Clear Alignment Guides	Clear all alignment guides			
Create Symbol	Create Symbol	F8	F8	

Command	Description	Windows	macOS	My Shortcut
Distribute to Layers	Distribute all contours and groups of current drawings in separate layers			
Duplicate Symbol	Duplicate Selected Symbol			
Enable Aligment Guides	Enable Alignment Guides			
Enable/Disable Playback	This is the shortcut to turn on/off the ability to playback frames in the Top, Side or Free View .			
Enter Selected Symbol	Enter Selected Symbol	Ctrl + E	⌘ + E	
Expand Symbol	Expand Symbol	Shift + F8	Shift + F8	
Flip Horizontal	This is the shortcut key to flip the selection horizontally.	4	4	
Flip Scale X	This is the shortcut key to flip the X axis scaling of the selection.			
Flip Scale Y	This is the shortcut key to flip the Y axis scaling of the selection.			
Flip Vertical	This is the shortcut key to flip the the selection vertically.	5	5	
Hide All Control Parameters	This is the shortcut to hide all controls in Sceneplanning views.	Shift + C	Shift + C	

Command	Description	Windows	macOS	My Shortcut
Insert Control Point	This is the shortcut to insert a new control point in the currently selected 3D path.	P	P	
Insert Keyframe	This is the shortcut to insert a key frame in the currently selected layers.	F6	F6	
Lock Alignment Guides	Lock the alignment guides			
Lock All	Lock all.	Ctrl + Shift + L	⌘ + Shift + L	
Lock All Others	Lock all others.	Ctrl + Alt + Shift + O	⌘ + Alt + Shift + O	
Lock Selection	Lock the selection so it cannot be selected from the Sceneplanning views.	Ctrl + Alt + L	⌘ + Alt + L	
Maintain Size Tool	This is the shortcut for the "Maintain Size" tool in Sceneplanning views. This tool is only useful in the Side View or Top View.	Alt + 6	Alt + 6	
New Horizontal Alignment Guide	Create a new horizontal alignment guide			
New Vertical Alignment Guide	Create new vertical alignment guide			
Remove All Onion Skin	Hide all elements from the onion skins	Ctrl + Shift + O	⌘ + Shift + O	
Remove Unselected from Onion Skin	Hide from the onion skins elements that are not selected			

Command	Description	Windows	macOS	My Shortcut
Reset All Transformations	This is the shortcut key to reset all transformations on the selected element	Shift + R	Shift + R	
Reset Transformation	This is the shortcut key to reset transformation on the selected element.	R	R	
Return To Parent Symbol	Return to Parent Symbol	Ctrl + Shift + E	⌘ + Shift + E	
Rotate Tool	This is the shortcut for the Rotate tool in Sceneplanning views.	Alt + 3	Alt + 3	
Scale Tool	This is the shortcut for the Scale tool in Sceneplanning views.	Alt + 4	Alt + 4	
Show Alignment Guides	Show Alignment Guides			
Show Snapshot	This shortcut temporarily displays the last snapshot taken in the Camera View.			
Show/Hide Control Parameters	This is the shortcut to display the controls (either the spline of a peg or the handles on a quadmap) of the selected node in Sceneplanning views.	Shift + F11	⌘ + F11	
Skew Tool	This is the shortcut for the Skew tool in Sceneplanning views.	Alt + 5	Alt + 5	
Spline Offset Tool	This is the shortcut for the "Spline Offset" tool in Sceneplanning views.	Alt + 8	Alt + 8	

Command	Description	Windows	macOS	My Shortcut
Substitute Drawing Next	This is the shortcut key to change the exposed drawing to the next one.]]	
Substitute Drawing Previous	This is the shortcut key to change the exposed drawing to the previous one.	[[
Take Snapshot	This shortcut takes a snapshot of the camera view content.			
Transform Tool	This is the shortcut for the "Transform Tool" tool in the cameraview .	Shift + T	Shift + T	
Translate Tool	This is the shortcut for the Translate tool in Sceneplanning views.	Alt + 2	Alt + 2	
Unlock All	Unlock all.	Ctrl + Alt + Shift + L	⌘ + Alt + Shift + L	
Unlock Selection	Unlock selection.	Ctrl + Shift + K	⌘ + Shift + K	

Timeline Keyboard Shortcuts

Command	Description	Windows	macOS	My Shortcut
Centre On Selection	This shortcut centres the timeline's layer list on the current selection.	O	O	
Clear Exposure	Clear exposure.			
Clear Exposure and Pull	The shortcut key to clear the current frames in the timeline.			
Collapse All Layers	This shortcut collapses all layers.	0	0	
Collapse or Expand a Layer	This shortcut collapses or expands a layer.	Ctrl + I	⌘ + I	
Create Scene Marker	Create a Scene Marker at the current timeline ruler selection.			
Delete Keyframe	The shortcut key to clear keyframes in the currently selected layers.	F7	F7	
Disable All Other Layers	This shortcut disables all layers except the currently selected one.			
Disable Layers	This shortcut disables layers.	D	D	
Enable All Layers	This shortcut enables all layers.			
Enable Layers	This shortcut enables layers.	A	A	

Command	Description	Windows	macOS	My Shortcut
Expand All Layers	This shortcut expands all layers.	9	9	
Extend Exposure	Extend Exposure	F5	F5	
Flip Horizontal	Horizontal flip of the selected frames			
Flip Vertical	Vertical flip of the selected frames			
Go to Next Blue Frame Mark	Go to Next Blue Frame Mark			
Go to Next Cyan Frame Mark	Go to Next Cyan Frame Mark			
Go to Next Frame Mark	Go to Next Frame Mark			
Go to Next Global Frame	Go to next frame in the top scene	Ctrl + Shift + C	⌘ + Shift + C	
Go to Next Green Frame Mark	Go to Next Green Frame Mark			
Go to Next Keyframe	Go to Next Keyframe	'	'	
Go to Next Orange Frame Mark	Go to Next Orange Frame Mark			
Go to Next Pink Frame Mark	Go to Next Pink Frame Mark			
Go to Next Purple Frame Mark	Go to Next Purple Frame Mark			
Go to Next Red	Go to Next Red Frame Mark			

Command	Description	Windows	macOS	My Shortcut
Frame Mark				
Go to Next White Frame Mark	Go to Next White Frame Mark			
Go to Next Yellow Frame Mark	Go to Next Yellow Frame Mark			
Go to Previous Blue Frame Mark	Go to Previous Blue Frame Mark			
Go to Previous Cyan Frame Mark	Go to Previous Cyan Frame Mark			
Go to Previous Frame Mark	Go to Previous Frame Mark			
Go to Previous Global Frame	Go to previous frame in the top scene	Ctrl + Shift + X	⌘ + Shift + X	
Go to Previous Green Frame Mark	Go to Previous Green Frame Mark			
Go to Previous Keyframe	Go to Previous Keyframe	semicolon (;)	semicolon (;)	
Go to Previous Orange Frame Mark	Go to Previous Orange Frame Mark			
Go to Previous Pink Frame Mark	Go to Previous Pink Frame Mark			
Go to Previous Purple Frame Mark	Go to Previous Purple Frame Mark			
Go to Previous Red Frame Mark	Go to Previous Red Frame Mark			

Command	Description	Windows	macOS	My Shortcut
Go to Previous White Frame Mark	Go to Previous White Frame Mark			
Go to Previous Yellow Frame Mark	Go to Previous Yellow Frame Mark			
Hide All Thumbnails	This shortcut hide thumbnails of all layers.			
Insert Blank Frame	The shortcut key to insert a blank frame in the timeline.	Shift + J	Shift + J	
Insert Camera	This shortcut adds a Camera.			
Insert Drawing	This shortcut adds a Drawing.	Ctrl + R	⌘ + R	
Insert Keyframe	This shortcut adds a Keyframe	F6	F6	
Insert Keyframe and Duplicate Drawings	This shortcut adds a Keyframe and Duplicate Drawings			
Insert Peg	This shortcut adds a Peg.	Ctrl + P	⌘ + P	
Insert Sound	This shortcut adds a Sound.			
Lock All	Lock all.	Ctrl + Shift + L	⌘ + Shift + L	
Lock All Others	Lock all others.	Ctrl + Alt + Shift + O	⌘ + Alt + Shift + O	
Lock Selection	Lock the selection so it cannot be selected from the Sceneplanning view s.	Ctrl + Alt + L	⌘ + Alt + L	

Command	Description	Windows	macOS	My Shortcut
Remove Frame Marker	This is the shortcut to remove a frame marker from the currently selected layers.			
Select Children	Select children.			
Set Exposure	Set Exposure			
Set Exposure to 1	Set Exposure to 1			
Set Exposure to 2	Set Exposure to 2			
Set Exposure to 3	Set Exposure to 3			
Set Motion Keyframe	Set Non Constant Keyframe	Ctrl + K	⌘ + K	
Set Stop-Motion Keyframe	Set Constant Keyframe	Ctrl + L	⌘ + L	
Show All Thumbnails	This shortcut show thumbnails of all layers.			
Show or Hide Thumbnails	This shortcut show or hide thumbnails of a layer.	T	T	
Show/Hide Functions	Show/Hide functions.	Alt + F	Alt + F	
Substitute Drawing Next	This is the shortcut key to change the exposed drawing to the next one.]]	
Substitute Drawing Previous	This is the shortcut key to change the exposed drawing to the previous one.	[[

Command	Description	Windows	macOS	My Shortcut
Toggle Solo Mode	Toggle Solo Mode On and Off			
Unlock All	Unlock all.	Ctrl + Alt + Shift + L	⌘ + Alt + Shift + L	
Unlock Selection	Unlock selection.	Ctrl + Shift + K	⌘ + Shift + K	

Exposure Sheet Keyboard Shortcuts

Command	Description	Windows	macOS	My Shortcut
Add Columns	The shortcut key to display the Add Column dialog box in the Xsheet View .	Shift + C	Shift + C	
Add Drawing Column	The shortcut key to add a drawing column in the Xsheet View .	Ctrl + R	⌘ + R	
Clear Exposure and Pull	The shortcut key to clear the current frames in insert mode in the Xsheet View .			
Clear Selected Cells	The shortcut key to clear the selected cell in the Xsheet View .			
Clone Selected Columns: Drawings Only	The shortcut key to clone the drawing columns in the current selection of the Xsheet View .			
Collapse	The shortcut key to Collapse column groups in the Xsheet View .			
Collapse All	The shortcut key to Collapse all column groups in the Xsheet View .	0	0	
Delete Selected Columns	This is the shortcut key used to delete selected columns.			
Delete Selected Drawings	This is the shortcut key used to delete selected drawings.			

Command	Description	Windows	macOS	My Shortcut
Duplicate Selected Columns	The shortcut key to duplicate the drawing columns in the current selection of the Xsheet View.			
Enable/Disable Playback	This is the shortcut to turn on/off the highlight of the current frame during playback in the Xsheet View.			
Expand	The shortcut key used to Expand column groups in the Xsheet View.			
Expand All	The shortcut key to Expand all column groups in the Xsheet View.	9	9	
Fill Selection	The shortcut key to display the Fill dialog in the Xsheet View.	Ctrl + T	⌘ + T	
Hide Selected Column	The shortcut key to hide selected columns in the Xsheet View.	Alt + H	Alt + H	
Insert Blank Cell	The shortcut key to insert blank frames in insert mode in the Xsheet View.	Shift + J	Shift + J	
Insert Keyframe	The shortcut key to insert keyframes in the Xsheet View.	F6	F6	
Insert/Overwrite Mode	The shortcut key to switch between inserting and modifying cells in Drawings and Timing columns in the Xsheet	I	I	

Command	Description	Windows	macOS	My Shortcut
	View .			
Remove Frames	This is the shortcut key used to remove selected frames.			
Sequence Fill	The shortcut key to display the Columnate dialog box in the Xsheet View .	Ctrl + M	⌘ + M	
Set Custom Hold Cell	Set Custom Hold Cell			
Set Hold 1 Cell	Set Hold 1 Cell	Ctrl + 1	⌘ + 1	
Set Hold 2 Cells	Set Hold 2 Cells	Ctrl + 2	⌘ + 2	
Set Hold 3 Cells	Set Hold 3 Cells	Ctrl + 3	⌘ + 3	
Set Hold 4 Cells	Set Hold 4 Cells	Ctrl + 4	⌘ + 4	
Show Column Types	The shortcut key to display the Show Columns dialog in the Xsheet View			
Show Hidden Columns	The shortcut key to display the Show Column dialog box in the Xsheet View .	Alt + Shift + H	Alt + Shift + H	
Thumbnails	The shortcut key to toggle the displaying of Thumbnails in the Xsheet View			
Zoom Extents	This is the shortcut key to set the zoom level to show all contents of the			

Command	Description	Windows	macOS	My Shortcut
	Xsheet View.			

Drawing Mode Keyboard Shortcuts

Command	Description	Windows	macOS	My Shortcut
Automatically Fill Inside Regions	Automatically fill drawing shapes.	Ctrl + Shift + R	⌘ + Shift + R	
Bring Forward	Bring the selected drawing element one step forward.	Ctrl + PgUp	⌘ + PgUp	
Bring To Front	Bring the selected drawing element to the front.	Ctrl + Shift + PgUp	⌘ + Shift + PgUp	
Brush Tool	Activate the Brush Tool in Brush Mode.	Alt + B	Alt + B	
Brush Tool (General)	Activate the Brush Tool.			
Centerline Editor Tool	Activate the Centerline Editor Tool.	Alt + W	Alt + W	
Close Gap Tool	Activate the Close Gap Tool.	Alt + C	Alt + C	
Colour Eyedropper Tool	Activate the Colour Eyedropper Tool.	Alt + D	Alt + D	
Contour Editor Tool	Activate the Contour Editor Tool.	Alt + Q	Alt + Q	
Convert Brush Strokes to Pencil Lines	Convert Brush to Pencil.	^	^	
Convert Pencil Lines to Brush Strokes	Convert Pencil Lines to Brush.	&	&	
Cutter Tool	Activate the Cutter Tool.	Alt + T	Alt + T	

Command	Description	Windows	macOS	My Shortcut
Cycle Through Flatten Drawing Modes	This shortcut cycles through the different drawing modes: Normal, Flatten Latest and Auto Flatten			
Decrement Brush Size	Decrement Brush Size.			
Draw Behind	Toggle the Draw Behind mode for the current tool.			
Edit Texture/Gradient Tool	Activate the Edit Texture/Gradient Tool	Shift + F3	Shift + F3	
Ellipse Tool	Activate the Ellipse Tool.	Alt + =	Alt + =	
Eraser Tool	Activate the Eraser Tool.	Alt + E	Alt + E	
Flatten	Flatten.	Alt + Shift + F	Alt + Shift + F	
Flip Horizontal	This is the shortcut key to flip horizontally drawing objects in Drawing mode.			
Flip Vertical	This is the shortcut key to flip vertically drawing objects in Drawing mode.			
Group	This is the shortcut key to group drawing objects in Drawing mode	Ctrl + G	⌘ + G	
Hand Tool	Activate the Hand Tool.			
Increment Brush Size	Increment Brush Size.			
Light Table	The shortcut key that activates the Auto Light Table command.	Shift + L	Shift + L	

Command	Description	Windows	macOS	My Shortcut
Line Tool	Activate the Line Tool.	Alt + \	Alt + \	
Onion Skin: Add 1 Next	The shortcut key that activates the Add One Next Drawing command for the onion skin.			
Onion Skin: Add 1 Previous	The shortcut key that activates the Add One Previous Drawing command for the onion skin.			
Onion Skin: Reduce 1 Next	The shortcut key that activates the Reduce One Next Drawing command for the onion skin.			
Onion Skin: Reduce 1 Previous	The shortcut key that activates the Reduce One Previous Drawing command for the onion skin.			
Paint Tool	Activate the Paint Tool.	Alt + I	Alt + I	
Paint Tool (General)	Activate the Paint Tool without changing its mode.			
Paint Unpainted Tool	Activate the Paint Tool in Paint Unpainted Mode.	Alt+Y	Alt+Y	
Pencil Tool	Activate the Pencil Tool.	Alt + /	Alt + /	
Perspective Tool	This is the shortcut for the drawing perspective tool.	Alt + 0	Alt + 0	
Polyline Tool	Activate the Polyline Tool.	Alt + _	Alt + _	

Command	Description	Windows	macOS	My Shortcut
Rectangle Tool	Activate the Rectangle Tool.	Alt + 7	Alt + 7	
Repaint Brush Tool	Activate the Brush Tool in Repaint Mode.	Alt + X	Alt + X	
Resize Pencil Style Tool	This is the shortcut for the tool to resize pencil.	O	O	
Rotate 180	Rotate the drawing 180 degrees.			
Rotate 90 CCW	Rotate the drawing 90 degrees counterclockwise.	Ctrl + 7	⌘ + 7	
Rotate 90 CW	Rotate the drawing 90 degrees clockwise.	Ctrl + 9	⌘ + 9	
Rotate View Tool	Activate the Rotate View Tool.			
Select Strokes with Current Colour	This is the shortcut key to select all drawing objects in the active layer(s) of a drawing that are coloured with the current colour.	Ctrl + Shift + A	⌘ + Shift + A	
Select Strokes with Current Pencil Texture	This is the shortcut key to select all drawing objects in the active layer(s) of a drawing that use the current pencil texture.			
Select Tool	Activate the Select Tool.	Alt + S	Alt + S	
Send Backward	Send the selected drawing element one step backward.	Ctrl + PgDown	⌘ + PgDown	

Command	Description	Windows	macOS	My Shortcut
Send to Back	Send the selected drawing element to the back.	Ctrl + Shift + PgDown	⌘ + Shift + PgDown	
Show Grid	Show/hide the Drawing View grid by default.	Ctrl + '	⌘ + '	
Show Strokes	Shortcut key to the Show Strokes command.	K	K	
Show/Hide Contour Editor Controls	Show/Hide Rotation and Scale Controls	Alt+F5	Alt+F5	
Show/Hide Onion Skin	Toggles on and off the onion skin.	Alt + O	Alt + O	
Smooth	Smooth.	Alt + Shift + S	Alt + Shift + S	
Smooth Editor Tool	Activate the Smooth Editor Tool.			
Snap and Align	Use drawing bounding boxes for snapping and alignment.	Ctrl + Alt + ,	⌘ + Alt + ,	
Snap to Contour	Use drawing contours for snapping.	Ctrl + Alt + ;	⌘ + Alt + ;	
Snap to Grid	Snap drawings to the grid.	Ctrl + Alt + '	⌘ + Alt + '	
Stamp Tool	Activate the Stamp tool.			
Stroke Tool	Activate the Stroke Tool.	Alt + V	Alt + V	
Text Tool	Activate the Text Tool.	Alt + 9	Alt + 9	
Ungroup	This is the shortcut key to ungroup drawing objects	Ctrl + Shift + G	⌘ + Shift + G	

Command	Description	Windows	macOS	My Shortcut
	in Drawing mode			
Unpaint Tool	Activate the Paint Tool in Unpaint Mode.	Alt + U	Alt + U	
Zoom Tool	Activate Zoom Tool temporarily or permanently if pressed with ALT.	Alt + Z	Alt + Z	

Function Editor Keyboard Shortcuts

Command	Description	Windows	macOS	My Shortcut
Insert Point	In Function Editors, the shortcut key to insert a point.	I	I	
Lock/Unlock Point	In Function Editors, this shortcut key locks control points to a frame number or unlocks a key frame.			
Select Left Handle	This is the shortcut to select the left handle of a selected keyframe.	[[
Select Next Keyframe	This is the shortcut to select the next keyframe.	,	,	
Select Prev Keyframe	This is the shortcut to select the previous keyframe.	semicolon (;)	semicolon (;)	
Select Right Handle	This is the shortcut to select the right handle of a selected keyframe.]]	
Toggle Grid	In Function Editors, the shortcut key to display grid.	G	G	
Toggle Stop-Motion Segment	Shortcut key to toggle the Constant Segment attribute of a function keypoint. In a 3D path, to hold on a position for a while, then jump to another position, set the corresponding segment constant in its velocity curve.	S	S	
Zoom In X	In Function Editors, the shortcut key to zoom in the X axis.	4	4	

Command	Description	Windows	macOS	My Shortcut
Zoom In Y	In Function Editors, the shortcut key to zoom in the Y axis.	6	6	
Zoom Out X	In Function Editors, the shortcut key to zoom out in the X axis.	3	3	
Zoom Out Y	In Function Editors, the shortcut key to zoom out the Y axis.	5	5	

Library Keyboard Shortcuts

Command	Description	Windows	macOS	My Shortcut
Details	Shortcut key to turn on the detail view			
List	Shortcut key to turn on the list view .			
Refresh	Shortcut key that reloads the list of contents in the Library.	F5	F5	
Rename	Shortcut key that renames a library folder or template.			
Thumbnails	Shortcut key to turn on the thumbnail view .			

Gaming Keyboard Shortcuts

Command	Description	Windows	macOS	My Shortcut
Select Group #01	Select Group 01			
Select Group #02	Select Group 02			
Select Group #03	Select Group 03			
Select Group #04	Select Group 04			
Select Group #05	Select Group 05			
Select Group #06	Select Group 06			
Select Group #07	Select Group 07			
Select Group #08	Select Group 08			
Select Group #09	Select Group 09			
Select Group #10	Select Group 10			

Guides Keyboard Shortcuts

Command	Description	Windows	macOS	My Shortcut
Align with Guide	When enabled, drawing tools will draw aligned with guides			
Enable Guide	Enable guide for assistive drawing	Shift + G	Shift + G	
Enable Guide with Eraser	When enabled, guide remains effective with eraser			
Full Cursor Display	When enabled, lines from the mouse cursor will extend to the edge of the drawing area			
Lock Guide	When enabled, guides are locked in position and cannot be modified			
Show Reference Lines	Display additional lines used as visual reference for the guide			

Mini Playback Keyboard Shortcuts

Command	Description	Windows	macOS	My Shortcut
Mini Playback	Starts the mini playback			
Mini Playback Dialog	Opens the mini playback dialog			