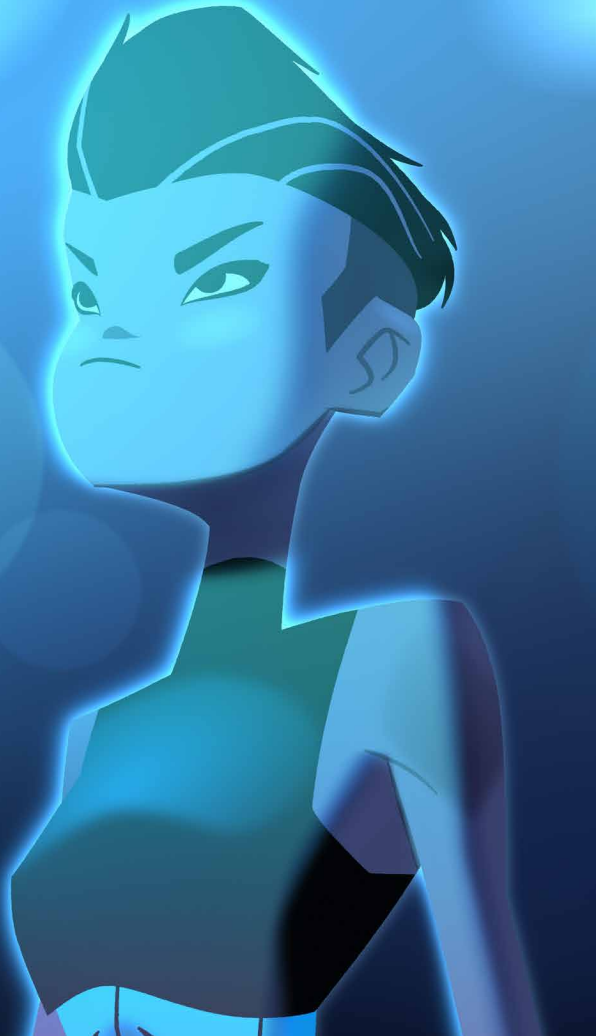


# Harmony22

Premium

## Toon Boom Harmony22 Premium Keyboard Shortcuts Guide



---

TOON BOOM ANIMATION INC.  
4200 St.Laurent Blvd, Suite 1020  
Montreal, Quebec, Canada  
H2W 2R2

---

+1 514 278 8666  
contact@toonboom.com  
toonboom.com

## Legal Notices

Toon Boom Animation Inc.  
4200 Saint-Laurent, Suite 1020  
Montreal, Quebec, Canada  
H2W 2R2

Tel: +1 514 278 8666

Fax: +1 514 278 2666

[toonboom.com](http://toonboom.com)

### Disclaimer

The content of this document is the property of Toon Boom Animation Inc. and is copyrighted. Any reproduction in whole or in part is strictly prohibited.

The content of this document is covered by a specific limited warranty and exclusions and limit of liability under the applicable License Agreement as supplemented by the special terms and conditions for Adobe® Flash® File Format (SWF). For details, refer to the License Agreement and to those special terms and conditions.

### Trademarks

Toon Boom® is a registered trademark. Harmony™ and the Toon Boom logo are trademarks of Toon Boom Animation Inc. All other trademarks of the property of their respective owners.

### Publication Date

09-23-2022

Copyright © 2022 Toon Boom Animation Inc., a Corus Entertainment Inc. company. All rights reserved.

# Table of Contents

<b>Table of Contents</b> .....	<b>2</b>
<b>About Keyboard Shortcuts</b> .....	<b>5</b>
<b>Accessing the Keyboard Shortcuts Dialog</b> .....	<b>6</b>
<b>About Keyboard Shortcut Sets</b> .....	<b>7</b>
Switching Between Shortcut Sets .....	8
Creating a Keyboard Shortcut Set .....	9
Deleting a Keyboard Shortcut Set .....	10
Exporting Keyboard Shortcuts .....	11
Importing Keyboard Shortcuts .....	12
<b>Searching for Keyboard Shortcuts</b> .....	<b>13</b>
<b>Customizing Keyboard Shortcuts</b> .....	<b>15</b>
<b>Resetting Keyboard Shortcuts</b> .....	<b>17</b>
<b>Default Keyboard Shortcuts</b> .....	<b>18</b>
General Keyboard Shortcuts .....	19
Camera Keyboard Shortcuts .....	32
Timeline Keyboard Shortcuts .....	40
Node View Keyboard Shortcuts .....	49
Exposure Sheet Keyboard Shortcuts .....	53
Colour Management Keyboard Shortcuts .....	58
Drawing Mode Keyboard Shortcuts .....	59
Function Editor Keyboard Shortcuts .....	75
Library Keyboard Shortcuts .....	77
Tagging Keyboard Shortcuts .....	78
Tool Presets Keyboard Shortcuts .....	79
3D Graph Keyboard Shortcuts .....	80
Shift and Trace Keyboard Shortcuts .....	82
Deformation Keyboard Shortcuts .....	83
Envelope Creator Keyboard Shortcuts .....	85
Exposure Fill Keyboard Shortcuts .....	86

Gaming Keyboard Shortcuts .....	87
Guides Keyboard Shortcuts .....	88
Animated Matte Generator Keyboard Shortcuts .....	89
Particle Keyboard Shortcuts .....	92
Timesheet Keyboard Shortcuts .....	93
Mini Playback Keyboard Shortcuts .....	96
Node Caching Keyboard Shortcuts .....	97

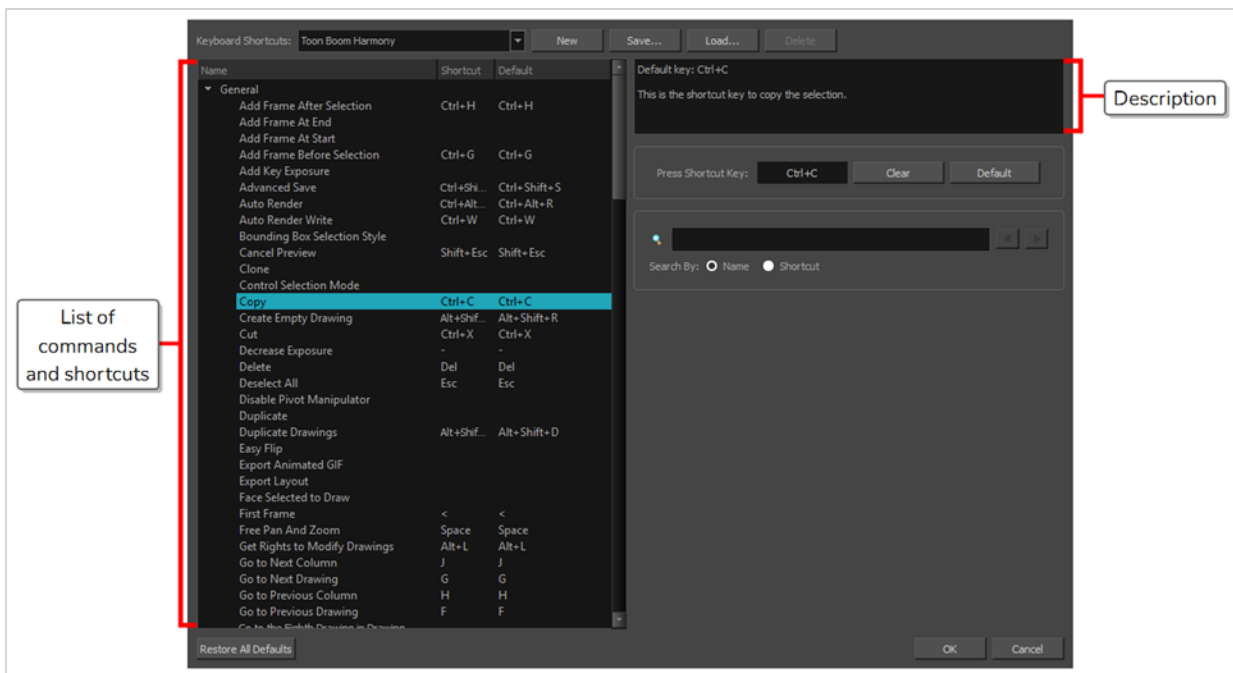


## About Keyboard Shortcuts

Harmony uses keyboard shortcuts to allow you to quickly use commands you are familiar with without having to browse through menus and toolbars. Learning the keyboard shortcuts for the commands you use the most often can be a great way to increase your productivity with Harmony.

Using the Keyboard Shortcuts dialog, you can:

- Check which keyboard shortcuts are assigned to which commands
- Search through commands and keyboard shortcuts
- Customize existing keyboard shortcuts
- Assign keyboard shortcuts to commands that don't have any
- Save keyboard shortcuts as presets
- Switch between keyboard shortcut presets
- Export and import keyboard shortcut configurations



## Accessing the Keyboard Shortcuts Dialog

You can access the Keyboard Shortcuts dialog from the **Edit** menu on Windows and GNU/Linux, or from the **Harmony Premium** menu on macOS. The Keyboard Shortcuts menu item is just below the Preferences menu item.

### How to open the Keyboard Shortcuts dialog box

1. Do one of the following:
  - **Windows or GNU/Linux:** In the top menu, select **Edit > Keyboard Shortcuts**.
  - **macOS:** In the top menu, select **Harmony Premium > Keyboard Shortcuts**.

## About Keyboard Shortcut Sets

Harmony comes preloaded with different sets of keyboard shortcut configurations:

- **Toon Boom Harmony:** The default keyboard shortcuts for Harmony. When the Harmony documentation refers to a specific keyboard shortcut, it refers to the keyboard shortcuts in this preset.
- **Adobe Flash:** A preset that likens the default keyboard shortcut configuration in the Adobe Animate software.
- **Toon Boom Studio:** A preset that likens the default keyboard shortcut configuration for Toon Boom Studio, a legacy Toon Boom software.

You can quickly switch between keyboard shortcut sets in the Keyboard Shortcuts dialog. You can also create your own keyboard shortcut sets. Keyboard shortcut sets can be saved directly to your preferences, along with the shortcut presets that are preloaded in Harmony. They can also be exported as XML files and imported later or shared with other users.



## Switching Between Shortcut Sets

You can instantly switch from one keyboard shortcut set to another in the Keyboard Shortcuts dialog.

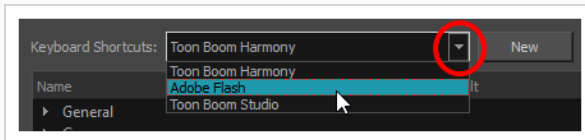


### NOTE

Switching to a different keyboard shortcut set will not discard your current keyboard shortcut configuration. Your keyboard shortcut configuration is saved to the currently selected keyboard shortcut set. Hence, you can return to your old configuration simply by switching back to the previously used keyboard shortcut set.

### How to switch between keyboard shortcut sets

1. Do one of the following to open the Keyboard Shortcuts dialog:
  - **Windows or GNU/Linux:** In the top menu, select **Edit > Keyboard Shortcuts**.
  - **macOS:** In the top menu, select **Harmony Premium > Keyboard Shortcuts**.
2. In the top-left corner of the Keyboard Shortcuts dialog, open the **Keyboard Shortcuts:** drop-down and select the preset you want to use.



3. Click on **OK**.

## Creating a Keyboard Shortcut Set

You can create your own keyboard short cut sets and add them to the **Keyboard Shortcuts:** drop-down menu of the Keyboard Shortcuts dialog.

### How to create a keyboard shortcut set

1. Do one of the following to open the Keyboard Shortcuts dialog:
  - **Windows or GNU/Linux:** In the top menu, select **Edit > Keyboard Shortcuts**.
  - **macOS:** In the top menu, select **Harmony Premium > Keyboard Shortcuts**.
2. In the list of commands and keyboard shortcuts, configure each keyboard shortcut the way you want them in your preset.
3. Near the top of the Keyboard Shortcuts dialog, click on the **New** button.
4. In the Keyboard Shortcut Set dialog, type in a name for your keyboard shortcut preset.
5. Click **OK**.

The keyboard shortcut set is now in the **Keyboard Shortcuts:** drop-down. Selecting it will load the keyboard shortcuts configuration you had when you created it.

## Deleting a Keyboard Shortcut Set

You can delete a custom keyboard shortcut set from the **Keyboard Shortcuts:** drop-down in the Keyboard Shortcuts dialog.



### NOTE

You can only delete custom keyboard shortcut sets that you created or imported. You cannot delete the keyboard shortcut sets that are preloaded with Harmony.

### How to delete a keyboard shortcut set

1. Do one of the following to open the Keyboard Shortcuts dialog:
  - **Windows or GNU/Linux:** In the top menu, select **Edit > Keyboard Shortcuts**.
  - **macOS:** In the top menu, select **Harmony Premium > Keyboard Shortcuts**.
2. In the **Keyboard Shortcuts:** drop-down, select the keyboard shortcut set that you want to delete.
3. At the right of the **Keyboard Shortcuts:** drop-down, click on the **Delete** button.  
A confirmation prompt appears.
4. If you are sure you want to delete the selected keyboard shortcut set, click on **Yes**.  
The selected keyboard shortcut set is removed from the **Keyboard Shortcuts:** drop-down.

## Exporting Keyboard Shortcuts

You can export your current keyboard shortcut configuration into an XML file. You can reimport this file later to restore your configuration, or share it with project collaborators so that you all use the same keyboard shortcuts.



### NOTE

When you export your keyboard shortcuts configuration, only the currently selected keyboard shortcuts set is exported.

### How to export your keyboard shortcut configuration

1. Do one of the following to open the Keyboard Shortcuts dialog:
  - **Windows or GNU/Linux:** In the top menu, select **Edit > Keyboard Shortcuts**.
  - **macOS:** In the top menu, select **Harmony Premium > Keyboard Shortcuts**.
2. In the **Keyboard Shortcuts:** drop-down, make sure the keyboard shortcut set you want to export is selected.
3. At the right of the **Keyboard Shortcuts:** drop-down, click on the **Save...** button.  
A save dialog appears.
4. Browse to the location where you want to save your keyboard shortcut file.
5. Type in the desired name for your keyboard shortcut file.
6. Click on **Save**.

The currently keyboard shortcut set has been exported as an XML file, in the selected location with the file name you gave it.

## Importing Keyboard Shortcuts

You can import a keyboard shortcut configuration file exported from Harmony.



### NOTES

- To export keyboard shortcuts into a file, see [Exporting Keyboard Shortcuts on page 11](#).
- When you import a keyboard shortcuts file, it is added to the list of keyboard shortcut sets in the Keyboard Shortcuts drop-down menu of the Keyboard Shortcuts dialog.

### How to import a keyboard shortcut configuration file

1. Do one of the following to open the Keyboard Shortcuts dialog:
  - **Windows or GNU/Linux:** In the top menu, select **Edit > Keyboard Shortcuts**.
  - **macOS:** In the top menu, select **Harmony Premium > Keyboard Shortcuts**.
2. At the right of the **Keyboard Shortcuts:** drop-down, click on the **Load...** button.  
An open dialog appears.
3. Browse to the directory where your keyboard shortcut file is located.
4. Select the keyboard shortcut file you want to import.
5. Click on **Open**.

The configuration selected keyboard shortcut file is loaded into the Keyboard Shortcuts dialog, and is added as a keyboard shortcut set in the **Keyboard Shortcuts:** drop-down menu.

## Searching for Keyboard Shortcuts

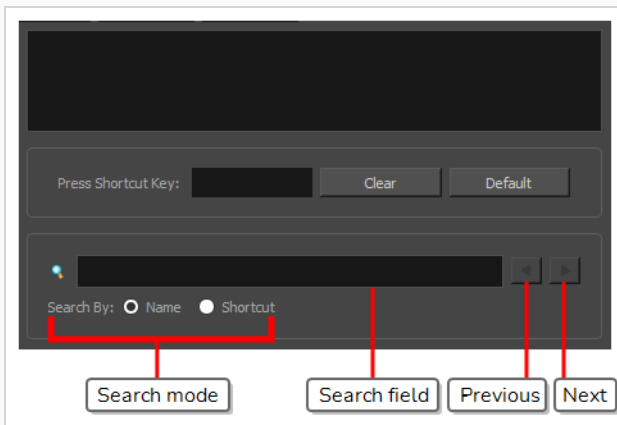
Harmony has a very extensive list of commands that can be assigned to keyboard shortcuts. Using the Search bar in the Keyboard Shortcuts dialog, you can:


- Search for a command, and its keyboard shortcut, by typing part or all of its name.
- Search for a command by typing part or all of its currently assigned keyboard shortcut.

### How to search for a keyboard shortcut


1. Do one of the following to open the Keyboard Shortcuts dialog:

- **Windows or GNU/Linux:** In the top menu, select **Edit > Keyboard Shortcuts**.
- **macOS:** In the top menu, select **Harmony Premium > Keyboard Shortcuts**.



1. Below the  Search field, select the type of search you want to perform:

- **Name:** To search a command by typing part or all of its name.
- **Shortcut:** To search a command by typing part or all of its currently assigned keyboard shortcut.

2. In the  Search field, type in either part of the name of the command you want to find, or part of its currently assigned keyboard shortcut, depending on which option you chose in the previous step.



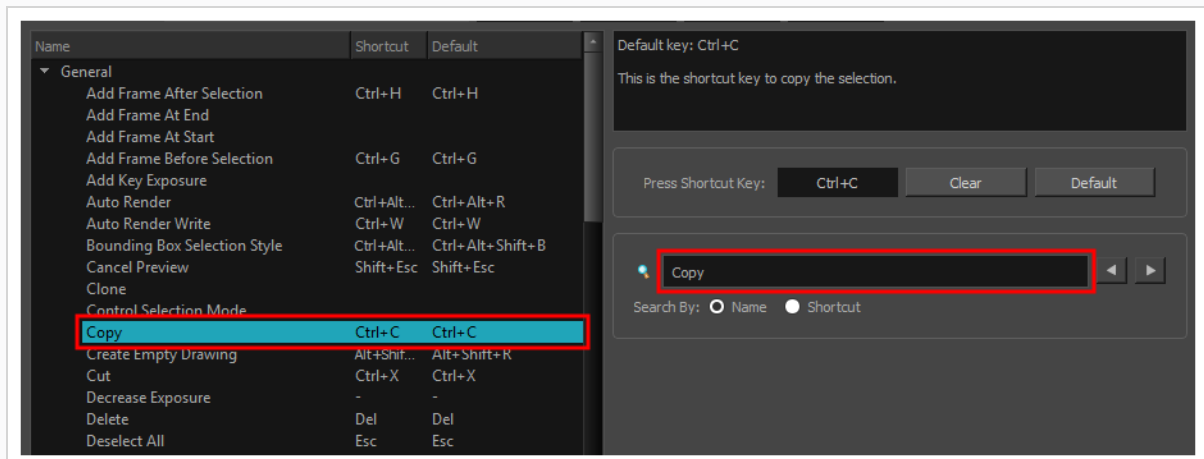
## NOTES

- When searching for a command by its keyboard shortcut, if the keyboard shortcut is a combination, make sure that:
  - Modifier keys (Ctrl, Alt and Shift) are typed before other keys.
  - Join the keys by a + sign, with no space around it.

For example, to search for the **Copy** command, type **Ctrl+C**.

- On macOS, modifier keys such as Command (⌘), Control (^), Alt (⌥) and Shift (⇧) are represented by specific symbols that cannot be typed with a standard keyboard. You can copy and paste them from this document into the search field if you are reading this on a computer.

Harmony will immediately select the first command in the list that matches your search query.



3. If your query matches several commands in the list, uses the ◀ Previous and ▶ Next button right of the 🔍 Search field to navigate between matching commands.

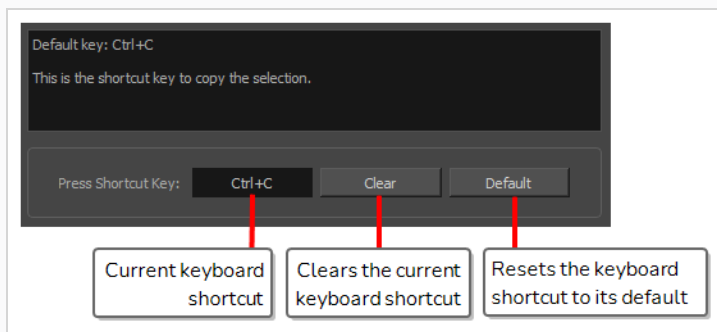
## Customizing Keyboard Shortcuts

You can create your own keyboard shortcut for a tool or command, by assigning it to a certain key or combination of keys.

### How to customize a keyboard shortcut

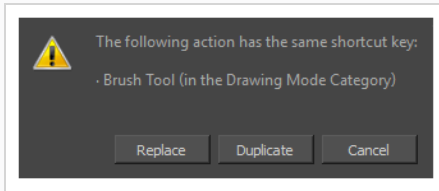
1. Do one of the following to open the Keyboard Shortcuts dialog:
  - **Windows or GNU/Linux:** In the top menu, select **Edit > Keyboard Shortcuts**.
  - **macOS:** In the top menu, select **Harmony Premium > Keyboard Shortcuts**.
2. In the list of commands and shortcuts to the left, locate and select the command for which you want to assign a keyboard shortcut—see [Searching for Keyboard Shortcuts](#).

The description of the selected command, as well as its currently assigned shortcut, appear in the right pane.



3. Do one of the following:
  - If you want to assign a custom shortcut to the selected command, click inside the box just right of **Press Shortcut Key:**.
  - If you want the selected command to have no keyboard shortcut, click on **Clear**.
  - If you want the selected command to be assigned to its default keyboard shortcut, click on **Default**.
4. If you are assigning a custom keyboard shortcut to the selected command, using your keyboard, type in the keyboard shortcut you want to use in the **Press Shortcut Key:** field.
5. If the keyboard shortcut you typed in is already in use by another command, a dialog box will prompt you to decide what to do.





If this occurs, choose one the following options depending on what suits your case better:

- **Replace:** This will unassign the keyboard shortcut from the commands listed in the dialog box, and assign it to the selected command.
- **Duplicate:** Assigns the keyboard shortcut to the selected command, and lets other commands use the same keyboard shortcut.



#### **IMPORTANT**

Having several commands share the same keyboard shortcut could cause undesired behaviour.

- **Cancel:** Allows you to attempt assigning a different keyboard shortcut to the selected command.

## Resetting Keyboard Shortcuts

You can reset the configuration of your keyboard shortcuts to the default values for the selected keyboard shortcut set.



### IMPORTANT

This will replace your current keyboard shortcut configuration and discard any custom keyboard shortcut you created.

### How to reset your keyboard shortcuts configuration

1. Do one of the following to open the Keyboard Shortcuts dialog:
  - **Windows or GNU/Linux:** In the top menu, select **Edit > Keyboard Shortcuts**.
  - **macOS:** In the top menu, select **Harmony Premium > Keyboard Shortcuts**.
2. In the **Keyboard Shortcuts:** drop-down, make sure the keyboard shortcut set that you want to restore to its default configuration is selected.
3. In the bottom-left corner of the Keyboard Shortcuts dialog, click on **Restore All Defaults**.  
A confirmation prompt appears.
4. If you are sure you want to restore the default keyboard shortcut configuration for the selected keyboard shortcut set, click on **Yes**.

All the commands in the list are now set to their default keyboard shortcut.

## Default Keyboard Shortcuts

The following section lists all of the default keyboard shortcuts for Harmony.

To make it easier to search for specific keyboard shortcuts, the shortcuts have been divided and grouped into sections.

General Keyboard Shortcuts .....	19
Camera Keyboard Shortcuts .....	32
Timeline Keyboard Shortcuts .....	40
Node View Keyboard Shortcuts .....	49
Exposure Sheet Keyboard Shortcuts .....	53
Colour Management Keyboard Shortcuts .....	58
Drawing Mode Keyboard Shortcuts .....	59
Function Editor Keyboard Shortcuts .....	75
Library Keyboard Shortcuts .....	77
Tagging Keyboard Shortcuts .....	78
Tool Presets Keyboard Shortcuts .....	79
3D Graph Keyboard Shortcuts .....	80
Shift and Trace Keyboard Shortcuts .....	82
Deformation Keyboard Shortcuts .....	83
Envelope Creator Keyboard Shortcuts .....	85
Exposure Fill Keyboard Shortcuts .....	86
Gaming Keyboard Shortcuts .....	87
Guides Keyboard Shortcuts .....	88
Animated Matte Generator Keyboard Shortcuts .....	89
Particle Keyboard Shortcuts .....	92
Timesheet Keyboard Shortcuts .....	93
Mini Playback Keyboard Shortcuts .....	96
Node Caching Keyboard Shortcuts .....	97

## General Keyboard Shortcuts

Command	Description	Windows/Linux	macOS	My Shortcut
Add Frame After Selection	The shortcut key to display the Add Frame After Selection dialog box in the Xsheet View .	Ctrl + H	Ctrl + H	
Add Frame At End	The shortcut key to display the Add Frame At Bottom dialog box in the Xsheet View .			
Add Frame At Start	The shortcut key to display the Add Frame At Top dialog box in the Xsheet View .			
Add Frame Before Selection	The shortcut key to display the Add Frame Before Selection dialog box in the Xsheet View .	Ctrl + G	⌘ + G	
Add Key Exposure	Add a drawing key exposure.			
Advanced Save	This is the shortcut to open the Advanced Save dialog box. This dialog box is used to save specific parts of a scene (scene data, palette lists, palettes and drawings).	Ctrl + Shift + S	Shift + ⌘ + S	
Auto Render	This is the shortcut key to render frames automatically.	Ctrl + Alt + R	⌘ + Alt + R	
Auto Render Write	This is the shortcut key to enable the Write nodes to write final	Ctrl + W	⌘ + W	

Command	Description	Windows/Linux	macOS	My Shortcut
	frames to the file system.			
Bounding Box Selection Style	This is the shortcut key to toggle between BBox highlighting and colour highlighting of selected drawings.			
Cancel Preview	This is the shortcut key to cancel the automatic preview .	Shift + Esc	Shift + Esc	
Clone	The shortcut key to main Edit->Clone			
Control Selection Mode	Enable the group selection of controls with the lasso or marquee.			
Copy	This is the shortcut key to copy the selection.	Ctrl + C	⌘ + C	
Create Empty Drawing	This is the shortcut key used to replace selected drawings by new drawings.	Alt + Shift + R	Alt + Shift + R	
Cut	This is the shortcut key to cut the selection.	Ctrl + X	⌘ + X	
Decrease Exposure	Removes one frame from the exposure of a timed value.	-	-	
Delete	This is the shortcut key to delete the selection.	Del	Backspace	
Deselect All	This is the shortcut key	Esc	Esc	

Command	Description	Windows/Linux	macOS	My Shortcut
	to deselect all selected objects.			
Disable Pivot Manipulator	When activated, the pivot point cannot be changed position visually.			
Duplicate	The shortcut key to main Edit->Duplicate.			
Duplicate Drawings	This is the shortcut key used to replace selected drawings by a copy of the drawing.	Alt + Shift + D	Alt + Shift + D	
Easy Flip	This is the shortcut key to execute a single flip in the Drawing view .			
Export Animated GIF	Use this shortcut to open the Export Animated GIF window .			
Export Layout	Export scene layout to image.			
Face Selected to Draw	This is the shortcut key that makes the Perspective view perpendicular to a selected drawing, allowing you to draw on it.			
First Frame	This is the shortcut key to go to the first frame.	<	<	
Free Pan and Zoom	This is the shortcut key to pan and zoom the	Space	Space	

Command	Description	Windows/Linux	macOS	My Shortcut
	current view .			
Get Rights to Modify Drawings	The shortcut key to get the edit rights on the selected drawings.	Alt + L	Alt + L	
Go to Next Column	Go to Next Column	J	J	
Go to Next Drawing	Go to Next Drawing	G	G	
Go to Previous Column	Go to Previous Column	H	H	
Go to Previous Drawing	Go to Previous Drawing	F	F	
Go to the Eighth Drawing in Drawing View	Go to the Eighth Drawing in drawing view			
Go to the Fifth Drawing in Drawing View	Go to the Fifth Drawing in drawing view			
Go to the First Drawing in Drawing View	Go to the first Drawing in drawing view			
Go to the Fourth Drawing in Drawing View	Go to the Fourth Drawing in drawing view			
Go to the Ninth Drawing in Drawing View	Go to the Ninth Drawing in drawing view			
Go to the Second	Go to the second			

Command	Description	Windows/Linux	macOS	My Shortcut
Drawing in Drawing View	Drawing in drawing view			
Go to the Seventh Drawing in Drawing View	Go to the Seventh Drawing in drawing view			
Go to the Sixth Drawing in Drawing View	Go to the Sixth Drawing in drawing view			
Go to the Tenth Drawing in Drawing View	Go to the Tenth Drawing in drawing view			
Go to the Third Drawing in Drawing View	Go to the third Drawing in drawing view			
Help	This is the shortcut to the Online Help			
Import Movie	Import QuickTime movie to the scene			
Increase Exposure	Adds one frame to the exposure of a timed value.	+	+	
Invert Selection	This is the shortcut key to invert the selection in the current view .	Ctrl + Shift + I	Shift + ⌘ + I	
.Jog Backward	This is the shortcut key to jog the frames backward.			
.Jog Forward	This is the shortcut key to jog the frames forward.			



Command	Description	Windows/Linux	macOS	My Shortcut
Last Frame	This is the shortcut key to go to the last frame.	>	>	
Look at Selected	This is the shortcut key that repositions a 3D object in the centre of the view .			
Merge	The shortcut key to main Edit->Merge			
Mirror View	This is the shortcut key to mirror the view horizontally.			
Move Backward	This is the shortcut key to move the camera backward in the current view .			
Move Forward	This is the shortcut key to move the camera forward in the current view .			
New	This is the shortcut to create a new scene.	Ctrl + N	⌘ + N	
Next Frame	This is the shortcut key to go to the next frame.	period (.)	period (.)	
Open	This is the shortcut to open a scene or open drawings in paint mode.	Ctrl + O	⌘ + O	
OpenGL Frames	Opens the Save OpenGL Frames dialog box			
Paste	This is the shortcut key	Ctrl + V	⌘ + V	

Command	Description	Windows/Linux	macOS	My Shortcut
	to paste the clipboard contents to the scene.			
Paste Cycle	This is the shortcut key to paste the clipboard contents to the scene in cycles.	Ctrl + /	⌘ + /	
Paste Reverse	This is the shortcut key to paste the clipboard contents to the scene in reverse.	Ctrl + .	Ctrl + .	
Paste Special	This is the shortcut key to paste the clipboard contents to the scene.	Ctrl + B	⌘ + B	
Paste Special Again	This is the shortcut key to paste the clipboard contents to the scene.	Ctrl + Shift + B	⌘ + Shift + B	
Peg Selection Mode	This is the shortcut key to toggle the peg selection mode for the transform tool.			
Preferences	Launches the preferences dialog.	Ctrl + U	⌘ + U	
Preview Manager	This is the shortcut key to open the Show/Hide Manager.			
Previous Frame	This is the shortcut key to go to the previous frame.	comma (,)	comma (,)	
Quick Close-up	This toggles between a global view and a close-up view.	Shift + Z	Shift + Z	

Command	Description	Windows/Linux	macOS	My Shortcut
Read Changed Drawings	This is the shortcut key to reload drawings that have changed on disk.	Ctrl + ;	⌘ + ;	
Recentre	This is the shortcut key to recentre the view on the mouse pointer in the current view .	N	N	
Record and Play	This is the shortcut key to record the camera view and play the result.			
Redo	This is the shortcut key to redo the an operation that was undone.	Ctrl + Shift + Z	Ctrl + Shift + Z	
Release Rights to Modify Drawings	The shortcut key to release the edit rights on selected drawings.	Alt + Shift + L	Alt + Shift + L	
Remove All Drawings	Removes all drawings from the thumbnails side panel.	Esc	Esc	
Remove Art Outside Selection	This is the shortcut key to delete the selection.	Shift + Del or Shift + Backspace	Shift + Del or Shift + Backspace	
Remove Duplicate Key Exposure	Remove duplicate drawing key exposure.			
Remove Key Exposure	Remove a drawing key exposure.			
Rename by Frame	Rename drawings by their frame number.			
Rename	This is the shortcut key	Ctrl + D	⌘ + D	

Command	Description	Windows/Linux	macOS	My Shortcut
Drawings	used to rename selected drawing.			
Rename Drawings with Prefix	This is the shortcut key used to rename selected drawing by prepending a prefix to its exposure.			
Render	Opens the Render Write Nodes dialog box, which you can use to initiate a local composite or batch composite operation.	Ctrl + Shift + Y	⌘ + Shift + Y	
Render and Play	This is the shortcut key to render and preview your scene in the Player module.			
Reset Pan	This is the shortcut key to recentre the current view .	Shift + N	Shift + N	
Reset Rotation	This is the shortcut to reset the rotation of the current view .	Shift + X	Shift + X	
Reset View	This is the shortcut key to reset the pan, the zoom and the rotation in the current view .	Shift + M	Shift + M	
Reset Zoom	This is the shortcut key to reset the zoom level of the current view .			
Rotate View CCW	This is the shortcut key to rotate the view counter clock-wise.			

Command	Description	Windows/Linux	macOS	My Shortcut
Rotate View CW	This is the shortcut key to rotate the view clock-wise.			
Save	This is the shortcut to save everything in a scene (scene data, palette lists, palettes and drawings).	Ctrl + S	⌘ + S	
Select All	This is the shortcut key to select everything in the current view .	Ctrl + A	⌘ + A	
Select Child	Select Child.			
Select Child Skipping Effects	Select Child Skip Effects.	Shift + B	Shift + B	
Select Group Content	Select Group Content.			
Select Next Sibling	Select next brother.	?	?	
Select Parent	Select Parent.			
Select Parent Skipping Effects	Select Parent Skip Effects.	B	B	
Select Previous Sibling	Select previous brother.	/	/	
Select Synced Layers	This is the shortcut key to select all linked read layers.			
Share Functions	This is the shortcut key to share functions so			

Command	Description	Windows/Linux	macOS	My Shortcut
	that they are available to other layers.			
Shortcuts	Launches the shortcuts dialog.			
Show Colour Model	The shortcut key that opens/closes the Colour Model.	Shift+K	Shift+K	
Show Whats This	The shortcut key to Help.	F1	⌘ + /	
Shuttle Backward	This is the shortcut key to shuttle the frames backward.			
Shuttle Forward	This is the shortcut key to shuttle the frames forward.			
Shuttle Reset	This is the shortcut key to reset the shuttle control's position.			
Test SW F Movie	This is the shortcut key to render and preview your scene in a Flash movie.			
Toggle Auto-Apply	This is the shortcut key to toggle the Auto-Apply feature in node editors			
Toggle Auto-Get-Rights-to-Modify-Palette-Lists	This is the shortcut key to toggle the automatic locking of palette lists.			
Toggle Auto-Get-	This is the shortcut key			

Command	Description	Windows/Linux	macOS	My Shortcut
Rights-to-Modify-Palettes	to toggle the automatic locking of palettes.			
Toggle Auto-Lock	This is the shortcut key to toggle the automatic locking of drawings.			
Toggle Editor	This is the shortcut key that opens the editor for the selected node.	Shift+E	Shift+E	
Toggle Full Screen	This is the shortcut key to toggle the full screen display mode.	Ctrl + F	⌘ + F	
Toggle Playback	This is the shortcut key to playback frames in Sceneplanning views. It is invoked on keyRelease.	Shift + Return	Shift + Return	
Toggle Show Locked Drawings in Outline	This controls whether the drawings will be drawn in full or only in outline when they are locked.			
Toggle Velocity Editor	This is the shortcut to open the "Velocity Editor"	Shift + V	Shift + V	
Undo	This is the shortcut key to undo the previous operation.	Ctrl + Z	⌘ + Z	
Unload Model	The shortcut key that unload the current frame in the Model View .	Del	Del	

Command	Description	Windows/Linux	macOS	My Shortcut
Zoom In	This is the shortcut key to zoom-in the current view.	2	2	
Zoom Out	This is the shortcut key to zoom-out the current view.	1	1	



## Camera Keyboard Shortcuts

Command	Description	Windows/Linux	macOS	My Shortcut
Add All to Onion Skin	Show all nodes in the onion skins.	Alt + Shift + O	Alt + Shift + O	
Add to Onion Skin	Show the selected nodes and their children in the onion skins.	Shift + S	Shift + S	
Animate Current Frame	Automatically creates keyframes at the current frame when using the Transform or Advanced Animation tools.			
Animate Off	All modifications done with an animation tool are applied across the entire scene duration.			
Animate Onion Skin Range	Modify existing keyframes in the frame range defined by the onion skin. Keyframes will be added at the first and last frames of this range if none are present.			
Bitmap Image Quality	This is the shortcut to set the small pixmap files image quality	Ctrl + Q	⌘ + Q	
Centre on Selection	This shortcut centres the timeline's layer	Shift + O	Shift + O	

Command	Description	Windows/Linux	macOS	My Shortcut
	list on the current selection.			
Clear Alignment Guides	Clear all alignment guides			
Create Drawing from Drawing Selection	Create Drawing from Drawing Selection	F9	⌘ + F9	
Create Symbol	Create Symbol	F8	F8	
Distribute to Layers	Distribute all contours and groups of current drawings in separate layers			
Duplicate Symbol	Duplicate Selected Symbol			
Enable Alignment Guides	Enable Alignment Guides			
Enable/Disable Playback	This is the shortcut to turn on/off the ability to playback frames in the Top, Side or Free View .			
Enter Selected Symbol	Enter Selected Symbol	Ctrl + E	⌘ + E	
Expand Symbol	Expand Symbol	Shift + F8	Shift + F8	
Flip Horizontal	This is the shortcut key to flip the selection horizontally.	4	4	
Flip Scale X	This is the shortcut			

Command	Description	Windows/Linux	macOS	My Shortcut
	key to flip the X axis scaling of the selection.			
Flip Scale Y	This is the shortcut key to flip the Y axis scaling of the selection.			
Flip Vertical	This is the shortcut key to flip the the selection vertically.	5	5	
Hide All Control Parameters	This is the shortcut to hide all controls in Sceneplanning views.	Shift + C	Shift + C	
Hide Selected	This is the shortcut key to hide selected elements.	Alt + H	Alt + H	
Insert Control Point	This is the shortcut to insert a new control point in the currently selected 3D path.	P	P	
Insert Keyframe	This is the shortcut to insert a key frame in the currently selected layers.	F6	F6	
Insert Keyframe and Duplicate Drawings	This is the shortcut to insert a key frame and duplicate drawing in the currently selected layers.			
Insert Position	This is the shortcut			

Command	Description	Windows/Linux	macOS	My Shortcut
Keyframe	to insert a position key frame in the currently selected layers.			
Inverse Kinematics Tool	This is the shortcut for the "Inverse Kinematics" tool in Sceneplanning views. This tool is only useful on pegs.	Shift + I	Shift + I	
Lock Alignment Guides	Lock the alignment guides			
Lock All	Lock all.	Ctrl + Shift + L	⌘ + Shift + L	
Lock All Others	Lock all others.	Ctrl + Alt + Shift + O	⌘ + Alt + Shift + O	
Lock Selection	Lock the selection so it cannot be selected from the Sceneplanning views.	Ctrl + Alt + L	⌘ + Alt + L	
Maintain Size Tool	This is the shortcut for the "Maintain Size" tool in Sceneplanning views. This tool is only useful in the Side View or Top View.	Alt + 6	Alt + 6	
New Horizontal Alignment Guide	Create a new horizontal alignment guide			
New Vertical Alignment Guide	Create new vertical alignment guide			

Command	Description	Windows/Linux	macOS	My Shortcut
Remove All Onion Skin	Hide all elements from the onion skins	Ctrl + Shift + O	⌘ + Shift + O	
Remove Selection from Onion Skin	Hide from the onion skins elements that are selected			
Remove Unselected from Onion Skin	Hide from the onion skins elements that are not selected			
Reset All Transformations	This is the shortcut key to reset all transformations on the selected element	Shift + R	Shift + R	
Reset All Transformations Except Z	This is the shortcut key to reset all transformations on the selected element except their Z			
Reset Transformation	This is the shortcut key to reset transformation on the selected element.	R	R	
Return To Parent Symbol	Return to Parent Symbol	Ctrl + Shift + E	⌘ + Shift + E	
Rotate Tool	This is the shortcut for the Rotate tool in Sceneplanning views.	Alt + 3	Alt + 3	
Scale Tool	This is the shortcut for the Scale tool in Sceneplanning views.	Alt + 4	Alt + 4	

Command	Description	Windows/Linux	macOS	My Shortcut
Select Control Point	This is the shortcut to select the control point closest to the mouse pointer.	T	T	
Select Next Control Point	This is the shortcut to select the next control point on the currently selected function path.	'	'	
Select Previous Control Point	This is the shortcut to select the previous control point on the currently selected function path.	semicolon (;)	semicolon (;)	
Show Alignment Guides	Show Alignment Guides			
Show Hidden	This is the shortcut to show hidden elements in the Sceneplanning views.	Alt + Shift + H	Alt + Shift + H	
Show Snapshot	This shortcut temporarily displays the last snapshot taken in the Camera View.			
Show/Hide Control Parameters	This is the shortcut to display the controls (either the spline of a peg or the handles on a quadmap) of the selected node in Sceneplanning views.	Shift + F11	⌘ + F11	

Command	Description	Windows/Linux	macOS	My Shortcut
Show/Hide Transform Tool Controls	Show/Hide Transform Tool Controls.			
Skew Tool	This is the shortcut for the Skew tool in Sceneplanning views.	Alt + 5	Alt + 5	
Spline Offset Tool	This is the shortcut for the "Spline Offset" tool in Sceneplanning views.	Alt + 8	Alt + 8	
Substitute Drawing Next	This is the shortcut key to change the exposed drawing to the next one.	]	]	
Substitute Drawing Previous	This is the shortcut key to change the exposed drawing to the previous one.	[	[	
Take Snapshot	This shortcut takes a snapshot of the camera view content.			
Toggle Between Line and Curve	This is the shortcut to toggle the continuity of the selected control point.			
Toggle Lock In Time	This is the shortcut to change the selected point from a control point, which is not locked in time, to a keyframe, which	Alt + L	Alt + L	

Command	Description	Windows/Linux	macOS	My Shortcut
	is locked in time.			
Toggle Onion Skin Drawing Mode	The onion skin is calculated using the next n drawings ( versus the next n frames ) in the camera view .			
Toggle Snap Keyframe	This is the shortcut to snap the next keyframe to the current keyframe's value. To snap, both keyframes must have the same initial value and the current segment must be marked as constant.	X	X	
Transform Tool	This is the shortcut for the "Transform Tool" tool in the cameraview .	Shift + T	Shift + T	
Translate Tool	This is the shortcut for the Translate tool in Sceneplanning views.	Alt + 2	Alt + 2	
Unlock All	Unlock all.	Ctrl + Alt + Shift + L	⌘ + Alt + Shift + L	
Unlock Selection	Unlock selection.	Ctrl + Shift + K	⌘ + Shift + K	



## Timeline Keyboard Shortcuts

Command	Description	Windows/Linux	macOS	My Shortcut
Centre On Selection	This shortcut centres the timeline's layer list on the current selection.	O	O	
Clear Exposure	Clear exposure.			
Clear Exposure and Pull	The shortcut key to clear the current frames in the timeline.			
Collapse All Elements	This shortcut collapses all elements.	O	O	
Collapse or Expand an Element	This shortcut collapses or expands an element.	Ctrl + I	⌘ + I	
Convert Morphing to Drawings	Convert Morphing to Drawings			
Create Morphing	Add Morphing	Alt + M	Alt + M	
Create Scene Marker	Create a Scene Marker at the current timeline ruler selection.			
Delete Keyframe	The shortcut key to clear keyframes in the currently selected layers.	F7	F7	
Delete Morphing	Delete Morphing			
Disable All Other Elements	This shortcut disables all elements except the currently selected one.			

Command	Description	Windows/Linux	macOS	My Shortcut
Disable Layers	This shortcut disables layers.	D	D	
Enable All Elements	This shortcut enables all elements.			
Enable Layers	This shortcut enables layers.	A	A	
Enable or Disable Elements	This shortcut enables or disables elements.			
Expand All Elements	This shortcut expands all elements.	9	9	
Extend Exposure	Extend Exposure	F5	F5	
Flip Horizontal	Horizontal flip of the selected frames			
Flip Vertical	Vertical flip of the selected frames			
Go to Next Blue Frame Mark	Go to Next Blue Frame Mark			
Go to Next Cyan Frame Mark	Go to Next Cyan Frame Mark			
Go to Next Frame Mark	Go to Next Frame Mark			
Go to Next Global Frame	Go to next frame in the top scene	Ctrl + Shift + C	⌘ + Shift + C	
Go to Next Green Frame Mark	Go to Next Green Frame Mark			

Command	Description	Windows/Linux	macOS	My Shortcut
Go to Next Keyframe	Go to Next Keyframe			
Go to Next Orange Frame Mark	Go to Next Orange Frame Mark			
Go to Next Pink Frame Mark	Go to Next Pink Frame Mark			
Go to Next Purple Frame Mark	Go to Next Purple Frame Mark			
Go to Next Red Frame Mark	Go to Next Red Frame Mark			
Go to Next White Frame Mark	Go to Next White Frame Mark			
Go to Next Yellow Frame Mark	Go to Next Yellow Frame Mark			
Go to Previous Blue Frame Mark	Go to Previous Blue Frame Mark			
Go to Previous Cyan Frame Mark	Go to Previous Cyan Frame Mark			
Go to Previous Frame Mark	Go to Previous Frame Mark			
Go to Previous Global Frame	Go to previous frame in the top scene	Ctrl + Shift + X	⌘ + Shift + X	
Go to Previous Green Frame Mark	Go to Previous Green Frame Mark			
Go to Previous Keyframe	Go to Previous Keyframe	semicolon (;)	semicolon (;)	

Command	Description	Windows/Linux	macOS	My Shortcut
Go to Previous Orange Frame Mark	Go to Previous Orange Frame Mark			
Go to Previous Pink Frame Mark	Go to Previous Pink Frame Mark			
Go to Previous Purple Frame Mark	Go to Previous Purple Frame Mark			
Go to Previous Red Frame Mark	Go to Previous Red Frame Mark			
Go to Previous White Frame Mark	Go to Previous White Frame Mark			
Go to Previous Yellow Frame Mark	Go to Previous Yellow Frame Mark			
Group Selection	This shortcut creates a group from the selected layers.	Ctrl + G	⌘ + G	
Group Selection With Composite	This shortcut creates a group with an internal composite from the selected nodes.	Ctrl + Shift + G	⌘ + Shift + G	
Hide All Thumbnails	This shortcut hide thumbnails of all layers.			
Insert Blank Frame	The shortcut key to insert a blank frame in the timeline.	Shift + J	Shift + J	
Insert Camera	This shortcut adds a Camera.			

Command	Description	Windows/Linux	macOS	My Shortcut
Insert Drawing	This shortcut adds a Drawing.	Ctrl + R	⌘ + R	
Insert Group	This shortcut adds a Group.	Alt + G	Alt + G	
Insert Keyframe	This shortcut adds a Keyframe	F6	F6	
Insert Keyframe and Duplicate Drawings	This shortcut adds a Keyframe and Duplicate Drawings			
Insert Morphing Keyframe	Insert Morphing Key Frame			
Insert Parent Peg	This shortcut adds a parent Peg.	Shift + P	Shift + P	
Insert Peg	This shortcut adds a Peg.	Ctrl + P	⌘ + P	
Insert Quadmap	This shortcut adds a Quadmap.			
Insert Sound	This shortcut adds a Sound.			
Lock All	Lock all.	Ctrl + Shift + L	⌘ + Shift + L	
Lock All Others	Lock all others.	Ctrl + Alt + Shift + O	⌘ + Alt + Shift + O	
Lock Selection	Lock the selection so it cannot be selected from the Sceneplanning views.	Ctrl + Alt + L	⌘ + Alt + L	
Mark Current	Create a Scene Marker			

Command	Description	Windows/Linux	macOS	My Shortcut
Frame	at the current frame.			
Mark Frame Blue	This is the shortcut to mark a frame blue in the currently selected layers.			
Mark Frame Cyan	This is the shortcut to mark a frame cyan in the currently selected layers.			
Mark Frame Green	This is the shortcut to mark a frame green in the currently selected layers.			
Mark Frame Orange	This is the shortcut to mark a frame orange in the currently selected layers.			
Mark Frame Pink	This is the shortcut to mark a frame pink in the currently selected layers.			
Mark Frame Purple	This is the shortcut to mark a frame purple in the currently selected layers.			
Mark Frame Red	This is the shortcut to mark a frame red in the currently selected layers.			
Mark Frame White	This is the shortcut to mark a frame white in the currently selected layers.			

Command	Description	Windows/Linux	macOS	My Shortcut
Mark Frame Yellow	This is the shortcut to mark a frame yellow in the currently selected layers.			
Paste Mode: Cycle Through Presets	Cycle through paste presets			
Paste Mode: Set All	Set paste preset mode to all			
Paste Mode: Set Exposures Only	Set paste preset mode to exposure only			
Paste Mode: Set Key Frames Only	Set paste preset mode to key frames only			
Remove Frame Marker	This is the shortcut to remove a frame marker from the currently selected layers.			
Select Children	Select children.			
Set Exposure	Set Exposure			
Set Exposure to 1	Set Exposure to 1			
Set Exposure to 2	Set Exposure to 2			
Set Exposure to 3	Set Exposure to 3			
Set Motion Keyframe	Set Non Constant Keyframe	Ctrl + K	⌘ + K	
Set Stop-Motion Keyframe	Set Constant Keyframe	Ctrl + L	⌘ + L	

Command	Description	Windows/Linux	macOS	My Shortcut
Show All Thumbnails	This shortcut show thumbnails of all layers.			
Show Composite	Show composite nodes in the timeline.			
Show Effects	Show effect nodes.			
Show Group	Show group nodes in the timeline.			
Show Manager	Show Layer Display Dialog.			
Show or Hide Thumbnails	This shortcut show or hide thumbnails of a layer.	T	T	
Show Sound Columns	Show sound colums.			
Show/Hide Functions	Show/Hide functions.	Alt + F	Alt + F	
Substitute Drawing Next	This is the shortcut key to change the exposed drawing to the next one.	]	]	
Substitute Drawing Previous	This is the shortcut key to change the exposed drawing to the previous one.	[	[	
Toggle Solo Mode	Toggle Solo Mode On and Off			
Unlock All	Unlock all.	Ctrl + Alt + Shift + L	⌘ + Alt + Shift	



Command	Description	Windows/Linux	macOS	My Shortcut
			+ L	
Unlock Selection	Unlock selection.	Ctrl + Shift + K	⌘ + Shift + K	
View Mode Next	Will cycle through the Timeline view modes.			
View Mode Normal	This will set the Timeline view mode to the default one.			
View Mode Selected	This will set the Timeline to display only the selected nodes.			
View Mode Tagged	This will set the Timeline to display only the tagged nodes.			

## Node View Keyboard Shortcuts

Command	Description	Windows/Linux	macOS	My Shortcut
Cable Cutter	This shortcut toggles the cable cutting mode.			
Cable Cutter Override	This shortcut temporarily enables the cable cutter, while held.			
Centre on Selection	Shortcut key to recentre the node view on the selected node.	O	O	
Centre to Child Node	Centre node view to child node of selected node or port.	Ctrl + Down	⌘ + Down	
Centre to Parent Node	Centre node view to parent node of selected node or port.	Ctrl + Up	⌘ + Up	
Copy Qualified Name	This is the shortcut key to copy the qualified name of the selected node or waypoint	Ctrl + Q	⌘ + Q	
Create Backdrop	This shortcut adds a new backdrop to the Node View .			
Create Composite	This shortcut adds a new composite node to the Node View .	Ctrl + H	Ctrl + H	
Create Cutter	This shortcut adds a new cutter node to the Node View .			
Create Display	This shortcut adds a Display Node to the	Ctrl + Y	⌘ + Y	

Command	Description	Windows/Linux	macOS	My Shortcut
	Node View .			
Create Group	This shortcut adds a new Group Node to the Node View .	Alt + G	Alt + G	
Create Parent Peg	This shortcut adds a Parent Peg Node to the Selected Nodes in the Node View .	Ctrl + Shift + P	⌘ + Shift + P	
Create Peg	This shortcut adds a Peg Node to the Node View .	Ctrl + P	⌘ + P	
Create Read	This shortcut adds a Read Node to the Node View .	Ctrl + R	⌘ + R	
Create Waypoint	This shortcut adds a new floating, unconnected waypoint in the current group.			
Disable Node	This shortcut turns off selected nodes in the node network.	D	D	
Enable Node	This shortcut turns on selected nodes in the node network that have been disabled.	A	A	
Enter Group	This shortcut displays the contents of a Group Node.	Ctrl + Return	⌘ + Return	
Exit Group	This shortcut goes back to the previous level of the Group Node.	Ctrl + Shift + Return	⌘ + Shift + Return	

Command	Description	Windows/Linux	macOS	My Shortcut
Group	This shortcuts adds a new Group Node to the Node View , and moves the selected nodes into it.	Ctrl + G	⌘ + G	
Group with Composite	This shortcuts adds a new Group Node to the Node View , and moves the selected nodes into it.	Ctrl +Shift + G	⌘ + Shift + G	
Hide All Thumbnails	This shortcut hides the thumbnails for all nodes.	Alt + T	Alt + T	
Magnifier	This is the shortcut key to display a magnifier for the Node View .	Z	Z	
Move To Parent	This shortcut moves the selected nodes in the Group Node to the parent level, maintaining all node connections.	Ctrl + Shift + U	⌘ + Shift + U	
Rename Waypoint	This shortcut will show a dialog to rename selected waypoint.			
Show All Nodes	This is the shortcut key to show all nodes in the Node View .	Shift + comma (,)	Shift + comma (,)	
Show/Hide Navigator	Default show/hide value for the the World View in the Node View .	Ctrl + Shift + W	⌘ + Shift + W	
Show/Hide Selected Thumbnails	This shortcut shows the thumbnails for selected nodes.	T	T	

---

Command	Description	Windows/Linux	macOS	My Shortcut
Ungroup	This shortcuts explode the group and moves all nodes within onto the selected level.			

## Exposure Sheet Keyboard Shortcuts

Command	Description	Windows/Linux	macOS	My Shortcut
Add Columns	The shortcut key to display the Add Column dialog box in the Xsheet View .	Shift + C	Shift + C	
Add Drawing Column	The shortcut key to add a drawing column in the Xsheet View .	Ctrl + R	⌘ + R	
Clear Exposure and Pull	The shortcut key to clear the current frames in insert mode in the Xsheet View .			
Clear Selected Cells	The shortcut key to clear the selected cell in the Xsheet View .			
Clone Selected Columns: Drawings Only	The shortcut key to clone the drawing columns in the current selection of the Xsheet View .			
Collapse	The shortcut key to Collapse column groups in the Xsheet View .			
Collapse All	The shortcut key to Collapse all column groups in the Xsheet View .	0	0	
Delete Selected Columns	This is the shortcut key used to delete			

Command	Description	Windows/Linux	macOS	My Shortcut
	selected columns.			
Delete Selected Drawings	This is the shortcut key used to delete selected drawings.			
Duplicate Selected Columns	The shortcut key to duplicate the drawing columns in the current selection of the Xsheet View.			
Enable/Disable Playback	This is the shortcut to turn on/off the highlight of the current frame during playback in the Xsheet View.			
Expand	The shortcut key used to Expand column groups in the Xsheet View.			
Expand All	The shortcut key to Expand all column groups in the Xsheet View.	9	9	
Fill Randomly	The shortcut key to display the Random Fill dialog in the Xsheet View.			
Fill Selection	The shortcut key to display the Fill dialog in the Xsheet View.	Ctrl + T	⌘ + T	
Gestural Drag Mode	The shortcut key to enable/disable gestural editing in			

Command	Description	Windows/Linux	macOS	My Shortcut
	the Xsheet View.			
Hide Selected Column	The shortcut key to hide selected columns in the Xsheet View.	Alt + H	Alt + H	
Insert Blank Cell	The shortcut key to insert blank frames in insert mode in the Xsheet View.	Shift + J	Shift + J	
Insert Keyframe	The shortcut key to insert keyframes in the Xsheet View.	F6	F6	
Insert/Overwrite Mode	The shortcut key to switch between inserting and modifying cells in Drawings and Timing columns in the Xsheet View.	I	I	
Mark As Breakdown	Marks the selected drawings as breakdown drawings.			
Mark As In-between	Marks the selected drawings as in-between drawings.			
Mark As Key	Marks the selected drawings as key drawings.			
Merge Selected Columns	The shortcut key to merge the drawing columns in the current selection of			



Command	Description	Windows/Linux	macOS	My Shortcut
	the Xsheet View.			
Preview	The shortcut key to preview frames using Playback from the Xsheet View	Alt + P	Alt + P	
Remove Frames	This is the shortcut key used to remove selected frames.			
Sequence Fill	The shortcut key to display the Columate dialog box in the Xsheet View.	Ctrl + M	⌘ + M	
Set Custom Hold Cell	Set Custom Hold Cell			
Set Exposure to 1	Set Exposure to 1			
Set Exposure to 2	Set Exposure to 2			
Set Exposure to 3	Set Exposure to 3			
Set Exposure to 4	Set Exposure to 4			
Set Exposure to 5	Set Exposure to 5			
Set Exposure to 6	Set Exposure to 6			
Set Exposure to 7	Set Exposure to 7			
Set Exposure to 8	Set Exposure to 8			
Set Exposure to 9	Set Exposure to 9			

Command	Description	Windows/Linux	macOS	My Shortcut
Set Hold 1 Cell	Set Hold 1 Cell	Ctrl + 1	⌘ + 1	
Set Hold 2 Cells	Set Hold 2 Cells	Ctrl + 2	⌘ + 2	
Set Hold 3 Cells	Set Hold 3 Cells	Ctrl + 3	⌘ + 3	
Set Hold 4 Cells	Set Hold 4 Cells	Ctrl + 4	⌘ + 4	
Show Column Types	The shortcut key to display the Show Columns dialog in the Xsheet View			
Show Hidden Columns	The shortcut key to display the Show Column dialog box in the Xsheet View.	Alt + Shift + H	Alt + Shift + H	
Thumbnails	The shortcut key to toggle the displaying of Thumbnails in the Xsheet View			
Zoom Extents	This is the shortcut key to set the zoom level to show all contents of the Xsheet View.			

## Colour Management Keyboard Shortcuts

Command	Description	Windows/Linux	macOS	My Shortcut
Get Rights to Modify All Palettes	Shortcut key for the Get Rights to Modify All Palettes command.	Alt + L	Alt + L	
Palette Go to Next Colour	Shortcut to change the current colour to the next colour.			
Palette Go to Previous Colour	Shortcut to change the current colour to the previous colour.			
Protect Colour Value	Shortcut to toggle on/off Protect Colour on selected colour pots.			
Recolour Drawing...	Shortcut to replace current colour in drawings			

## Drawing Mode Keyboard Shortcuts

Command	Description	Windows/Linux	macOS	My Shortcut
Activate Magnifier	Activate Magnifier temporarily or toggle it permanently if pressed with ALT.			
Apply Tool to All Frames	Turn on and off the Apply to All Frames mode. When Apply to All Frames is on, some operations will apply to all frames on the selected drawing layers.	Alt + A	Alt + A	
Apply Tool to Line and Colour Art	Turn on and off the Apply to Line and Colour Art mode. When Apply to Line and Colour Art is on, some operations will apply to all art layers of the drawing.	Shift+Q	Shift+Q	
Apply to Onion Skin Range	Turn on and off the Apply to Onion Skin Range mode. When Apply to Onion Skin Range is on, some operations will apply to all the drawings visible in the onion skin.			
Apply Tool to Synced Drawing Layers	Turn on and off the Apply to Synced Drawing Layers mode. When Apply to Synced Drawing Layers is on, some operations will apply to the current			

Command	Description	Windows/Linux	macOS	My Shortcut
	drawing layer and all layers synced with that layer in the Camera View .			
Apply Tool to Visible Drawing Layers	Turn on and off the Apply to Visible Drawing Layers mode. When Apply to Visible Drawing Layers is on, some operations will apply to all visible drawing layers in the Camera View .			
Auto-Create Colour Art from Brush	Shortcut to toggle the Create Colour Art on Brush switch	Shift+F2	Shift+F2	
Automatically Fill Inside Regions	Automatically fill drawing shapes.	Ctrl + Shift + R	⌘ + Shift + R	
Auto-Matte	Generate Auto-Matte.			
Bring Forward	Bring the selected drawing element one step forward.	Ctrl + PgUp	⌘ + PgUp	
Bring To Front	Bring the selected drawing element to the front.	Ctrl + Shift + PgUp	⌘ + Shift + PgUp	
Brush Tool	Activate the Brush Tool in Brush Mode.	Alt + B	Alt + B	
Brush Tool (General)	Activate the Brush Tool.			
Centerline Editor Tool	Activate the	Alt + W	Alt + W	

Command	Description	Windows/Linux	macOS	My Shortcut
	Centerline Editor Tool.			
Change Bitmap Drawing Resolution	Change the resolution for the selected bitmap drawing(s)			
Change Vector Drawing Brush Resolution	Change the brush resolution for the selected vector drawing(s)			
Close Desk	Close the Desk in the Drawing View	Alt + J	Alt + J	
Close Gap Interactive Tool	Pops up a dialog to adjust the size of gaps to be closed all at once.	Shift+F10		
Close Gap Tool	Activate the Close Gap Tool.	Alt + C	Alt + C	
Colour Eyedropper Tool	Activate the Colour Eyedropper Tool.	Alt + D	Alt + D	
Contour Editor Tool	Activate the Contour Editor Tool.	Alt + Q	Alt + Q	
Convert Brush Strokes to Pencil Lines	Convert Brush to Pencil.	^	^	
Convert Pencil Lines to Brush Strokes	Convert Pencil Lines to Brush.	&	&	
Convert Strokes to Pencil Lines	Convert selected (invisible) strokes to pencil lines.	Shift + F12	Shift + F12	

Command	Description	Windows/Linux	macOS	My Shortcut
Convert to Bitmap Drawing	Render the selected vector drawing(s) to generate a corresponding bitmap drawing(s)			
Convert to Vector Drawing	Vectorize the selected bitmap drawing(s) to generate a corresponding vector drawing(s)			
Create Breaking Triangles	Create Breaking Triangles.			
Create Colour Art from Line Art	Line Art To Colour Art.	*	*	
Crop Brush Textures	Crop and optimize the brush textures.			
Cutter Tool	Activate the Cutter Tool.	Alt + T	Alt + T	
Cycle Through Flatten Drawing Modes	This shortcut cycles through the different drawing modes: Normal, Flatten Latest and Auto Flatten			
Decrement Brush Size	Decrement Brush Size.			
Delete All Morphing Hints	Delete All Morphing Hints	Shift + Del	Shift + Backspace	
Desk: Shift Trace Drawing Move Down	Move Shift and Trace Drawing Down. For the Desk's Shift and			

Command	Description	Windows/Linux	macOS	My Shortcut
	Trace Only.			
Desk: Shift Trace Drawing Move Up	Move Shift and Trace Drawing Up. For the Desk's Shift and Trace Only.			
Desk: Shift Trace Drawing Reset Position	Reset Shift and Trace Drawing Position. For the Desk's Shift and Trace Only.			
Desk: Shift Trace Drawing Toggle Peg State	Toggle Shift and Trace Drawing Peg State. For the Desk's Shift and Trace Only.			
Desk: Shift Trace Drawing Toggle Visibility	Toggle Shift and Trace Onion Skin Drawing Visibility. For the Desk's Shift and Trace Only.			
Desk: Shift Trace Move Tool	Shift and Trace Move Override Tool. For the Desk's Shift and Trace Only.			
Desk: Shift Trace Rotate Tool	Shift and Trace Rotate Override. For the Desk's Shift and Trace Only.			
Desk: Shift Trace Scale Tool	Shift and Trace Scale Override. For the Desk's Shift and Trace Only.			
Desk: Shift Trace Toggle Manipulator	Toggle Shift and Trace Manipulator. For the Desk's Shift			



Command	Description	Windows/Linux	macOS	My Shortcut
	and Trace Only.			
Desk: Shift Trace Toggle View	Toggle Shift and Trace Peg View . For the Desk's Shift and Trace Only.			
Draw Behind	Toggle the Draw Behind mode for the current tool.			
Drawing Pivot Tool	This is the shortcut for the pivot tool.	Shift + P	Shift + P	
Edit Texture/Gradient Tool	Activate the Edit Texture/Gradient Tool	Shift + F3	Shift + F3	
Ellipse Tool	Activate the Ellipse Tool.	Alt + =	Alt + =	
Enable Morphing Pencil Hint Mode	Pencil Hint Mode			
Eraser Tool	Activate the Eraser Tool.	Alt + E	Alt + E	
First Frame	First Frame			
Flatten	Flatten.	Alt + Shift + F	Alt + Shift + F	
Flatten and Remove Extra Strokes	Shortcut to flatten and remove the extra strokes	Ctrl + Shift + F	⌘ + Shift + F	
Flatten Latest	Shortcut to toggle the draw top layer switch			
Flip Horizontal	This is the shortcut key to flip horizontally			

Command	Description	Windows/Linux	macOS	My Shortcut
	drawing objects in Drawing mode.			
Flip Vertical	This is the shortcut key to flip vertically drawing objects in Drawing mode.			
Go to Next Morphing Frame	Go to Next Morphing Frame			
Go to Previous Morphing Frame	Go to Previous Morphing Frame			
Group	This is the shortcut key to group drawing objects in Drawing mode	Ctrl + G	⌘ + G	
Hand Tool	Activate the Hand Tool.			
Increment Brush Size	Increment Brush Size.			
Ink Tool	Activate the Ink Tool.			
Join Pencil Lines	Join Pencil Lines.	Alt + Shift + J	Alt + Shift + J	
Light Table	The shortcut key that activates the Auto Light Table command.	Shift + L	Shift + L	
Line Tool	Activate the Line Tool.	Alt + \	Alt + \	
Merge Pencil Lines	Shortcut to merge selected pencil lines into a single pencil			

Command	Description	Windows/Linux	macOS	My Shortcut
	line.			
Morphing Tool	This is the shortcut for the drawing morphing tool.	F3	F3	
Onion Skin: 1 Next	The shortcut key that activates the Next Drawing command for the onion skin.	Ctrl + 1	⌘ + 1	
Onion Skin: 1 Previous	The shortcut key that activates the Previous Drawing command for the onion skin.	!	!	
Onion Skin: 2 Next	The shortcut key that activates the Next Two Drawings command for the onion skin.	Ctrl + 2	⌘ + 2	
Onion Skin: 2 Previous	The shortcut key that activates the Previous Two Drawings command for the onion skin.	@	@	
Onion Skin: 3 Next	The shortcut key that activates the Next Three Drawings command for the onion skin.	Ctrl + 3	⌘ + 3	
Onion Skin: 3 Previous	The shortcut key that activates the Previous Three Drawings command for the onion skin.	#	#	
Onion Skin: Add 1	The shortcut key that			

Command	Description	Windows/Linux	macOS	My Shortcut
Next	activates the Add One Next Drawing command for the onion skin.			
Onion Skin: Add 1 Previous	The shortcut key that activates the Add One Previous Drawing command for the onion skin.			
Onion Skin: No Next	The shortcut key that activates the No Next Drawings command for the onion skin.	Ctrl + `	⌘ + `	
Onion Skin: No Previous	The shortcut key that activates the No Previous Drawings command for the onion skin.	~	~	
Onion Skin: Reduce 1 Next	The shortcut key that activates the Reduce One Next Drawing command for the onion skin.			
Onion Skin: Reduce 1 Previous	The shortcut key that activates the Reduce One Previous Drawing command for the onion skin.			
Optimize	Combine the selected drawing's strokes.	Ctrl + Alt + Shift + C	⌘ + Alt + Shift + C	
Paint and Remove Texture	Shortcut to toggle the Paint Over Texture switch	Shift + F6	Shift + F6	

Command	Description	Windows/Linux	macOS	My Shortcut
Paint Tool	Activate the Paint Tool.	Alt + I	Alt + I	
Paint Tool (General)	Activate the Paint Tool without changing its mode.			
Paint Unpainted Tool	Activate the Paint Tool in Paint Unpainted Mode.	Alt+Y	Alt+Y	
Pencil Editor Tool	Activate Pencil Editor Tool temporarily or permanently if pressed with ALT.	8	8	
Pencil Texture Eyedropper Tool	Activate the Pencil Texture Eyedropper Tool.			
Pencil Tool	Activate the Pencil Tool.	Alt + /	Alt + /	
Permanent Selection	Selects drawings in the specified area for all frames in the scene.	Ctrl + Shift + P	⌘ + Shift + P	
Perspective Tool	This is the shortcut for the drawing perspective tool.	Alt + 0	Alt + 0	
Polyline Tool	Activate the Polyline Tool.	Alt + _	Alt + _	
Preview Line and Colour Arts	Shortcut key to toggle Preview Mode on and off in the Drawing View. In Preview Mode, all layers of the	P	P	

Command	Description	Windows/Linux	macOS	My Shortcut
	drawing are visible; only the active layer (Line Art or Colour Art) is visible when Preview Mode is off.			
Rectangle Tool	Activate the Rectangle Tool.	Alt + 7	Alt + 7	
Reduce Drawing Texture Resolution	Reduce drawing texture resolution.			
Remove Dirt	Shortcut to call the remove dirt function	Shift + D	Shift + D	
Remove Hair	Pops a dialog to adjust the length of hair to be removed.			
Remove Selected Drawing	Removes the selected drawing from the thumbnails side panel.			
Remove Art Inside Selection	Removes art inside selection on current drawing			
Remove Art Inside Selection on All Drawings	Removes art inside selection on all drawings			
Removes Art Outside Selection	Removes art outside selection on current drawing			
Removes Art Outside Selection on All Drawings	Removes art outside selection on all drawings			

Command	Description	Windows/Linux	macOS	My Shortcut
Repaint Brush Tool	Activate the Brush Tool in Repaint Mode.	Alt + X	Alt + X	
Repaint Tool	Activate the Paint Tool in Repaint Mode.	Alt + R	Alt + R	
Reposition All Drawings Tool	Activate the Reposition All Drawings Tool.			
Resize Pencil Style Tool	This is the shortcut for the tool to resize pencil.	O	O	
Rotate 180	Rotate the drawing 180 degrees.			
Rotate 90 CCW	Rotate the drawing 90 degrees counterclockwise.	Ctrl + 7	⌘ + 7	
Rotate 90 CW	Rotate the drawing 90 degrees clockwise.	Ctrl + 9	⌘ + 9	
Rotate View Tool	Activate the Rotate View Tool.			
Select Delete Morphing Hint Mode	Select Delete Morphing Hint Mode	DeleteDel	Backspace	
Select Morphing Appearing Point Mode	Appearing Point Mode			
Select Morphing Contour Hint Mode	Contour Hint Mode	F7	F7	
Select Morphing Vanishing Point Mode	Vanishing Point Mode	F10	F10	

Command	Description	Windows/Linux	macOS	My Shortcut
Select Morphing Zone Hint Mode	Zone Hint Mode			
Select Strokes with Current Colour	This is the shortcut key to select all drawing objects in the active layer(s) of a drawing that are coloured with the current colour.	Ctrl + Shift + A	⌘ + Shift + A	
Select Strokes with Current Pencil Texture	This is the shortcut key to select all drawing objects in the active layer(s) of a drawing that use the current pencil texture.			
Select Tool	Activate the Select Tool.	Alt + S	Alt + S	
Send Backward	Send the selected drawing element one step backward.	Ctrl + PgDown	⌘ + PgDown	
Send to Back	Send the selected drawing element to the back.	Ctrl + Shift + PgDown	⌘ + Shift + PgDown	
Show Grid	Show/hide the Drawing View grid by default.	Ctrl + '	⌘ + '	
Show Grid Outline Only	Toggle between the display of the drawing view grid in outline or full field chart mode.			
Show Other Morphing Key	Shortcut to toggle the display of other	Ctrl + Shift + M	⌘ + Shift + M	



Command	Description	Windows/Linux	macOS	My Shortcut
Drawing	drawing of a morphing sequence in a thumbnail			
Show Scan Info Panel	Show/hide the panel that display the scan info for the selected drawing in the drawing view .			
Show Strokes	Shortcut key to the Show Strokes command.	K	K	
Show Symbol Pivot	Show/hide the Current Symbol Pivot.			
Show/Hide Contour Editor Controls	Show/Hide Rotation and Scale Controls	Alt+F5	Alt+F5	
Show/Hide Onion Skin	Toggles on and off the onion skin.	Alt + O	Alt + O	
Smooth	Smooth.	Alt + Shift + S	Alt + Shift + S	
Smooth Editor Tool	Activate the Smooth Editor Tool.			
Snap and Align	Use drawing bounding boxes for snapping and alignment.	Ctrl + Alt + ,	⌘ +Alt + ,	
Snap to Contour	Use drawing contours for snapping.	Ctrl + Alt + ;	⌘ +Alt + ;	
Snap to Grid	Snap drawings to the grid.	Ctrl + Alt + '	⌘ + Alt + '	

Command	Description	Windows/Linux	macOS	My Shortcut
Split Pencil Line	Split Pencil Line.	Alt+Shift+K	Alt+Shift+K	
Stamp Tool	Activate the Stamp tool.			
Stroke Tool	Activate the Stroke Tool.	Alt + V	Alt + V	
Suggest Morphing Hints	Suggest Hints			
Switch to Line Art/Colour Art	Shortcut key to toggle between Line Art and Colour Art in a drawing.	L	L	
Switch to Overlay/Underlay Layer	Shortcut key to toggle between overlay and underlay layer in a drawing.	colon (:)	colon (:)	
Text Tool	Activate the Text Tool.	Alt + 9	Alt + 9	
Toggle Backlight	Shortcut key to turn the Backlight on and off in the Drawing View.	Alt + Shift + B	Alt + Shift + B	
Toggle Line Building Mode	Turn on and off the Pencil Tool Line Building Mode. This mode allows to append new pencil strokes to existing one when drawing with the Pencil Tool and Line Tool.			
Toggle Morphing Key	Show/Toggle	F4	F4	

Command	Description	Windows/Linux	macOS	My Shortcut
Drawings	Drawing			
Toggle Protect Colours	Turn on and off the Respect Sticky Colours option. When Respect Sticky Colours is on, you cannot change the colour of objects painted with sticky colours.	Shift + S	Shift + S	
Toggle stabilizer on/off	Toggle the pen stabilizer on and off			
Ungroup	This is the shortcut key to ungroup drawing objects in Drawing mode	Ctrl + Shift + G	⌘ + Shift + G	
Unpaint Tool	Activate the Paint Tool in Unpaint Mode.	Alt + U	Alt + U	
Zoom Tool	Activate Zoom Tool temporarily or permanently if pressed with ALT.	Alt + Z	Alt + Z	

## Function Editor Keyboard Shortcuts

Command	Description	Windows/Linux	macOS	My Shortcut
Insert Point	In Function Editors, the shortcut key to insert a point.	I	I	
Lock/Unlock Point	In Function Editors, this shortcut key locks control points to a frame number or unlocks a key frame.			
Select Left Handle	This is the shortcut to select the left handle of a selected keyframe.	[	[	
Select Next Keyframe	This is the shortcut to select the next keyframe.	,	,	
Select Prev Keyframe	This is the shortcut to select the previous keyframe.	semicolon (;)	semicolon (;)	
Select Right Handle	This is the shortcut to select the right handle of a selected keyframe.	]	]	
Toggle Grid	In Function Editors, the shortcut key to display grid.	G	G	
Toggle Stop-Motion Segment	Shortcut key to toggle the Constant Segment attribute of a function keypoint. In a 3D path, to hold on a position for a while, then jump to another position, set the corresponding segment constant in its velocity curve.	S	S	

Command	Description	Windows/Linux	macOS	My Shortcut
Zoom In X	In Function Editors, the shortcut key to zoom in the X axis.	4	4	
Zoom In Y	In Function Editors, the shortcut key to zoom in the Y axis.	6	6	
Zoom Out X	In Function Editors, the shortcut key to zoom out in the X axis.	3	3	
Zoom Out Y	In Function Editors, the shortcut key to zoom out the Y axis.	5	5	

## Library Keyboard Shortcuts

Command	Description	Windows/Linux	macOS	My Shortcut
Details	Shortcut key to turn on the detail view			
List	Shortcut key to turn on the list view .			
Refresh	Shortcut key that reloads the list of contents in the Library.	F5	F5	
Rename	Shortcut key that renames a library folder or template.			
Thumbnails	Shortcut key to turn on the thumbnail view .			

## Tagging Keyboard Shortcuts

Command	Description	Windows/Linux	macOS	My Shortcut
Tag Selection	This is the shortcut key to tag the selection.			
Untag All	This is the shortcut key to untag all nodes.			
Untag All Others	This is the shortcut key to untag all nodes except the selection.			
Untag Selection	This is the shortcut key to untag the selection.			

## Tool Presets Keyboard Shortcuts

Command	Description	Windows/Linux	macOS	My Shortcut
Tool Preset Shortcut #01	Tool Preset Shortcut 1.			
Tool Preset Shortcut #02	Tool Preset Shortcut 2.			
Tool Preset Shortcut #03	Tool Preset Shortcut 3.			
Tool Preset Shortcut #04	Tool Preset Shortcut 4.			
Tool Preset Shortcut #05	Tool Preset Shortcut 5.			
Tool Preset Shortcut #06	Tool Preset Shortcut 6.			
Tool Preset Shortcut #07	Tool Preset Shortcut 7.			
Tool Preset Shortcut #08	Tool Preset Shortcut 8.			
Tool Preset Shortcut #09	Tool Preset Shortcut 9.			
Tool Preset Shortcut #10	Tool Preset Shortcut 10.			



## 3D Graph Keyboard Shortcuts

Command	Description	Windows/Linux	macOS	My Shortcut
Add 3D Kinematic Output	Add a 3D Kinematic Output under the selected node and set its filter to the selected subnode key. The name added 3D Kinematic Output will be the name of the selected subnode plus "-Output" appended to it.			
Collapse All Elements	Collapse all branches.	0	0	
Collapse Selection	Collapse selected branches.			
Disable Subnode	Disables the visibility of a selection of node(s).			
Enable Subnode	Enables the visibility of a selection of node(s).			
Expand All Elements	Expand all branches.	9	9	
Expand Selection	Expand selected branches.			
Make Properties Available	Create transformation attributes for a subnode that didn't have any transformation before. It automatically creates a corresponding subnode layer under the selected node layer in the timeline.			
Select Child Subnodes	The current selection will move to its first subnode child.			

Command	Description	Windows/Linux	macOS	My Shortcut
Select Next Sibling Subnode	The current selection will go to the next sibling subnode on the same level and under the same parent subnode.			
Select Parent Subnode	The current selection will move to its subnode parent.			
Select Previous Sibling Subnode	The current selection will go to the previous sibling subnode on the same level and under the same parent subnode.			

## Shift and Trace Keyboard Shortcuts



### NOTE

These keyboard shortcuts work with the Shift and Trace tool which can be used in the Camera view, not the Shift and Trace functionality of the desk in the Drawing view.

Command	Description	Windows/Linux	macOS	My Shortcut
Reset Shift and Trace of All Drawings	Reset the shift and trace position of all drawings on the current drawing layer.			
Reset Shift and Trace of Selected Drawings	Reset the shift and trace position of the selected drawings.			
Shift and Trace Tool	Use the Shift and Trace Tool to change the position of drawings in the Camera View when Shift and Trace is enabled. If you assign 'Alt + a shortcut key', you can temporarily override the current tool by using the shortcut key without the Alt modifier. Using Alt + key will activate the Shift and Trace tool.			
Shift and Trace Rotate	Use this shortcut to temporarily override from any tool to the Rotate mode of the Shift and Trace tool.			
Shift and Trace Scale	Use this shortcut to temporarily override from any tool to the Scale mode of the Shift and Trace tool.			

## Deformation Keyboard Shortcuts

Command	Description	Windows/Linux	macOS	My Shortcut
Add Articulation Node	Add Articulation Node.			
Add Bone Node	Add Bone Node.			
Add Curve Node	Add Curve Node.			
Add Game Bone Node	Add Game Bone Node.			
Add Offset Node	Add Offset Node.			
Add Stick Node	Add Stick Node.			
Convert Elliptic ROI to Shape	Convert Elliptic Zones of Influence to Shaped Region of Influence.			
Convert to New Drawing and Add Deformation Chain	Convert Drawing to a New Drawing and Add a Deformation Chain.			
Remove All Key Frames	Remove all the key frames of the selected deformation chain.			
Show Current Deformers	Show the Selected Deformation Chain and Hide All Others			
Show Selected Deformers	Shows the controls of the selected drawing's deformation chain.			

---

Command	Description	Windows/Linux	macOS	My Shortcut
Unset Local Flag	Uncheck the Selected Nodes Local Flag.			
Unset Local Flag	Copy the curve point position to the parent offset.			

## Envelope Creator Keyboard Shortcuts

Command	Description	Windows/Linux	macOS	My Shortcut
Create Envelope	Envelope Creator			
Create Envelope...	Show Envelope Creator Options			

## Exposure Fill Keyboard Shortcuts

Command	Description	Windows/Linux	macOS	My Shortcut
Using Render Changes	Fill the Exposure Based on Rendering Changes.			

## Gaming Keyboard Shortcuts

Command	Description	Windows/Linux	macOS	My Shortcut
Select Group #01	Select Group 01			
Select Group #02	Select Group 02			
Select Group #03	Select Group 03			
Select Group #04	Select Group 04			
Select Group #05	Select Group 05			
Select Group #06	Select Group 06			
Select Group #07	Select Group 07			
Select Group #08	Select Group 08			
Select Group #09	Select Group 09			
Select Group #10	Select Group 10			



## Guides Keyboard Shortcuts

Command	Description	Windows/Linux	macOS	My Shortcut
Align with Guide	When enabled, drawing tools will draw aligned with guides			
Enable Guide	Enable guide for assistive drawing	Shift + G	Shift + G	
Enable Guide with Eraser	When enabled, guide remains effective with eraser			
Full Cursor Display	When enabled, lines from the mouse cursor will extend to the edge of the drawing area			
Lock Guide	When enabled, guides are locked in position and cannot be modified			
Show Reference Lines	Display additional lines used as visual reference for the guide			

## Animated Matte Generator Keyboard Shortcuts

Command	Description	Windows/Linux	macOS	My Shortcut
Add Matte Point Mode	Enable the Add Matte Point mode in which it is possible to add new control points on the matte contour.			
Align Matte Handles	Make the handle angles identical on each side of the matte control points.			
Contract Selected Inner Matte Points	Move the selected inner matte points towards the matte's pivot.			
Contract Selected Outer Matte Points	Move the selected outer matte points towards the matte's pivot.			
Define Matte Point Mode	Enable the Define Matte Point Mode in which it is possible to modify the matte control points.			
Delete Matte Point Animation	Remove selected matte point keyframes.			
Delete Selected Matte Point	Delete selected matte points.			
Delete Unused Matte Generator Attributes	Remove unused attributes of the Animated Matte Generator node.			
Drag Matte Inner Contour Only	Drag only the control points of the matte inner contour. This action works in Define Matte Point and Setup			

Command	Description	Windows/Linux	macOS	My Shortcut
	Snapping modes.			
Drag Matte Outer Contour Only	Drag only the control points of the matte outer contour. This action works in Define Matte Point and Setup Snapping modes.			
Expand Selected Inner Matte Points	Move the selected inner matte points away from the matte's pivot.			
Expand Selected Outer Matte Points	Move the selected outer matte points away from the matte's pivot.			
Make Selected Matte Points Animatable	Create the attributes of the selected matte control points in the Timeline view without adding a keyframe.			
Merge Inner and Outer Matte Contours	Merge selected matte control points of inner and outer contour.			
Set to Snap Mode	Enable the Set to Snap Mode in which it is possible to define the snapping of each matte control points and contour.			
Shorten Matte Handles	Shorten matte handles by 30%.			
Toggle Auto Key on All Points	Toggle Auto Key on All Points setting.			

Command	Description	Windows/Linux	macOS	My Shortcut
Toggle Fix Adjacent Keyframes	Toggle Fix Adjacent Keyframes setting.			
Toggle Show Matte Inner Contour	Toggle the visibility of the matte inner contour.			
Toggle Show Matte Outer Contour	Toggle the visibility of the matte outer contour.			
Toggle Show Matte Point Id	Toggle the visibility of the matte control points id.			
Toggle Show Scaling Controls	Toggle the visibility of the scaling controls.			

## Particle Keyboard Shortcuts

Command	Description	Windows/Linux	macOS	My Shortcut
Show Particles as Dots	Show Particles as Dots in Camera View.			

## Timesheet Keyboard Shortcuts

The following keyboard shortcuts are useful if you are working in a traditional Japanese animation pipeline. They use functionalities specific to the *Timesheet*, a special mode of the Xsheet view when using Harmony in Japanese.

Command	Description	Windows/Linux	macOS	My Shortcut
Add Camera Column	Adds a Camera column.			
Add Camera Fairing	Adds a wiggle line marker in the Camera column for Fairing.			
Add Camera Pan	Adds a straight line marker in the Camera column for Pan.			
Add Camera Point	Adds a marker in the Camera column for a customized camera position.			
Add Camera Point A	Adds a marker in the Camera column for the A camera position.			
Add Camera Point B	Adds a marker in the Camera column for the B camera position.			
Add Camera Point C	Adds a marker in the Camera column for the C camera position.			
Add Slide Marker A	Adds an A marker in the Camera column for layer slides or movements.			
Add Slide Marker E	Adds an A marker in the Camera column for layer slides or movements.			

Command	Description	Windows/Linux	macOS	My Shortcut
Add Slide Marker I	Adds an A marker in the Camera column for layer slides or movements.			
Add Slide Marker O	Adds an A marker in the Camera column for layer slides or movements.			
Add Slide Marker U	Adds an A marker in the Camera column for layer slides or movements.			
Add Sound Column	Adds a sound column named S.			
Clear Inbetween Markers	Clears the cell marker Inbetween, Reverse Inbetween or Reverse Reference.			
Export Timesheet to PDF	Exports the Timesheet information to a PDF file.			
Generate Cell Columns	Generates new columns from the selected columns, renames the drawing in ascending order and replaces inbetween markers with drawings.			
Mark as Breakdown	Marks the selected cell as a breakdown.			
Mark as Inbetween	Marks the selected cell as an inbetween.			
Mark as Key	Marks the selected cell as a key drawing.			

Command	Description	Windows/Linux	macOS	My Shortcut
Mark as Reverse Inbetween	Marks the selected cell as a reverse inbetween.			



## Mini Playback Keyboard Shortcuts

Command	Description	Windows/Linux	macOS	My Shortcut
Mini Playback	Starts the mini playback			
Mini Playback Dialog	Opens the mini playback dialog			

## Node Caching Keyboard Shortcuts

Command	Description	Windows/Linux	macOS	My Shortcut
Always Playback with Cached Previews	Always display cached previews during playback			
Disable Preview Cache when selecting nodes	<p>When active, selecting a node in the Node or Timeline views will disable cache previews for the selection.</p> <p>When inactive, nodes selected through the Node or Timeline views will still be displayed using their cached previews.</p> <p>This has no impact on selection made through the Camera View</p>			
OpenGL Node Caching	Toggles the OpenGL Node Caching			
Show cached preview	Reset all the nodes and display their cached preview if any			
Toggle Node's Cache	Toggle the Cache attribute for the Selected Nodes			