

Producer 21

Toon Boom Producer 21 Release Notes

TOON BOOM ANIMATION INC.
4200 Saint-Laurent, Suite 1020
Montreal, Quebec, Canada
H2W 2R2

+1 514 278 8666
contact@toonboom.com
toonboom.com

Legal Notices

Toon Boom Animation Inc.
4200 Saint-Laurent, Suite 1020
Montreal, Quebec, Canada
H2W 2R2

Tel: +1 514 278 8666

Fax: +1 514 278 2666

toonboom.com

Disclaimer

The content of this document is the property of Toon Boom Animation Inc. and is copyrighted. Any reproduction in whole or in part is strictly prohibited.

The content of this document is covered by a specific limited warranty and exclusions and limit of liability under the applicable License Agreement as supplemented by the special terms and conditions for Adobe®Flash® File Format (SWF). For details, refer to the License Agreement and to those special terms and conditions.

Some icons in this document were provided with Font Awesome Free 5.6.1 by Font Awesome. These icons are provided under the CC BY 4.0 license. For more information on Font Awesome, visit <https://fontawesome.com>. For information on the license of Font Awesome Free, see <https://fontawesome.com/license/free>.

Some icons in this document were provided with the Glyphicons Halflings font by Glyphicons. For more information on Glyphicons, visit <https://www.glyphicons.com/>.

Trademarks

Toon Boom® is a registered trademark. Producer™ and the Toon Boom logo are trademarks of Toon Boom Animation Inc. All other trademarks of the property of their respective owners.

Publication Date

03-07-2022

Copyright © 2022 Toon Boom Animation Inc., a Corus Entertainment Inc. company. All rights reserved.

Contents

Contents	3
Producer 21.2 Release Notes	4
Workflow Editor	7
Producer 21.1 Release Notes	9
Producer 21 Release Notes	12

Producer 21.2 Release Notes

Here is the list of changes for Producer 21.2

- [Workload Manager \(BETA\)](#) on page 4
- [Other Reports Improvements](#) on page 5
- [General Improvements](#) on page 7
- [What's Fixed](#) on page 8

Workload Manager (BETA)

This new report will help supervisors analyze and take action to better balance workload amongst the team(s) on any given project:

- Visualize the workload per user or per task, explore the detailed assignment panel to evaluate actions to take.

Report Data						
	1	2	3	4	5	
1	KEY ASSIGNEE ⌵ ⚙	PROCESS GROUP ⚙	PROCESS ⌵ ⚙	STATUS ⚙		
2	JOB ⚙	▼ Anim				
3	SCENE ⚙		▶ Anim	▶ Anim_Check	▶ Anim_App	
4	▶ Carina Allen	21	21	21	21	
5	▶ Charlie Simmons	4	4	4	4	
6	▶ Frank Banner	6	6	6	6	
7	▶ Nathan Wong	11	11	11	11	

- Easily reassign tasks in realtime from the report's interface.

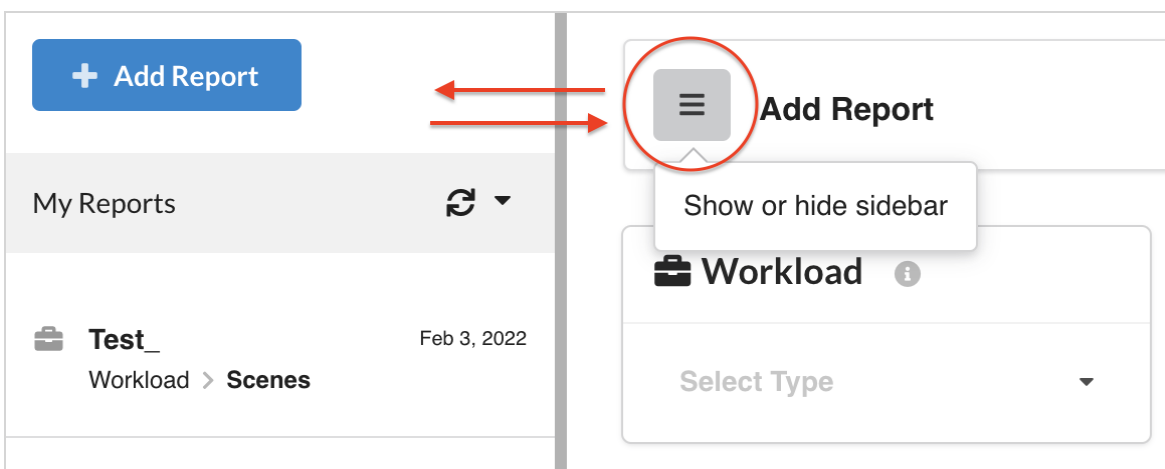
Reassign Selection

Reassign to: **Reassign** Cancel Changes Apply Changes

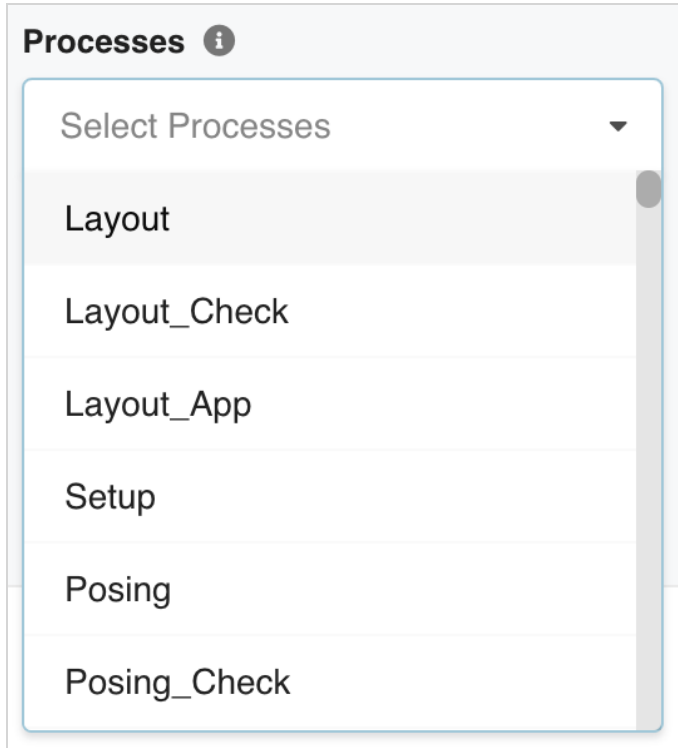
Assignee	Environment	Job	Scene	#Frames	Actual Draw...	Planned Dra...	Process
Carina Allen	Looking Real	EP_001	sc_001	48	34	34	Anim
Carina Allen	Looking Real	EP_001	sc_002	120	24	23	Anim
Carina Allen	Looking Real	EP_001	sc_003	60	72	65	Anim
Carina Allen	Looking Real	EP_001	sc_004	145	14	12	Anim
Carina Allen	Looking Real	EP_001	sc_005	69	8	8	Anim
Carina Allen	Looking Real	EP_001	sc_006	230	23	22	Anim
Carina Allen	Looking Real	EP_001	sc_012	134	15	13	Anim

Other Reports Improvements

- The report interface has been optimized with a collapsible side panel creating a clean layout.

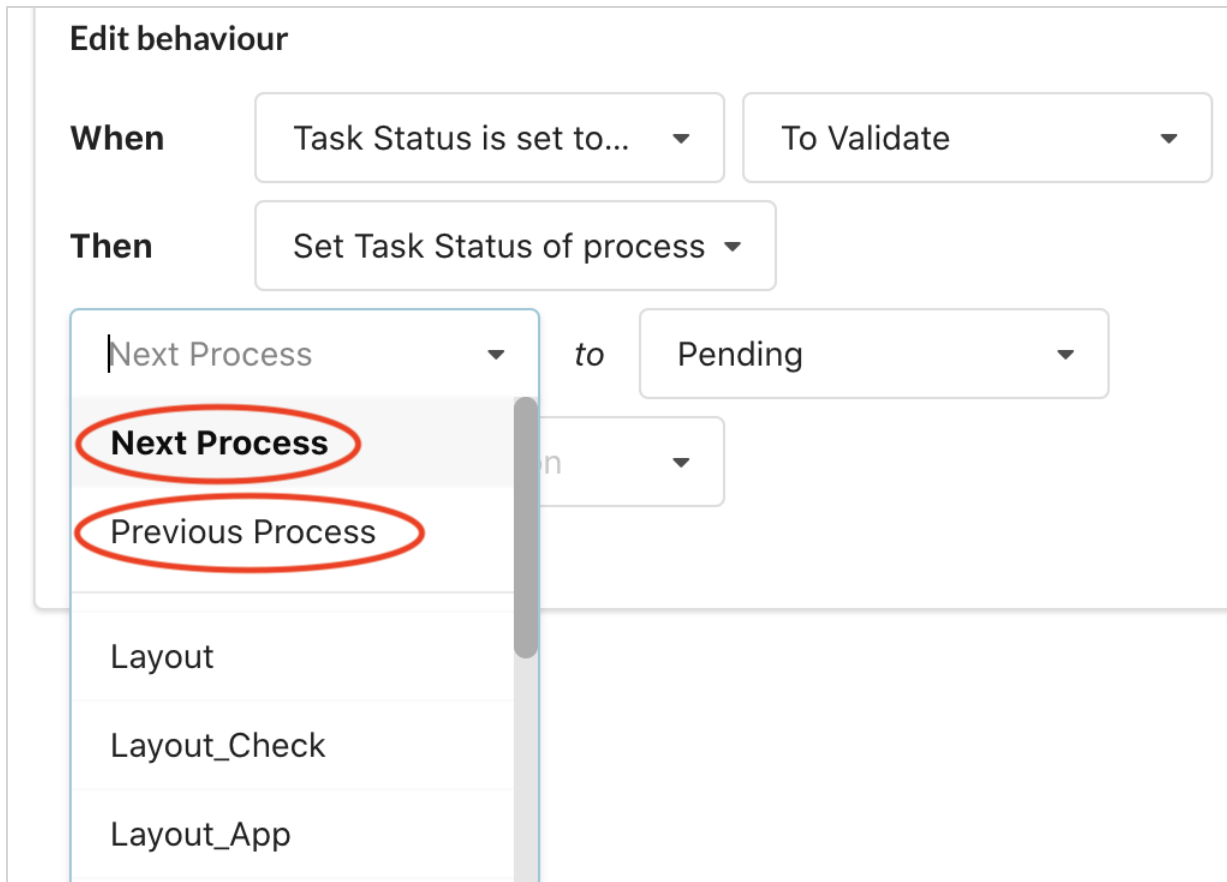


- We have made improvements to the default process and status ordering to better reflect your given workflows.



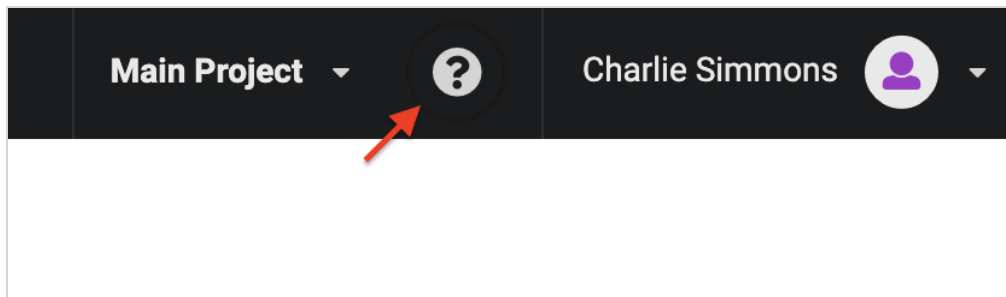
Workflow Editor

- A new workflow behaviour can be configured using the versatile actions “Next Process” and “Previous Process”.



General Improvements

- The Producer web documentation link was moved to the main menu for better accessibility.



What's Fixed

- Fixed an issue where the reports process list would not display anything with only one environment selected.
- Fixed an issue where uploading the same file repeatedly would result in an empty preview.
- Fixed an issue for task status workflows where the save/cancel buttons remained active after saving.
- Fixed erroneous warning message when setting multiple unique behaviours on the same process.
- Fixed a layout issue where the reports search criteria fields would spill out of their container.
- Fixed a field styling issue for shared reports where the assignee box was too thin.
- Fixed a task reporting issue where it would not report the initial task creation status (typically "Standby").
- Adjusted the status text colour to contrast on a darker backdrop.
- Status labels will correctly appear when configuring behaviours.
- Fixed an issue where empty status labels were displayed in the reports.
- Fixed search criteria issue for asset reports where jobs were not properly filtered.
- Fixed an issue with asset assembly filtering under Open Tasks.
- Removing an environment from the report search criteria will now also clear the selected jobs of that environment.
- Fixed an issue when filtering processes in a Job Task report.

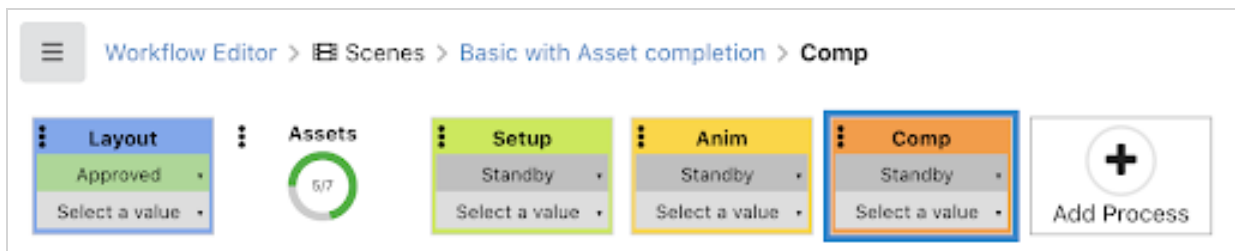
Producer 21.1 Release Notes

Here is the list of changes in Producer 21.1.

- [New Workflow Editor \(BETA\)](#) on page 9
- [Improvements](#) on page 10
 - [New Preview Carousel in the Focus View](#) on page 10
 - [Improvements to the Review Process](#) on page 10
 - [Reports Page Improvements](#) on page 10
- [Fixed Issues](#) on page 10

New Workflow Editor (BETA)

- Improved workflow visualization and configuration.
- Workflow Behaviour management has been streamlined.



With this release, we introduce a brand New Beta Workflow Editor. With its modern interface, the new editor delivers the following:

- Creating a workflow is quick and easy; users can create workflows autonomously
- Tasks Behaviours (previously known as triggers) are easy to visualize and to set up.
- Visualize the final look of your interactive workflow as you are building it.
- Duplicating processes, behaviours or entire workflows is child's play.

If you are a current Producer user, and you have created workflows in Producer versions prior to Producer 21.1 - yes, they are compatible in the latest release. Both the current workflow editor and the New Beta Workflow Editor are accessible in Producer 21.1. We are eager for you to give the new workflow editor a try and provide us with your feedback.

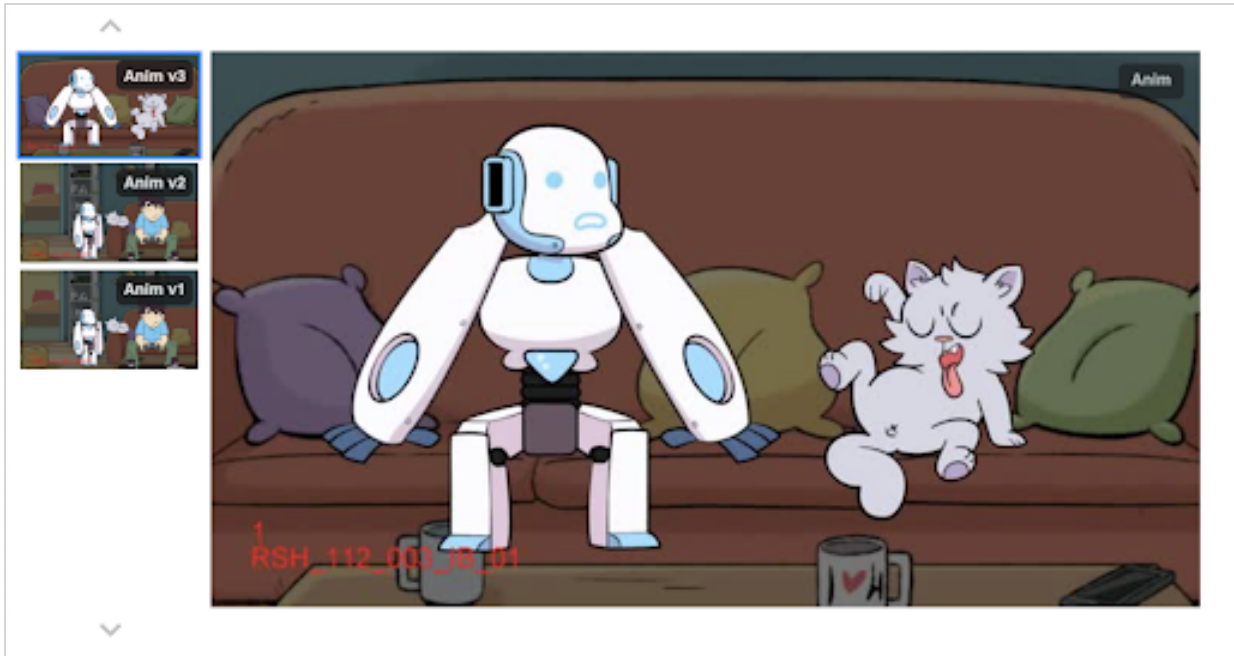
New to Producer? We are excited that you are considering the latest version of our animation production tracking software. We want to hear from you as well! Is the New Beta Workflow Editor as user friendly as you were expecting?

Contact us with your feedback - producer2beta@toonboom.com

Improvements

New Preview Carousel in the Focus View

- Added a carousel style preview to the focus view, making it very easy to browse through every Preview version.



Improvements to the Review Process

- Added permission to control what review sessions an external reviewer can see when accessing the review page.

Reports Page Improvements

- Added a Job search criteria to the reports.

Fixed Issues

- Fixed an issue when a process name ended with an extra space character.
- Fixed an issue with the overview processes displaying out of order.
- Standardized the completion values into integer numbers.
- Fixed a display refresh issue when updating the priority in the Focus View.
- Fixed an upload issue in Producer Link when scene names contain a special character.
- Producer Link error notification can now be dismissed properly.

- The button to "Clear All Filters" will now also clear "Custom Fields" from the search criteria.
- Fixed a username pattern issue that would prevent opening review sessions.

Producer 21 Release Notes

Here is the list of changes in Producer 21.

- [Tracking Page Improvements](#) on page 12
- [Open Tasks Improvements](#) on page 12
- [Review Tool / Review List UX Improvements](#) on page 12
- [Assets Page Improvements](#) on page 13
- [CSV Import Improvements](#) on page 13
- [Reports Page Improvements](#) on page 13
- [Fixed Issues](#) on page 13

Tracking Page Improvements

- Tasks status and Assignee modifications are updated in real-time.
- Take and retake count has been made more flexible via triggers.
- Ability to filter task status updates based on date.
- Improved feedback when editing tasks.
- Ability to edit tasks on multiple selections when displaying scenes of a job.
- Ability to order and group notes by Time/Date they were created, in addition to grouping them by Author/Date or tags.
- Updated “Submit to Review” button text for clarity.
- Ability to edit priorities inline for multiple items at once.
- New option to display latest preview for the current process or latest uploaded preview, regardless of process.
- Added a “Scene Focus” view to see all the details of a scene on one page.

Open Tasks Improvements

- A “Tiles” view layout was added to the “Open Tasks” page as an alternative to the “List” view layout.
- New summary panel was added to the “Open Tasks” page with a status overview of your tasks.

Review Tool / Review List UX Improvements

- Added multiple line thickness options for drawing annotations.
 - The line thickness of drawing annotations can be set to 1,2,4,5 or 7 pixels.
- Updated “Submission List” button icon/graphic.

- Lightbox option to add a white overlay with opacity for drawing annotations.
- Revision type options (Artistic and Technical) have been simplified, set and forget.
- Ability to hold shift and draw a perfect circle.
- New fixed top-left panel control (Review list, Scene list).
- Removed the white border.
- Clear text contrast when editing notes.
- Controls are now located under the video.
- The review page layout is automatically saved.
- Movie files are now optimized during upload for better playback experience.
- Added permission to edit all review notes, not only moderated notes.

Assets Page Improvements

- Improved navigation in Asset Manage based on environments and jobs.
 - Added ability to exclude environment assets when filtering for jobs. The environment and job filters have been moved directly on top of the Assets page.
- Ability to create multiple assets at once and link them to the same environment or job.
 - Assets can now be created in bulk and associated with the same environment(s) or job(s) from the “Create Assets” dialog.
- New interface to manage the Asset types and categories.

CSV Import Improvements

- Provide Note tag information
- Assign Assets to Scenes
- Import Notes with images

Reports Page Improvements

- Added ability to share reports.
 - Each user can now create and share reports with other users, groups or everyone.

Fixed Issues

- Labels in the status filter
- Duplicated tasks upon creation
- Stitching issue with local and batch renders

- Playback issue in Review tool where it would skip scenes
- Notes not displaying for all processes in Open Task page
- Display issue with Assets in bottom panel of Open Tasks
- Enabling/disabling external, locked and closed reviews
- Playback issue in Review tool with mono and stereo audio tracks
- Frame navigation issue in the Review tool
- Width of navigation boxes to accommodate long names
- Erroneous report data and chart when switching report type
- Error message when adding a retired item to a review session
- Review tool issue when uploading large note attachment files
- Fixed a syntax error in `TB_WebCC_Snapshot.js` using render queue uploads
- Error message when opening an external Asset with an invalid path
- Looping option issue in the Review tool
- Sound drifting issue in Review tool
- An issue in “Open Tasks” where the search panel would not display any process or status.
- Error when fetching completion percentage data in "All Scenes" mode.
- Performance issue when uploading Note attachments in the Review tool.
- Added missing Asset name field in the reports.
- An issue when importing movie files from Storyboard Pro.
- Custom fields issue that would not display in “Open Tasks”.
- Assets priority that would not display in “Open Tasks”.
- Eraser performance in Review tool.
- Exporting a CSV for 300+ selections.
- Saving layout options in the Review tool.
- An issue when trying to open a retired review session.
- Naming a progress node "Assets".
- Playhead position when selecting scenes in the Review tool.
- An issue when deleting “Views”
- Retired users should not be able to log in

- Displaying the processes and statuses when filtering under “Open Tasks”
- Editing a job “Custom Field”
- Display issue with metadata column
- Take/retake trigger where initial count was ignored